

# Pipe Flashing



## Application

Waterproofing pipe penetrations of a roof, such as plumbing vent pipes and electrical service mast pipes.

## Features and Benefits

- Pipe opening can be easily customized on job site utilizing clearly marked pipe diameters on each flashing
- EPDM and Silicone are both flexible materials, resistant to ultraviolet rays, cracking or weathering
- Available in EPDM black or gray and silicone red
- The aluminum base is corrosion resistant and conforms easily to any panel configuration or roof pitch
- Retrofit flashing is available for piping with welded caps or cross bars
- Colors available in standard square and round base pipe flashing

## Product Selection - Square Base

Material No.			Size	Pipe Size	Base Size	Top	Carton Wt.	Carton Qty.
Black EPDM	Gray EPDM	Red Silicone						
500364	1304853	500367	#1	1/4" – 2 -3/4"	4-1/2"	Closed	3	15
500391	1304992	500396	#2	7/8" – 4"	6"		5	15
500401	500406	500412	#3	1/4" – 5-3/4"	8"	Closed	7	15
500417	1305010	500419	#4	2-3/4" – 7"	10"		8	10
500423	1305019	500424	#5	4" – 8-1/4"	11"		10	10
500428	1305024	500429	#6	4-3/4" – 10"	12"		12	10
500433	1305031	500434	#7	5-1/2" – 11-1/2"	14"		16	10
500438	1305034	500439	#8	6-3/4" – 13-1/2"	17"		12	5
500443	1305040	500444	#9	8" – 20-1/2"	25"		19	5
500369	1304856	500370	#10	12" – 28-1/2"	34"		26	5



## Product Selection - Round Base

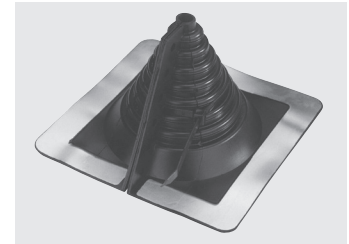
Material No.			Size	Pipe Size	Base Size	Top	Carton Wt.	Carton Qty.
Black EPDM	Gray EPDM	Red Silicone						
500361	500362	500363	#1	1/4" – 2-1/2"	4-3/4"	Closed	3	15
500388	500389	500390	#2	1-3/4" – 3"	6-1/4"		5	15
500398	500399	500400	#3	1/4" – 5"	7-3/4"	Closed	7	15
500414	500415	500416	#4	3" – 6-1/4"	9-1/4"		8	10
500420	500421	500422	#5	4-1/4" – 7-3/4"	10-1/2"		10	10
500425	500426	500427	#6	5" – 9"	13"		12	10
500430	500431	500432	#7	6" – 11"	14-1/2"		15	10
500435	500436	500437	#8	7" – 13"	16-1/2"		13	5
500440	500441	500442	#9	9" – 19"	25-1/4"		22	5



# Pipe Flashing

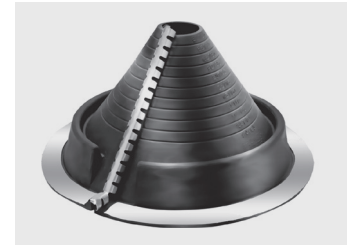
## Product Selection - Retrofit Square Base

Material No.			Size	Pipe Size	Base Size	Carton Wt.	Carton Qty.
Black EPDM	Gray EPDM	Red Silicone					
500365	500366	500368	#1	1/2" – 4"	8-3/16"	4	5
1204123	500395	500397	#2	4" – 9-1/4"	14-1/4"	11	5
500410	500411	500413	#3	9-1/4" – 16-1/4"	21-1/2"	19	5



## Product Selection - Retrofit Round Base

Material No.			Size	Pipe Size	Base Size	Carton Wt.	Carton Qty.
Black EPDM	Gray EPDM	Red Silicone					
1304849	1304850	1304855	#1	3/4" – 2-3/4"	6-1/4"	4	5
1304990	1304991	1304994	#2	2" – 7-1/4"	10-3/4"	11	5
1304995	1305006	1480976	#3	3-1/4" – 10"	14-1/2"	19	5



## Product Specifications

Test Type		EPDM	Silicone (Hi-Temp)
Advance ozone resistance test @ 500 pphm		70 Hrs.	70 Hrs.
High temperature	Intermittent	+275° F	+500° F
	Continuous	+212° F	+437° F
Low temperature	Resistance tested to	-65° F	-100° F
	Tensile strength	1450 psi	700 psi

## Options

### Colors available in standard square and round base pipe flashing

- Black
- Gray
- Brown
- Light Blue
- Dark Blue
- White
- Terra Cotta
- Light Green
- Dark Green
- Bright Red