

MEGA-RIB

INSTALLATION

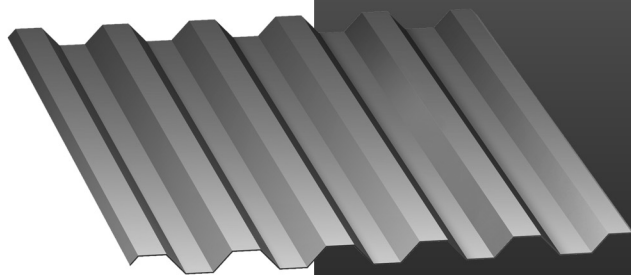


TABLE OF CONTENTS

PAGE NUMBER:	DETAIL DESCRIPTION
--------------	--------------------

WALL DETAILS:

A-1.....	TABLE OF CONTENTS
A-2.....	GENERAL NOTES
B-1.....	FASTENER PATTERN
C-1.....	SIMPLE BASE w/o NOTCH DETAIL
C-2.....	BASE DETAIL
C-3.....	SIMPLE BASE w/ NOTCH DETAIL
C-4.....	WALL PANEL TO GIRT DETAIL
C-5.....	OUTSIDE CORNER DETAIL
C-6 & C-7.....	OUTSIDE CORNER OFF-MODULE DETAIL
C-8.....	HEAD DETAIL
C-9.....	JAMB w/o NOTCH DETAIL
C-10.....	SIMPLE BASE w/o NOTCH DETAIL (HORIZONTAL)
C-11.....	BASE DETAIL (HORIZONTAL)
C-12.....	SIMPLE BASE w/ NOTCH DETAIL (HORIZONTAL)
C-13.....	WALL PANEL TO WALL FRAMING DETAIL
C-14.....	OUTSIDE CORNER DETAIL (HORIZONTAL)
C-15.....	HEAD DETAIL (HORIZONTAL)
C-16.....	JAMB DETAIL (HORIZONTAL)

ROOF DETAILS:

C-17.....	EAVE DETAIL
C-18.....	EAVE w/ GUTTER DETAIL
C-19.....	END LAP DETAIL
C-20.....	INTERMEDIATE PURLIN DETAIL
C-21.....	RIDGE DETAIL
C-22.....	RAKE DETAIL
C-23.....	RAKE OFF-MODULE DETAIL
C-24.....	HIGH SIDE EAVE DETAIL
C-25.....	TRIM LAP DETAILS

GENERAL NOTES

The details shown on the following pages are suggestions or guidelines for installing the Mega-Rib wall and roof panel system. The installation details shown here are proven methods of construction, but they are not intended to cover all building requirements, designs or codes. The details may require changes or revisions due to individual project conditions.

Installation procedures shall be in accordance with the manufacturer's printed instructions, details or approved shop drawings. Installers should thoroughly familiarized themselves with all instructions prior to beginning the installation process.

The designer/installer is responsible to ensure the following:

That the details here meet the particular building requirements.

That adequate water tightness is maintained.

That a proper uniform substructure is used to avoid panel distortion and that the substructure meets necessary code requirements.

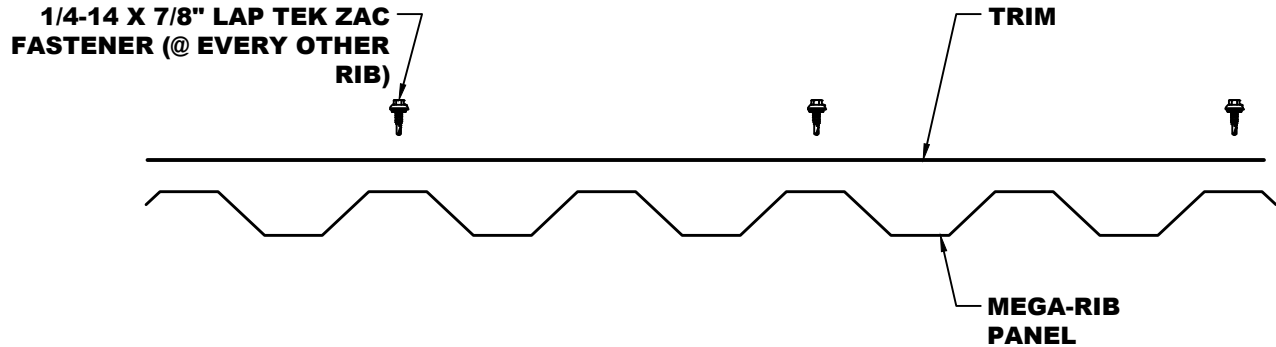
That all supporting members have been examined and are straight, level and plumb.

McElroy Metal can provide all flashings and accessories shown in the installation drawings unless noted otherwise. Panels, flashing and trim shall be installed true and in proper alignment with any exposed fasteners equally spaced for the best appearance. Sealant shall be field applied on a clean, dry surface.

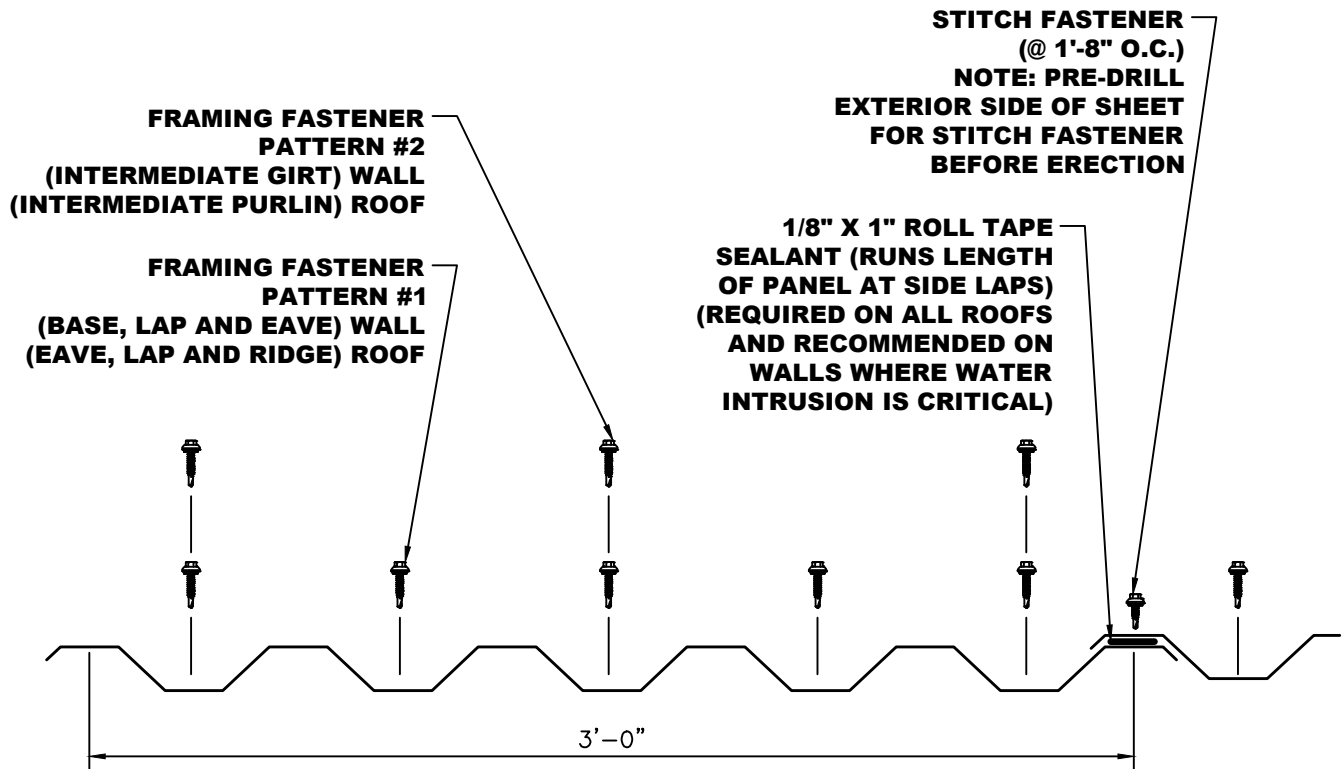
Some field cutting and fitting of panels and flashings is to be expected and to be considered a part of normal installation work. Workmanship shall be of the best industry standards and with installation performed by experienced metal craftsmen.

Oil canning of metal panels is inherent in the product and is not a cause for rejection. Striated panels are recommended as they reduce the appearance of oil canning.

Contents of this manual are subject to change without notice. To confirm this book is the most current copy, please visit McElroy Metal's website at www.mcelroymetal.com.

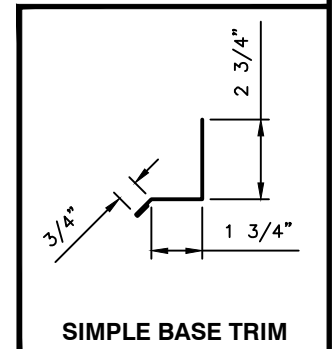
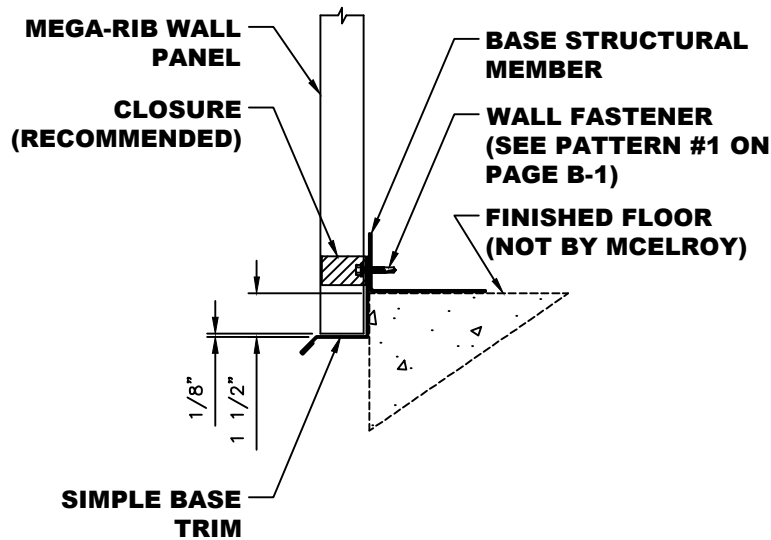


TRIM FASTENER PATTERN

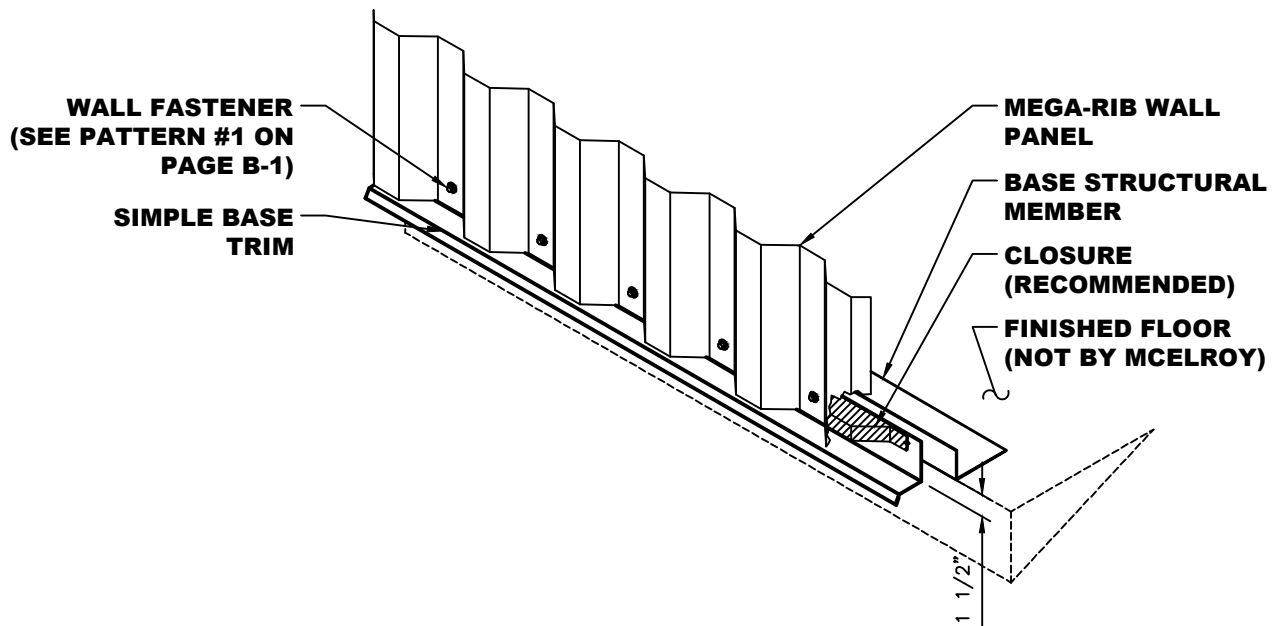


PANEL FRAMING AND STITCH FASTENER PATTERNS

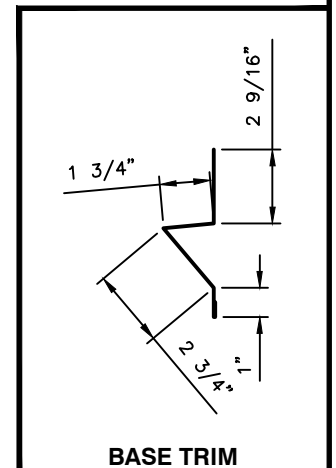
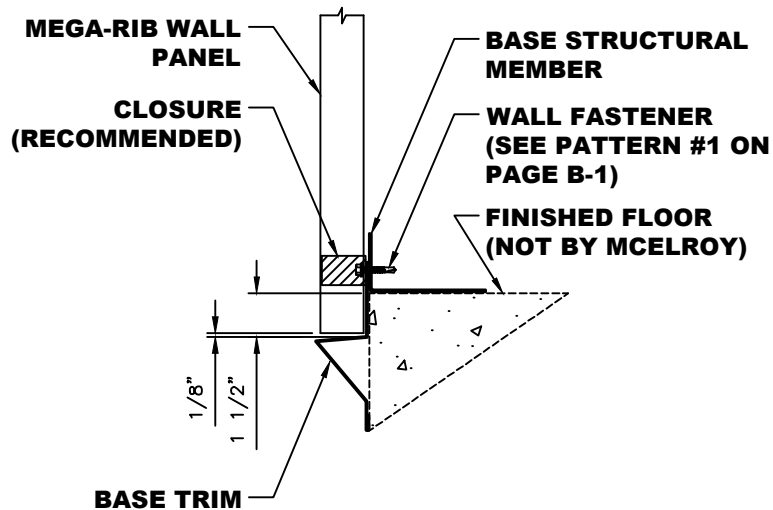
MEGA-RIB SIMPLE BASE w/o NOTCH DETAIL



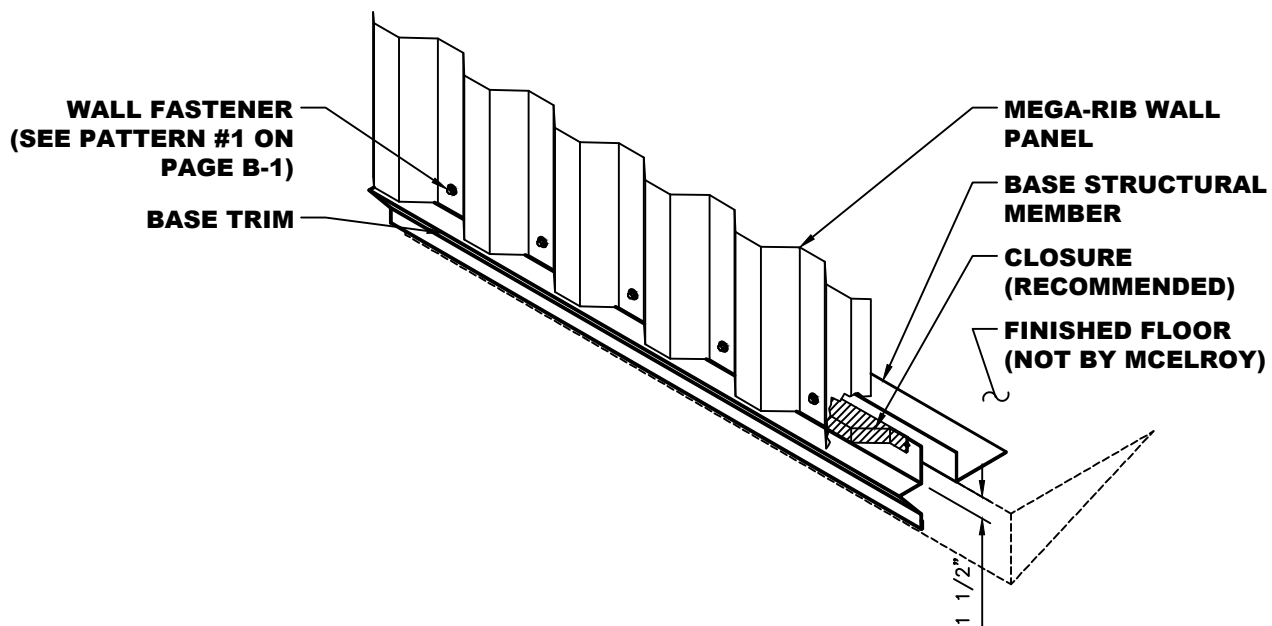
- NOTES:**
1. Base Structural Member set flush with edge of Finished Floor.
 2. Set Simple Base Trim 1 1/2" down face of finished floor.
 3. Set Closure in position on Simple Base Trim.
 4. Set Mega-Rib Wall Panel into place. Make sure to leave a 1/8" gap between trim and panel.
 5. Attach panel with Framing Fasteners per fastening pattern shown on page B-1.



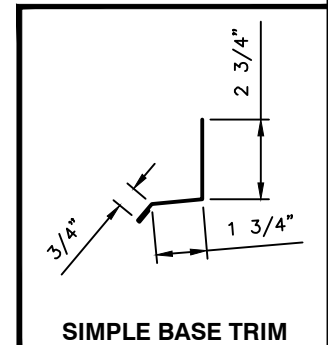
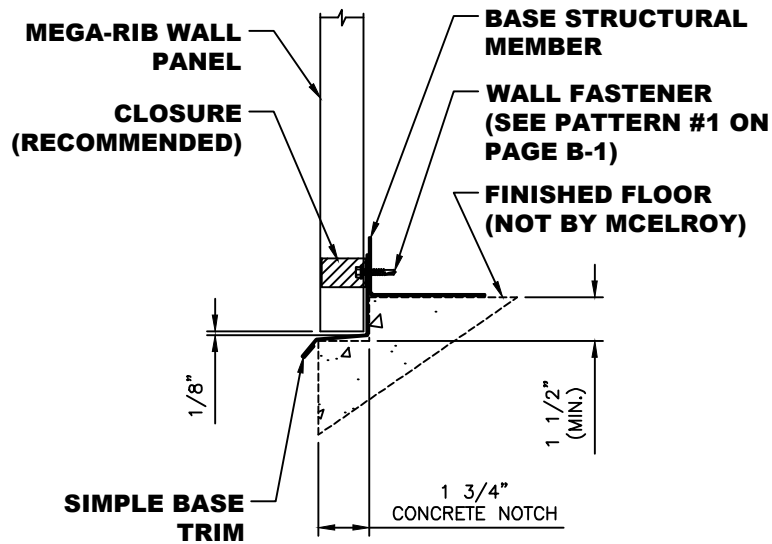
*NOTE: SOME TRIM ITEMS AND FASTENERS HAVE BEEN REMOVED FOR CLARITY OF ISOMETRIC DETAIL.



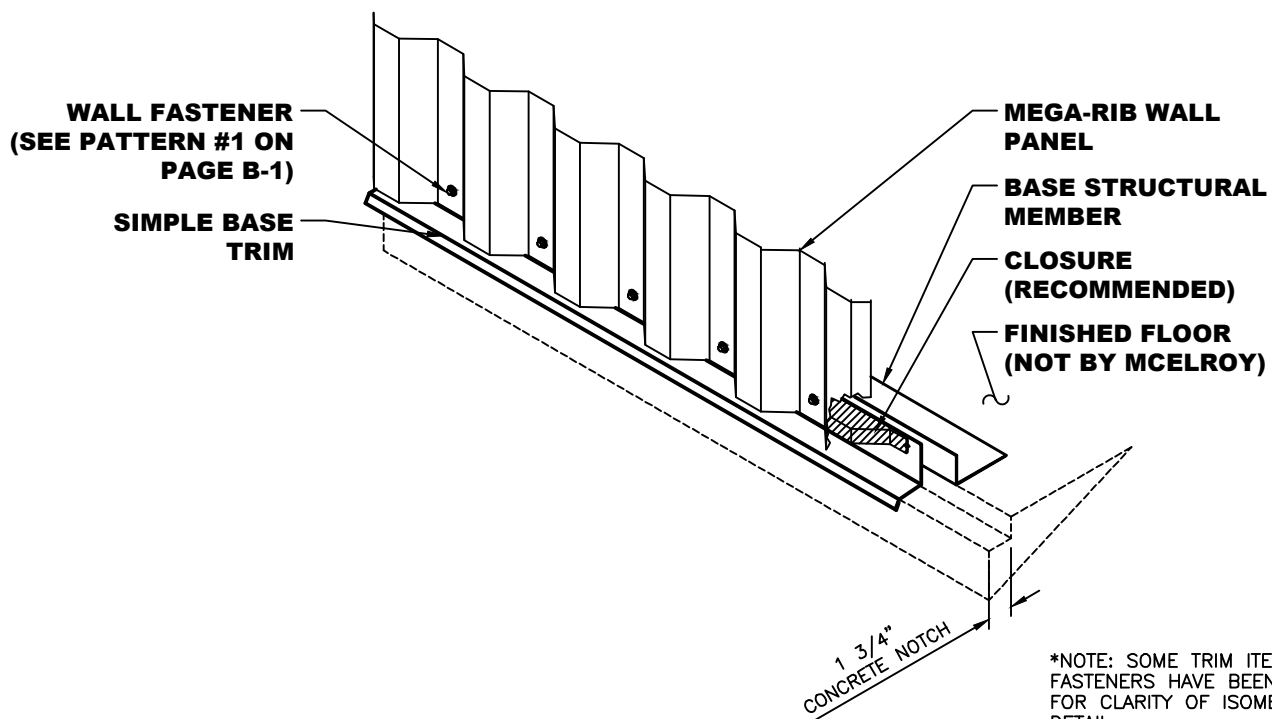
- NOTES:**
1. Base Structural Member set flush with edge of Finished Floor.
 2. Set Base Trim 1 1/2" down face of finished floor.
 3. Set Closure in position on Base Trim.
 4. Set Mega-Rib Wall Panel into place. Make sure to leave a 1/8" gap between trim and panel.
 5. Attach panel with Framing Fasteners per fastening pattern shown on page B-1.

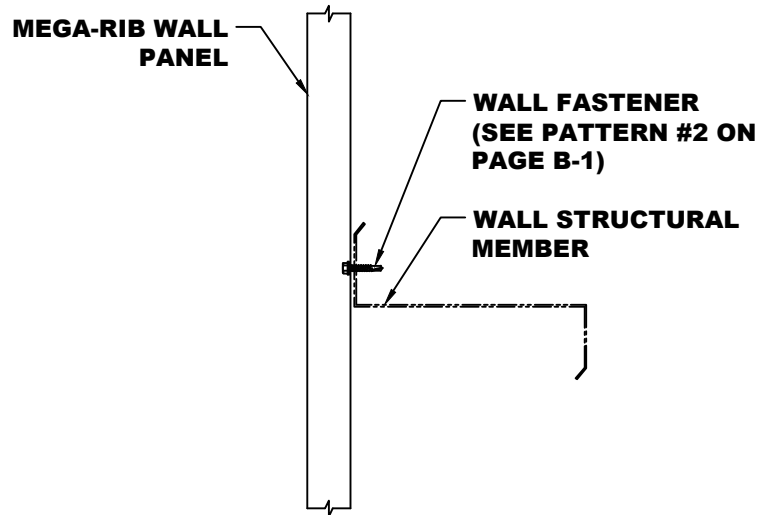


*NOTE: SOME TRIM ITEMS AND FASTENERS HAVE BEEN REMOVED FOR CLARITY OF ISOMETRIC DETAIL.

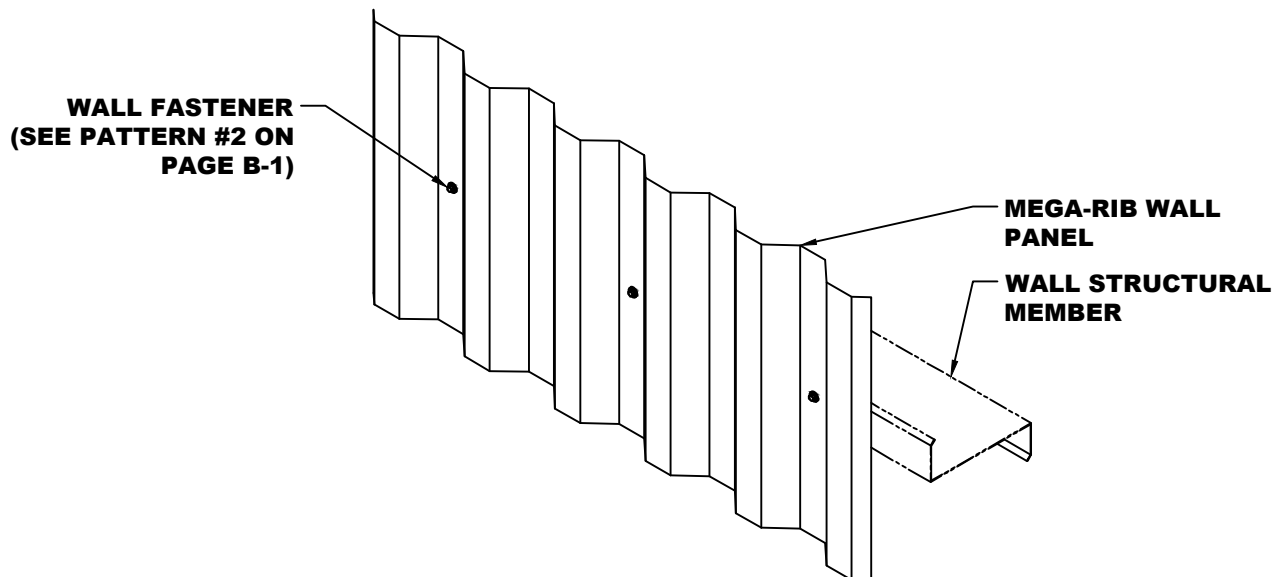


- NOTES:**
1. Base Structural Member set flush with edge of concrete notch.
 2. Set Simple Base Trim in concrete notch.
 3. Set Closure in position on Simple Base Trim.
 4. Set Mega-Rib Wall Panel into place. Make sure to leave a 1/8" gap between trim and panel.
 5. Attach panel with Framing Fasteners per fastening pattern shown on page B-1.

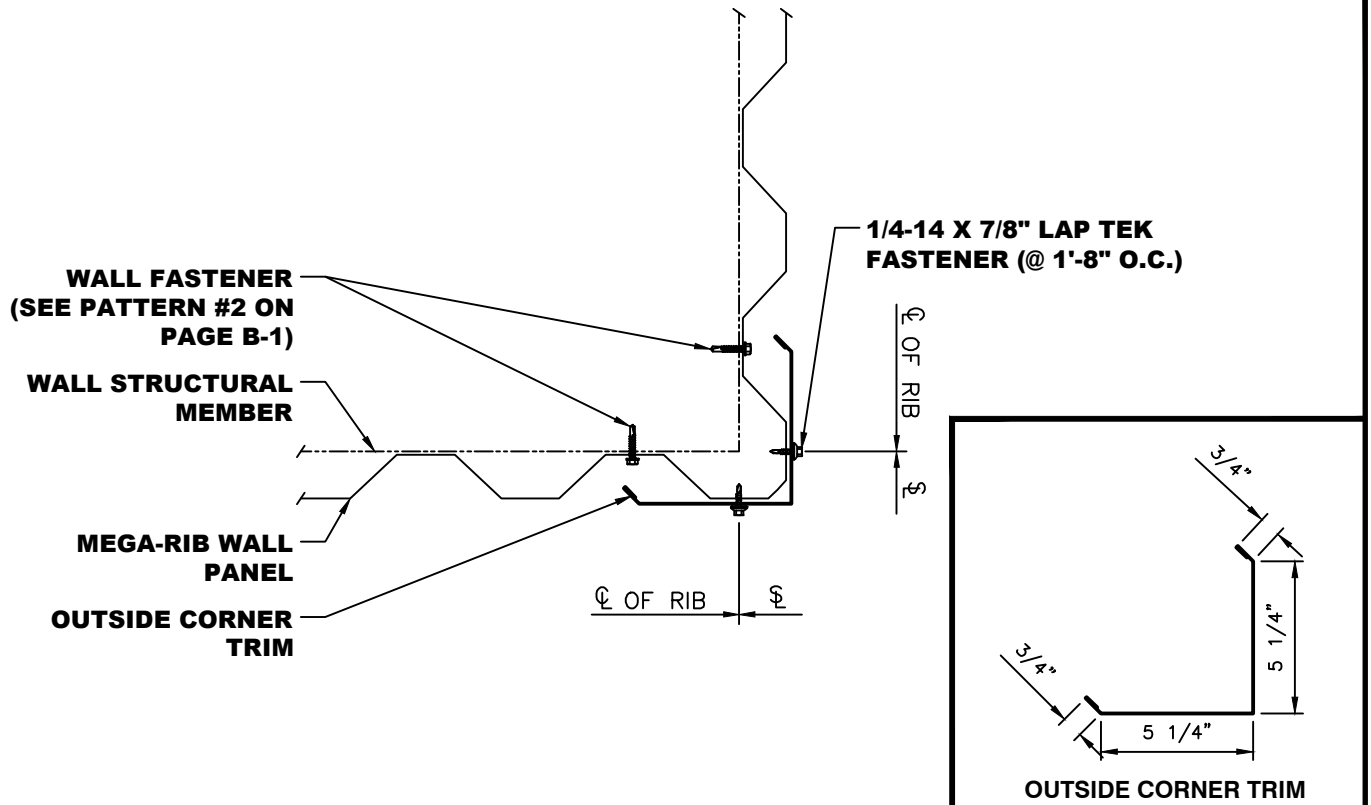




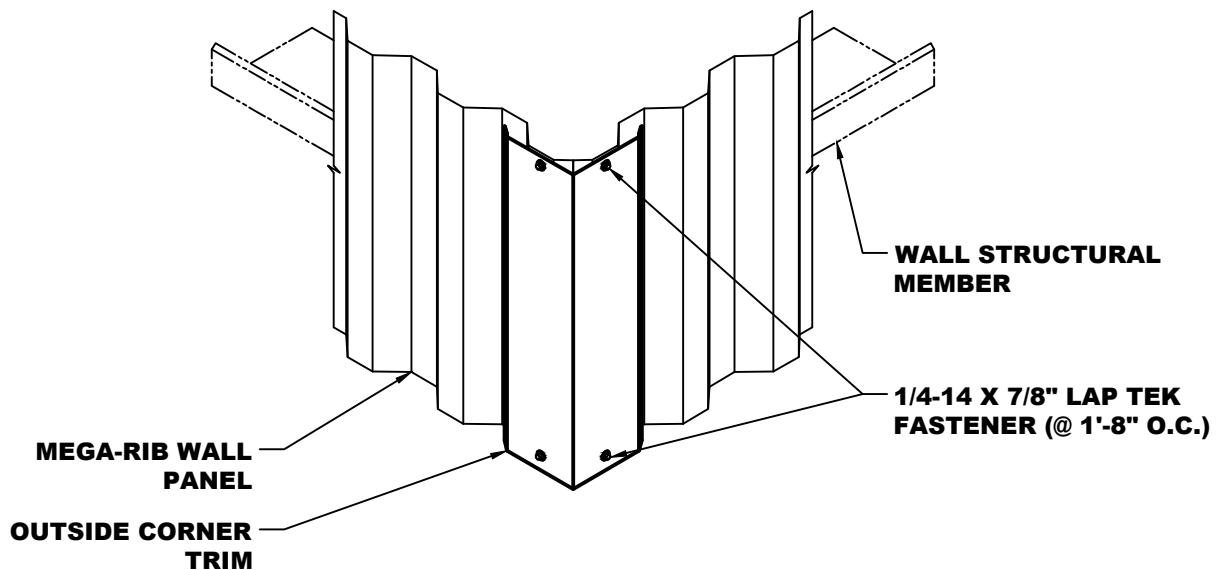
NOTES: 1. Attach Mega-Rib Wall panel to Wall Structural Member with Framing Fasteners using Fastener Pattern #2 as shown on page B-1.



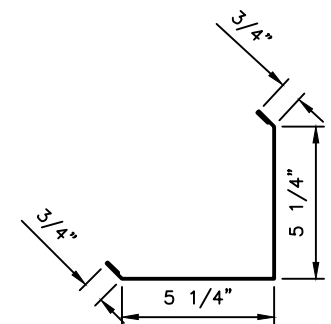
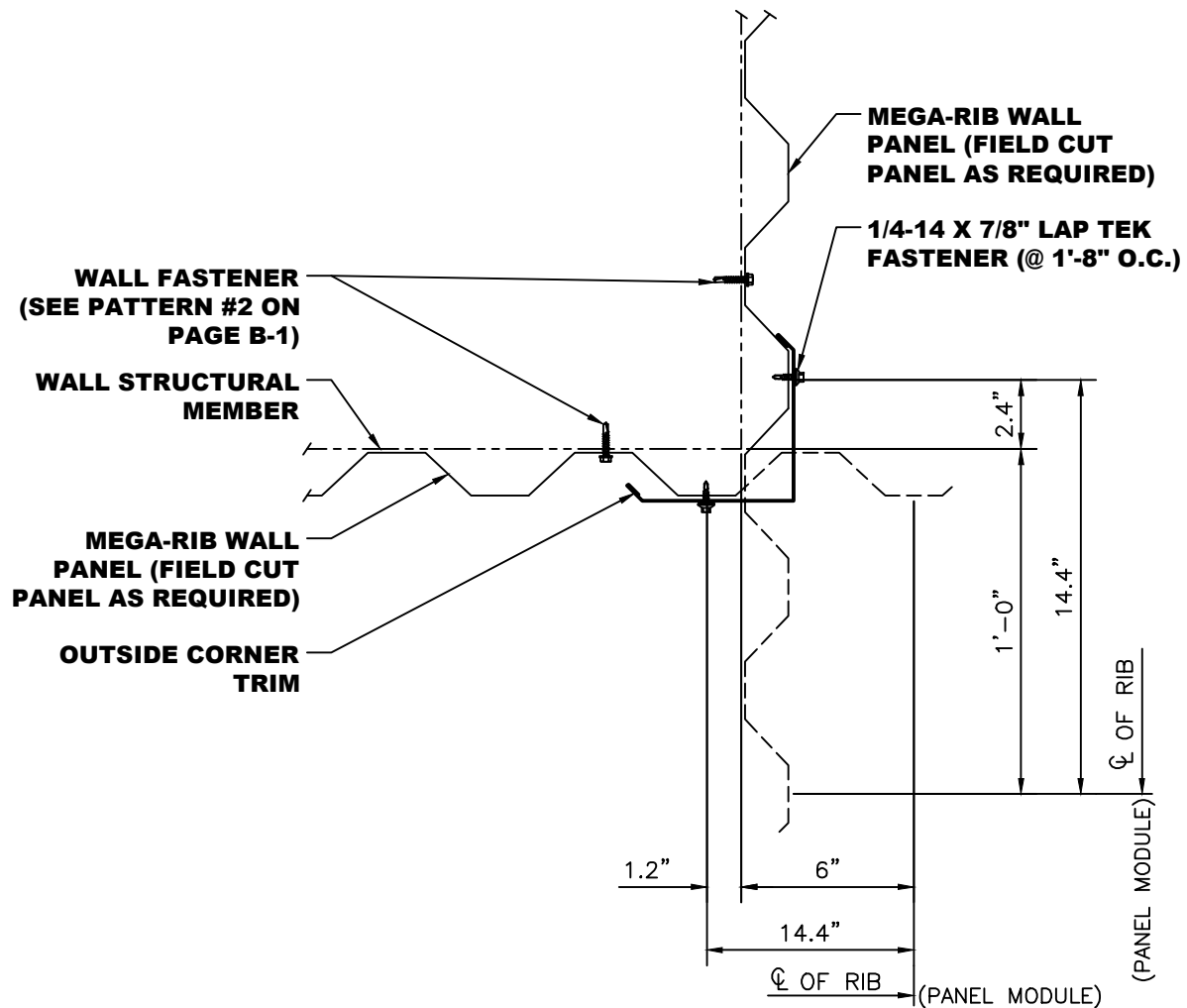
*NOTE: SOME TRIM ITEMS AND FASTENERS HAVE BEEN REMOVED FOR CLARITY OF ISOMETRIC DETAIL.



NOTES: 1. Attach Mega-Rib Wall panel to Wall Structural Member with Framing Fasteners using Fastener Pattern #2 as shown on page B-1.

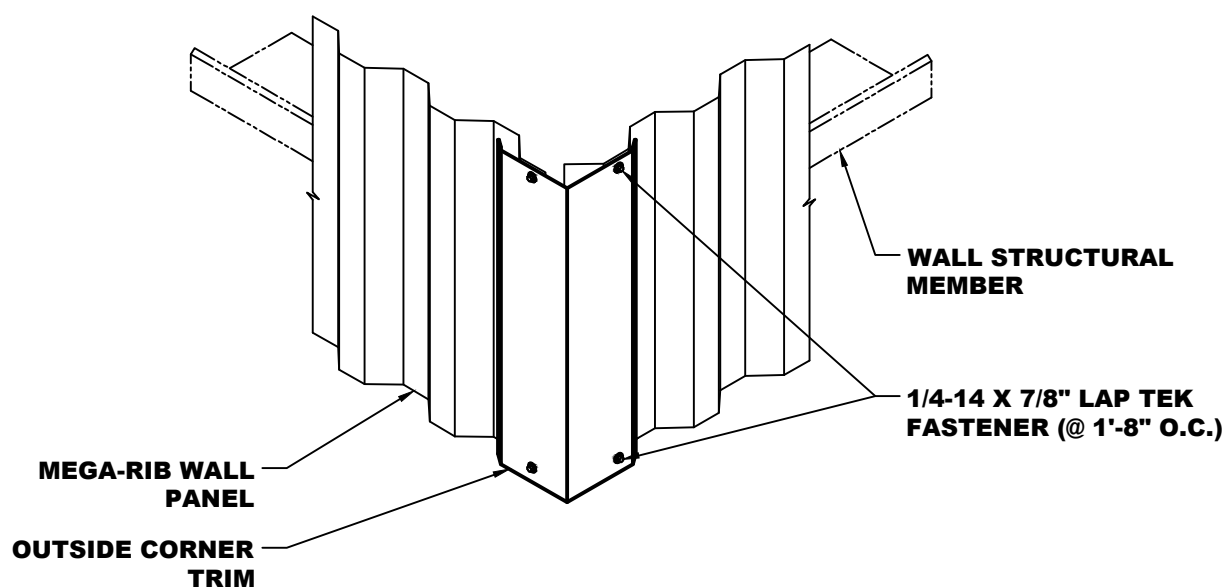


*NOTE: SOME TRIM ITEMS AND FASTENERS HAVE BEEN REMOVED FOR CLARITY OF ISOMETRIC DETAIL.

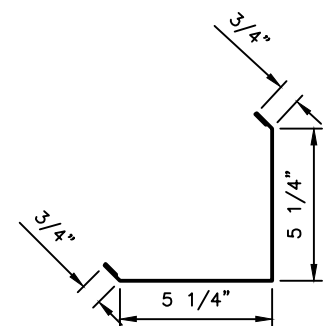
**OUTSIDE CORNER TRIM**

NOTES: 1. Attach Mega-Rib Wall panel to Wall Structural Member with Framing Fasteners using Fastener Pattern #2 as shown on page B-1.

MEGA-RIB **OUTSIDE CORNER (OFF MODULE) DETAIL**

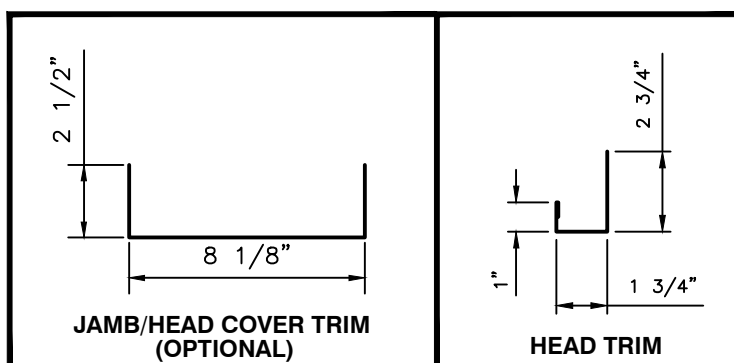
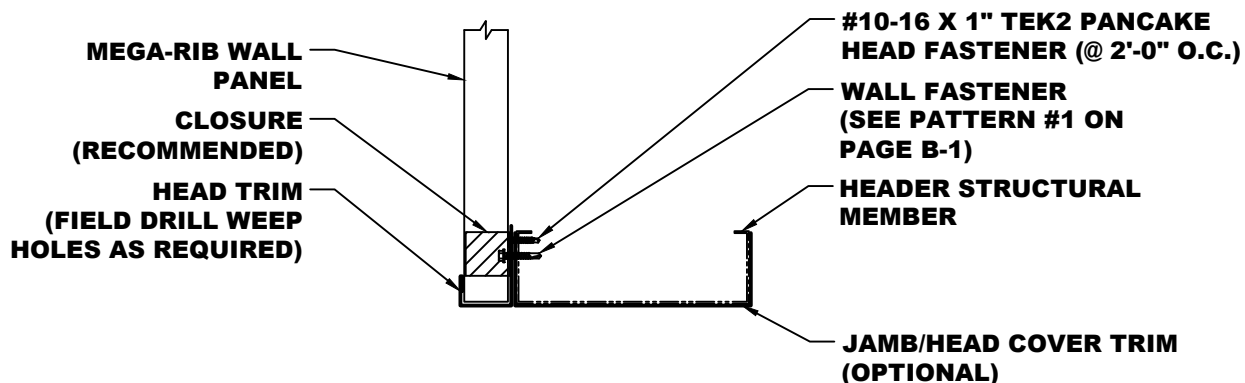


*NOTE: SOME TRIM ITEMS AND FASTENERS HAVE BEEN REMOVED FOR CLARITY OF ISOMETRIC DETAIL.

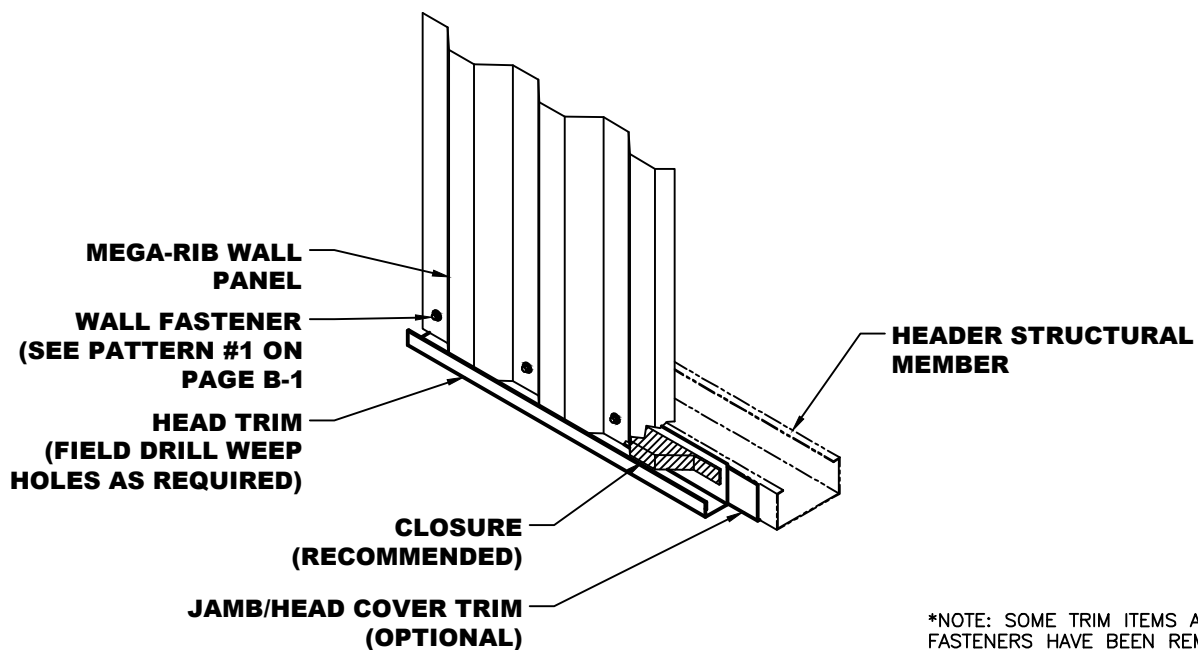


OUTSIDE CORNER TRIM

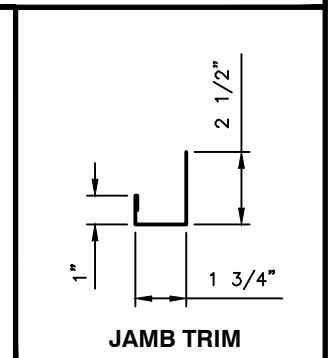
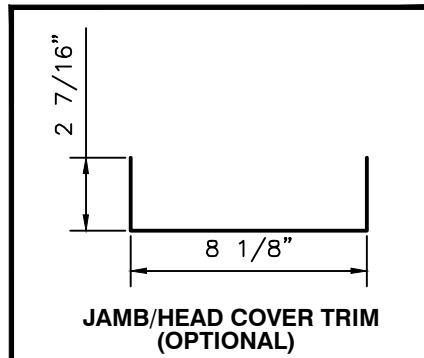
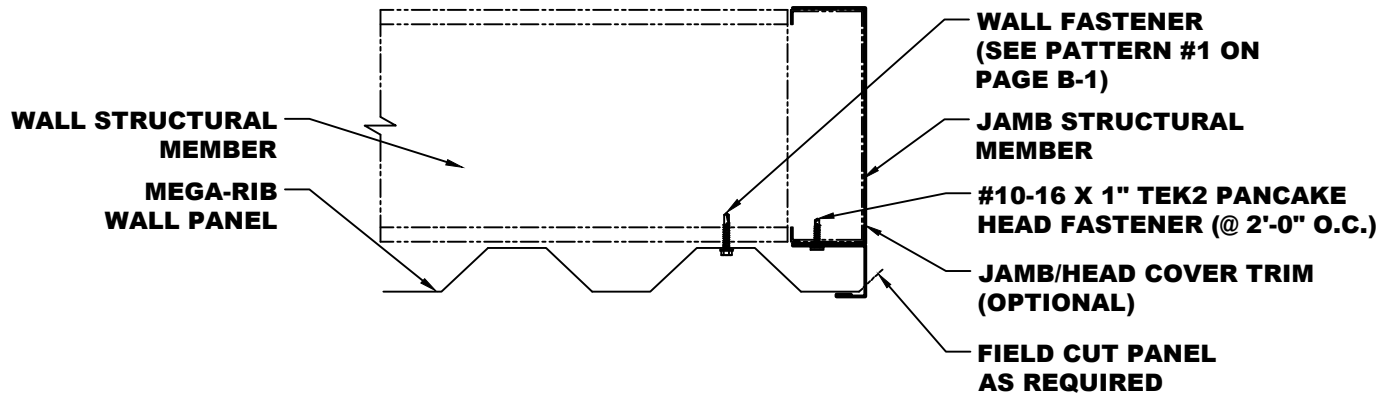
NOTES: 1. Attach Mega-Rib Wall panel to Wall Structural Member with Framing Fasteners using Fastener Pattern #2 as shown on page B-1.



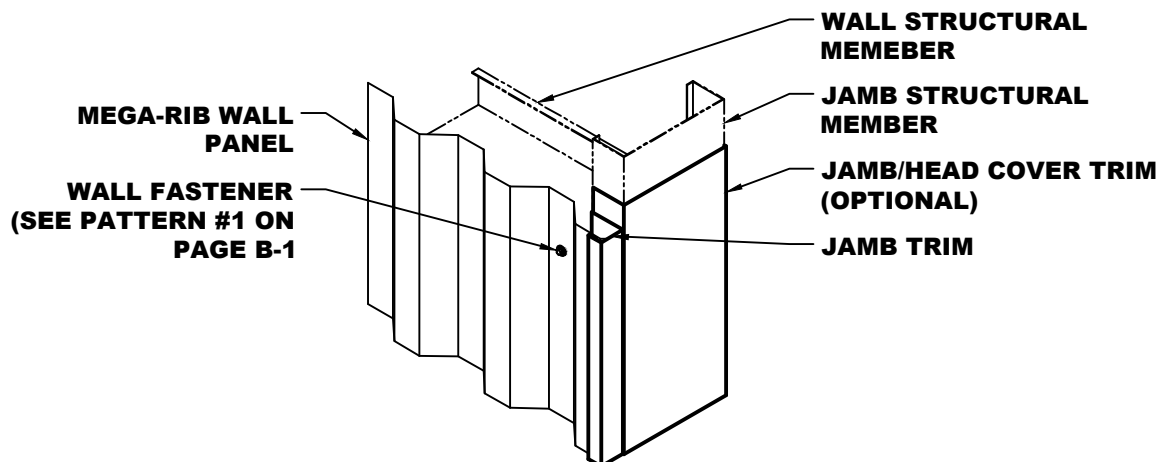
- NOTES:** 1. Attach Head Trim to Header using #10-16 x 1" TEK2 Pancake Head Fasteners every 2'-0" O.C.
 2. Attach Closure to Head Trim.
 3. Install Mega-Rib Panel to Head Structural Member using Wall Fasteners and Fastener Pattern #1 on page B-1.



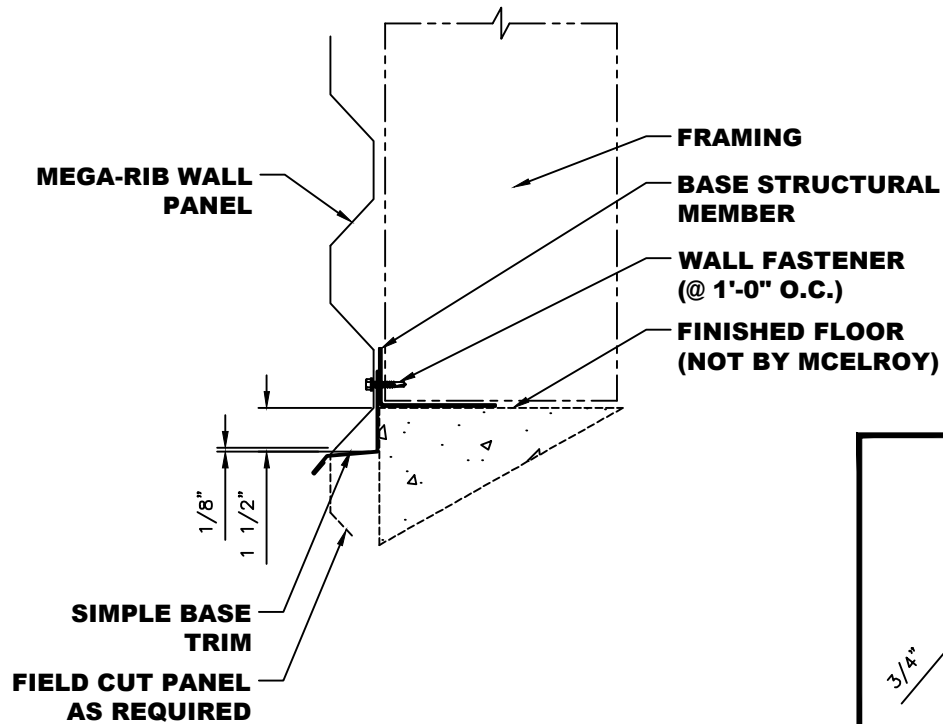
*NOTE: SOME TRIM ITEMS AND FASTENERS HAVE BEEN REMOVED FOR CLARITY OF ISOMETRIC DETAIL.



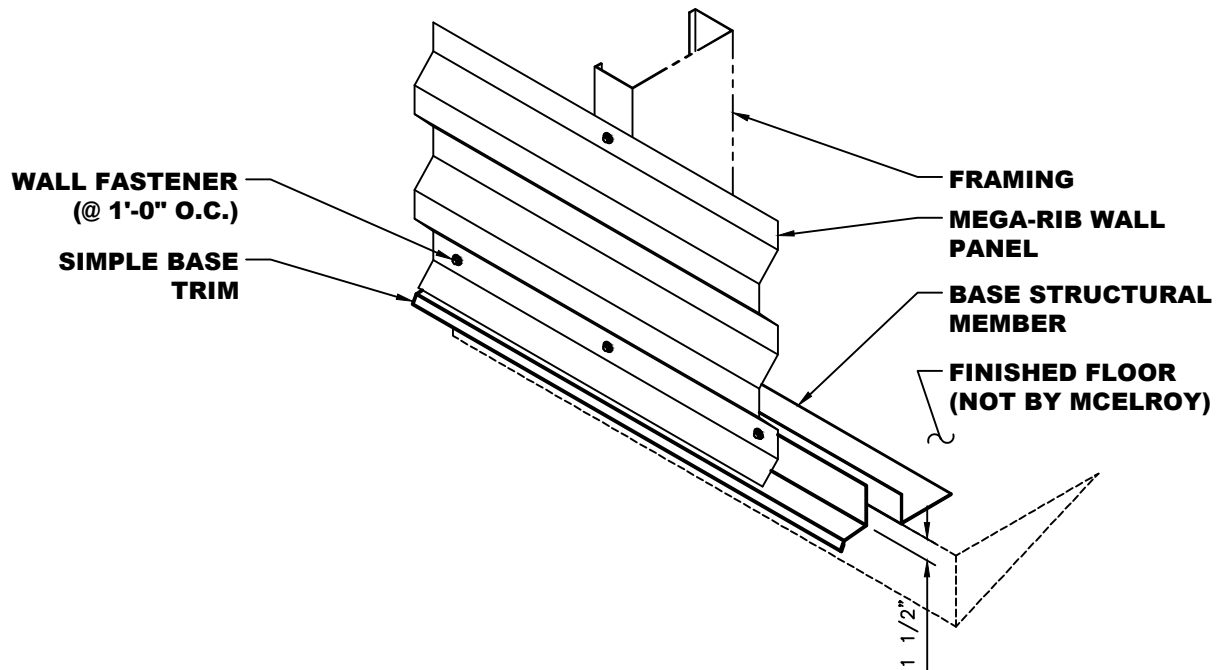
- NOTES:** 1. Attach Jamb Trim to Jamb Structural Member using #10-16 x 1" TEK2 Pancake Head Fasteners every 2'-0" O.C.
2. Install Mega-Rib Panel to Wall Structural Member using Wall Fasteners and Fastener Pattern #1 on page B-1.



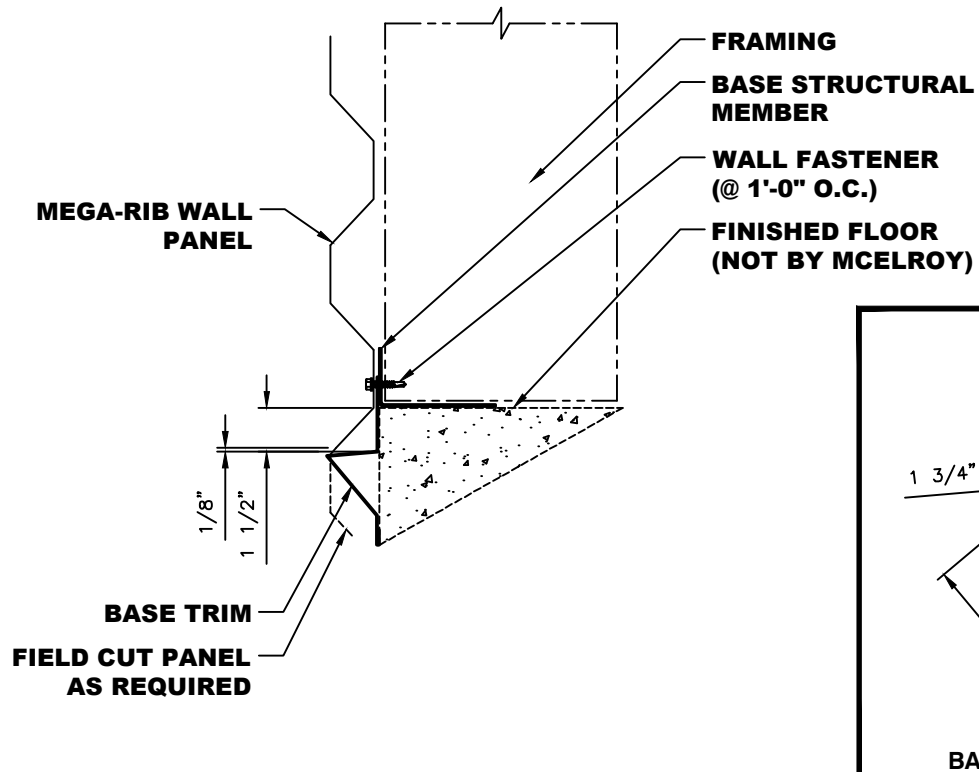
*NOTE: SOME TRIM ITEMS AND FASTENERS HAVE BEEN REMOVED FOR CLARITY OF ISOMETRIC DETAIL.



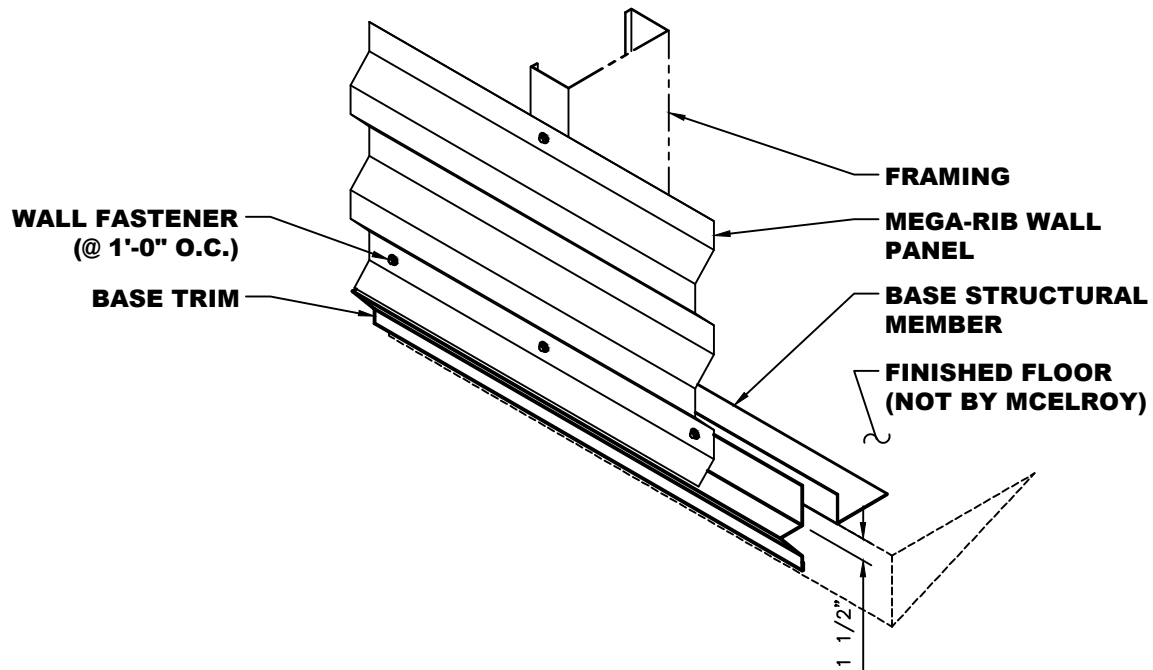
- NOTES:**
1. Base Structural Member set flush with edge of Finished Floor.
 2. Set Simple Base Trim 1 1/2" down face of finished floor.
 3. Set Mega-Rib Wall Panel into place. Make sure to leave a 1/8" gap between trim and panel. Field cut panel rib as required.
 4. Attach panel with Framing Fasteners at 1'-0" O.C.



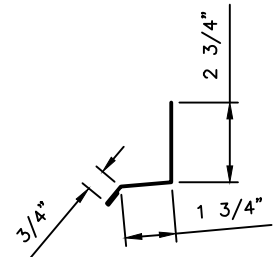
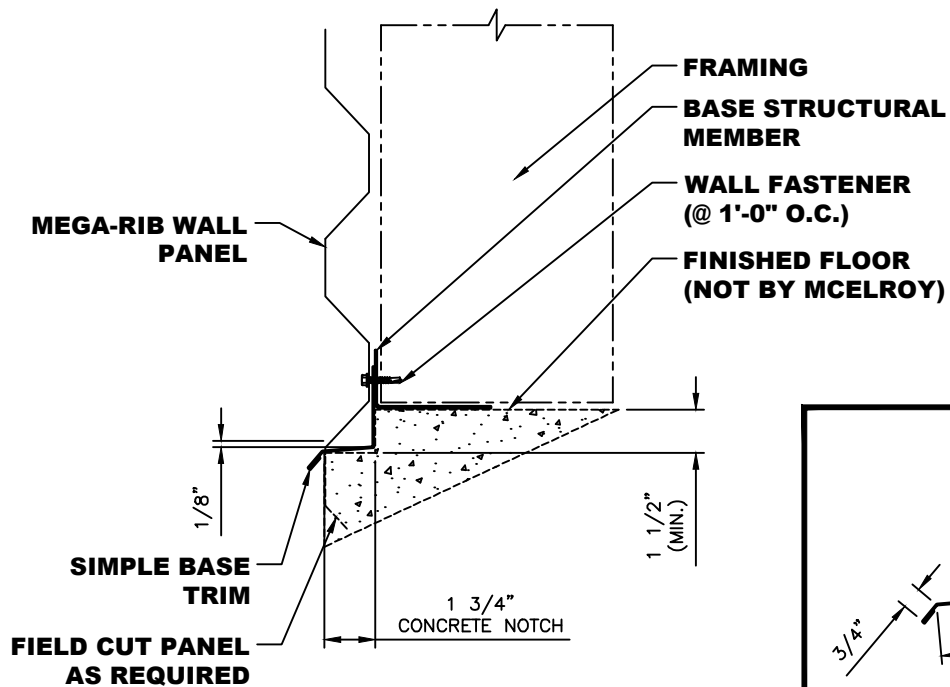
*NOTE: SOME TRIM ITEMS AND FASTENERS HAVE BEEN REMOVED FOR CLARITY OF ISOMETRIC DETAIL.



- NOTES:**
1. Base Structural Member set flush with edge of Finished Floor.
 2. Set Base Trim 1 1/2" down face of finished floor.
 3. Set Mega-Rib Wall Panel into place. Make sure to leave a 1/8" gap between trim and panel. Field cut panel rib as required.
 4. Attach panel with Framing Fasteners at 1'-0" O.C.

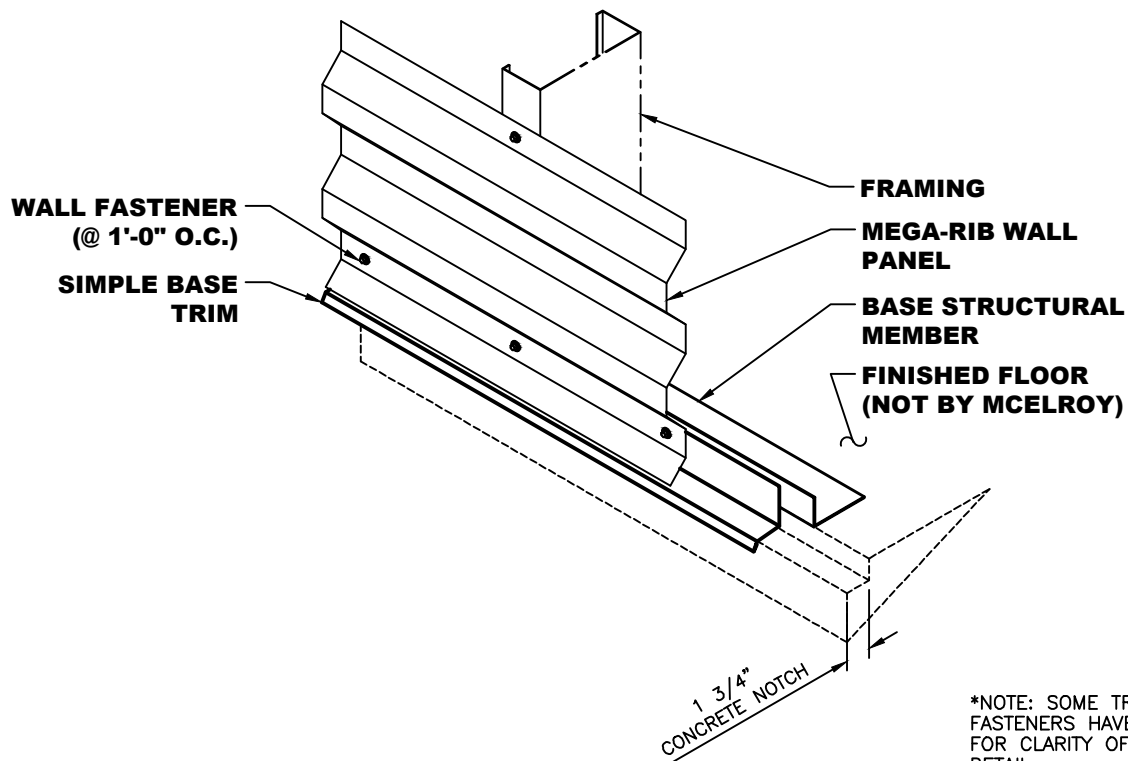


*NOTE: SOME TRIM ITEMS AND FASTENERS HAVE BEEN REMOVED FOR CLARITY OF ISOMETRIC DETAIL.



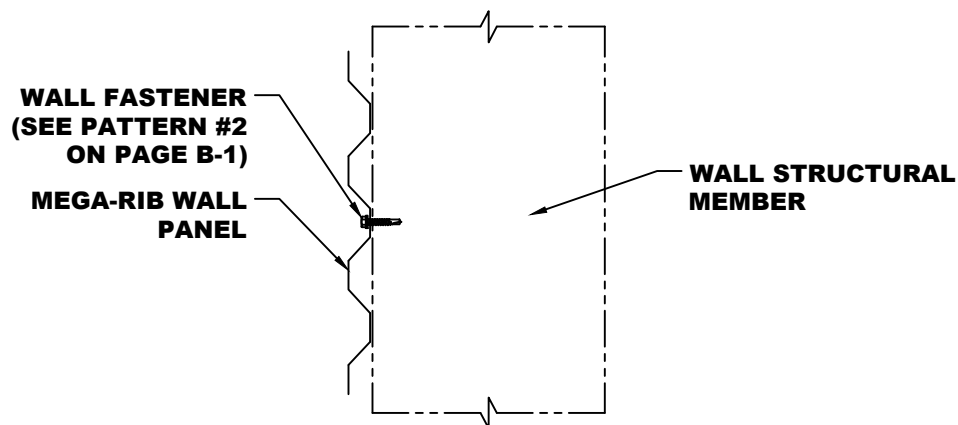
SIMPLE BASE TRIM

- NOTES:**
1. Base Structural Member set flush with edge of concrete notch.
 2. Set Simple Base Trim in concrete notch.
 3. Set Mega-Rib Wall Panel into place. Make sure to leave a 1/8" gap between trim and panel.
 4. Attach panel with Framing Fasteners at 1'-0" O.C.

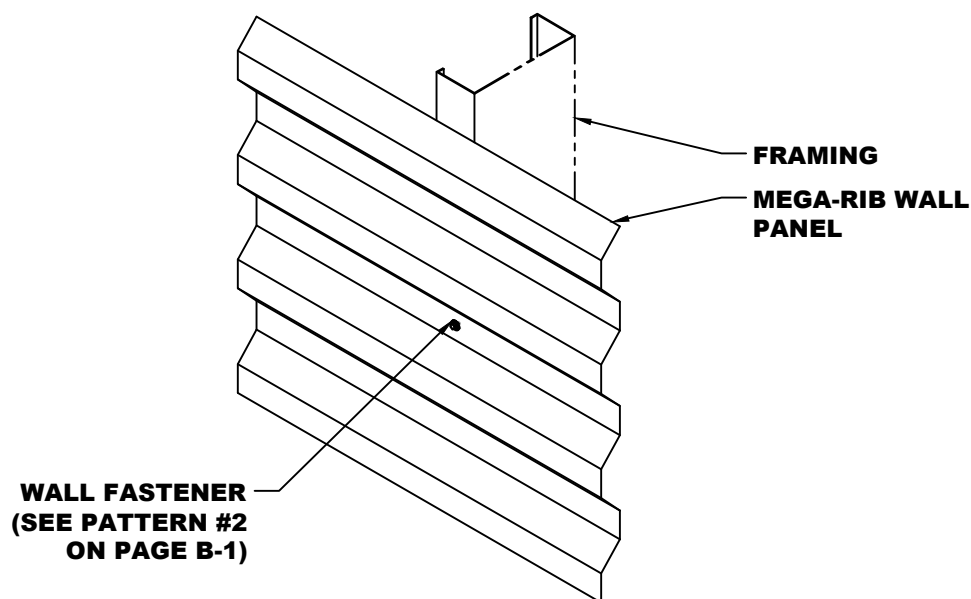


*NOTE: SOME TRIM ITEMS AND FASTENERS HAVE BEEN REMOVED FOR CLARITY OF ISOMETRIC DETAIL.

WALL PANEL TO WALL FRAMING MEMBER

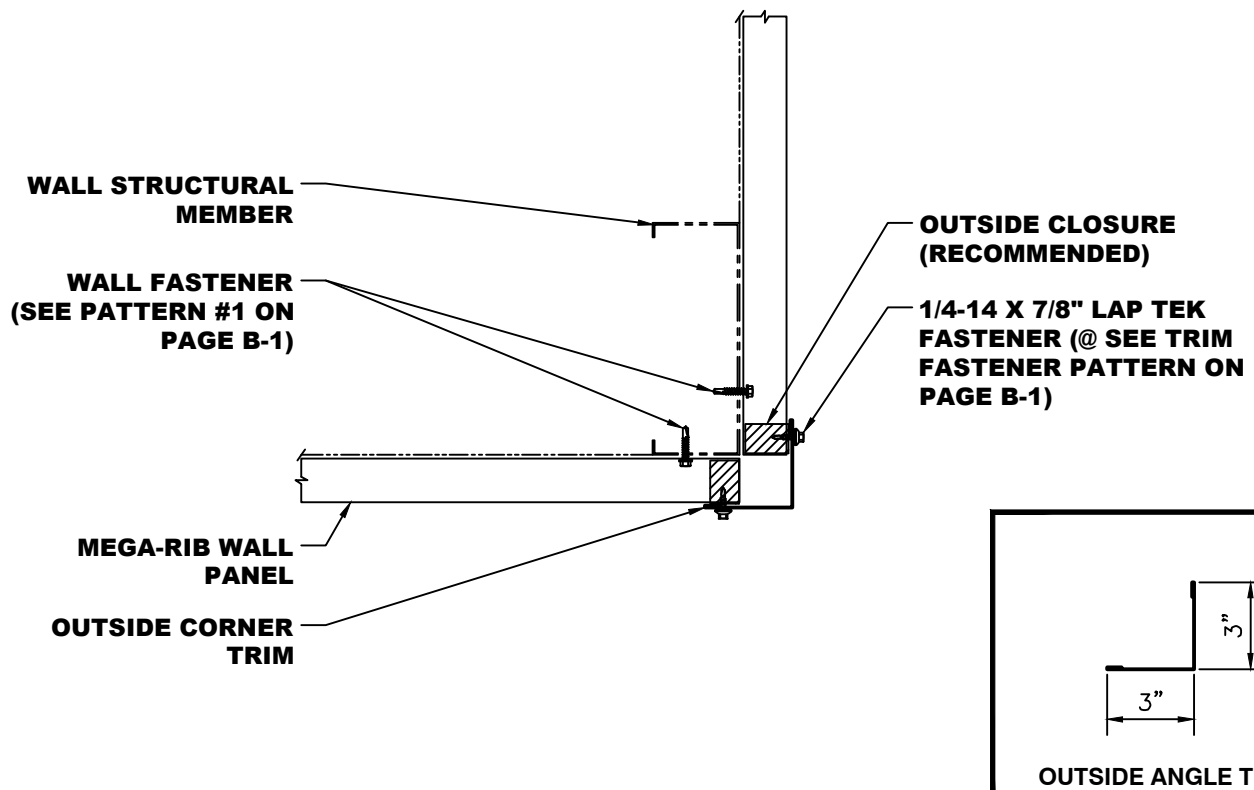


NOTES: 1. Attach Mega-Rib Wall panel to Wall Structural Member with Framing Fasteners. (see Pattern #2 on page B-1)

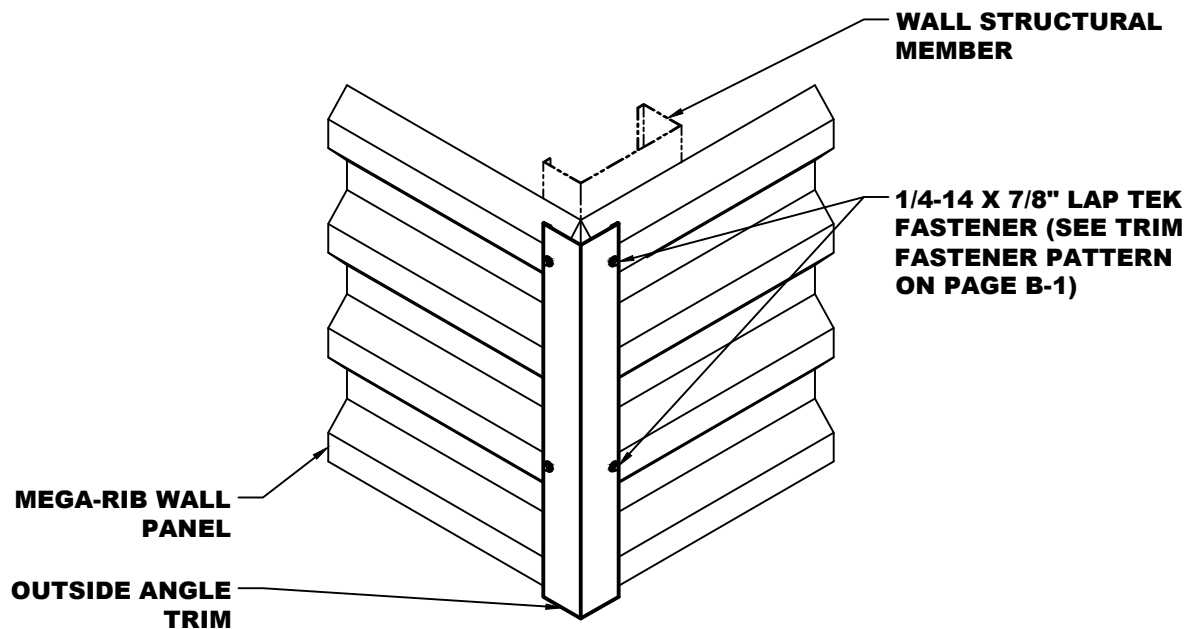


*NOTE: SOME TRIM ITEMS AND FASTENERS HAVE BEEN REMOVED FOR CLARITY OF ISOMETRIC DETAIL.

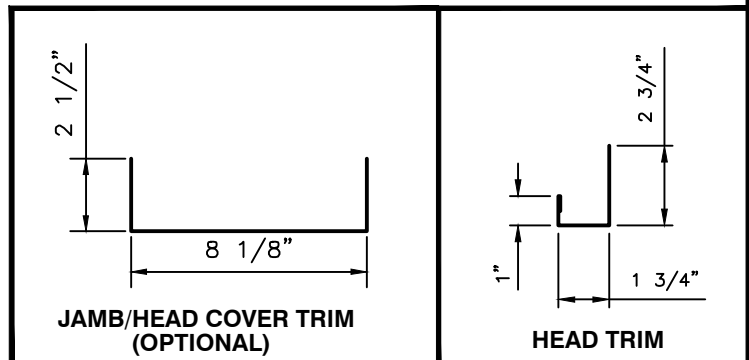
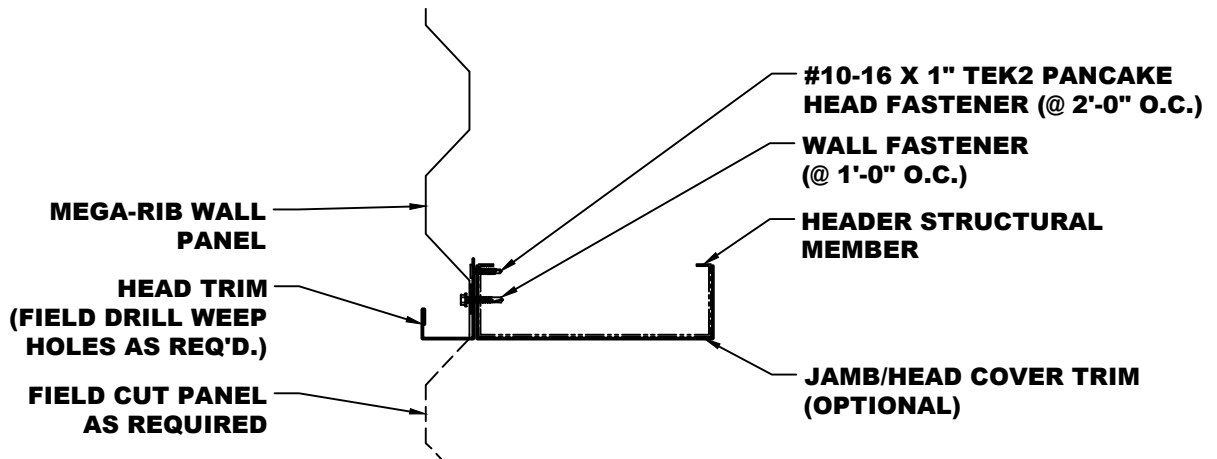
MEGA-RIB OUTSIDE CORNER DETAIL (HORIZONTAL)



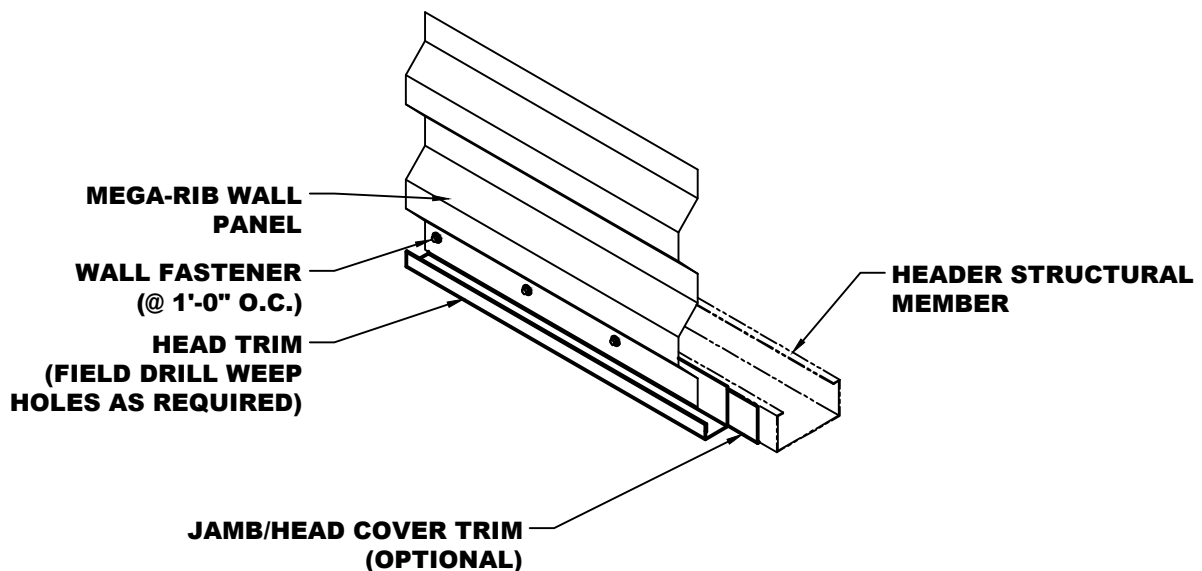
- NOTES:** 1. Attach Mega-Rib Wall panel to Wall Structural Member with Framing Fasteners.
2. Attach Outside Angle Trim using 1/4-14 x 7/8" Lap Tek Fasteners.



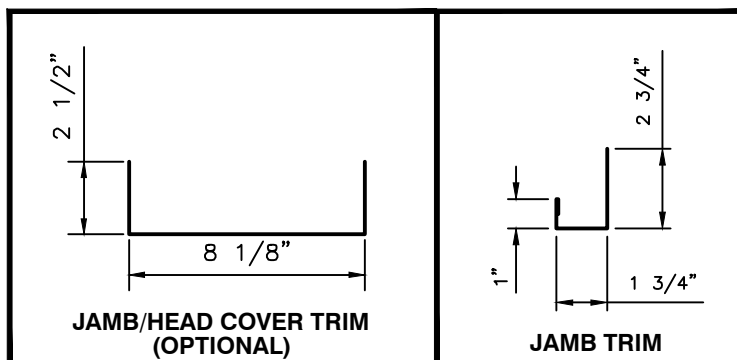
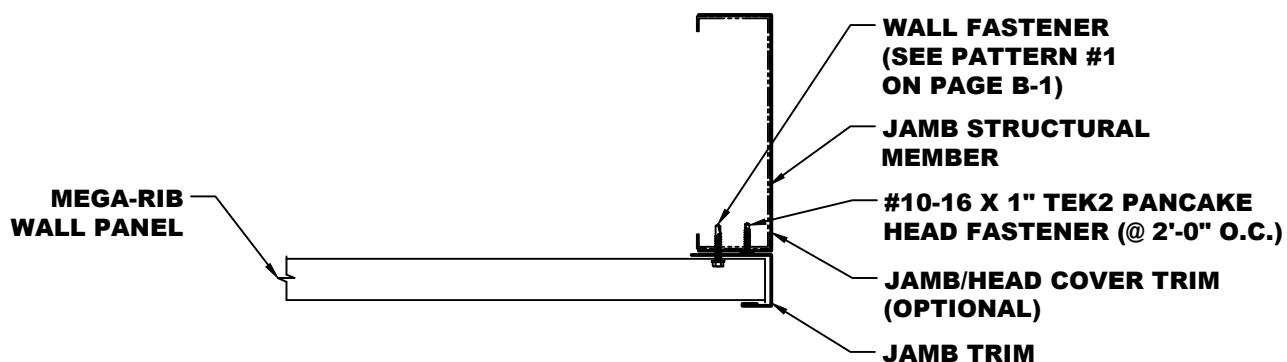
*NOTE: SOME TRIM ITEMS AND FASTENERS HAVE BEEN REMOVED FOR CLARITY OF ISOMETRIC DETAIL.



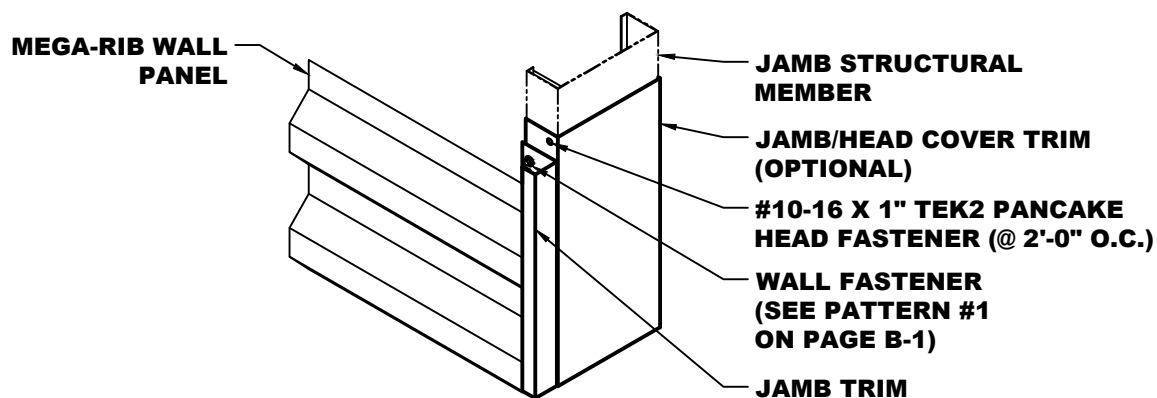
- NOTES:** 1. Attach Head Trim to Header using #10-16 x 1" TEK2 Pancake Head Fasteners every 2'-0" O.C.
 2. Install Mega-Rib Panel to Head Structural Member using Wall Fasteners at 1'-0" O.C.



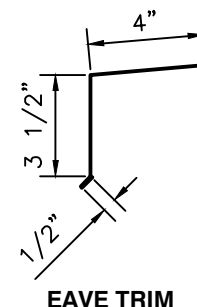
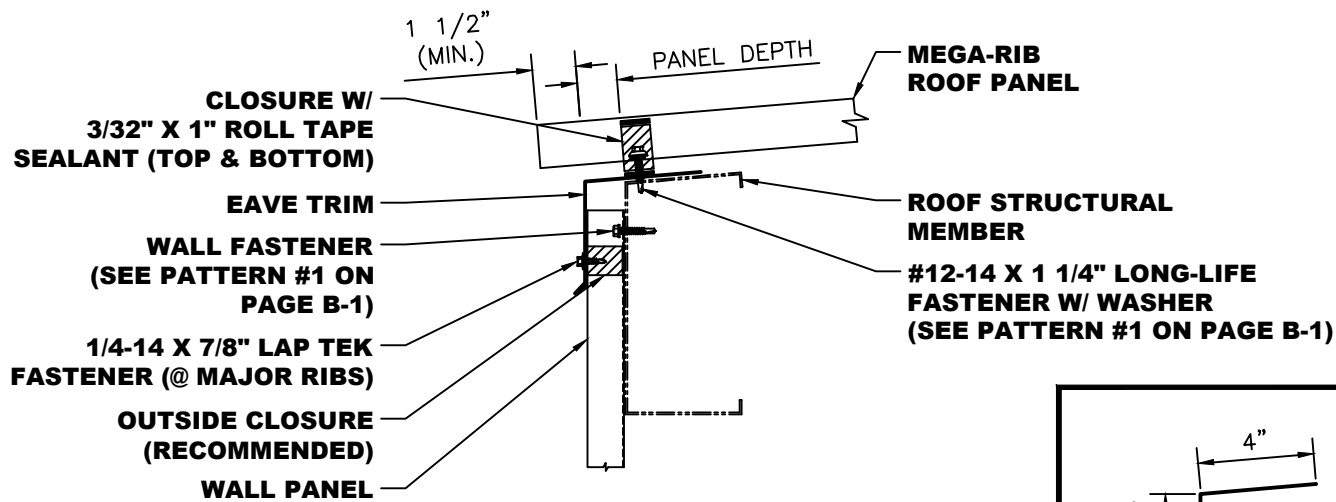
*NOTE: SOME TRIM ITEMS AND FASTENERS HAVE BEEN REMOVED FOR CLARITY OF ISOMETRIC DETAIL.



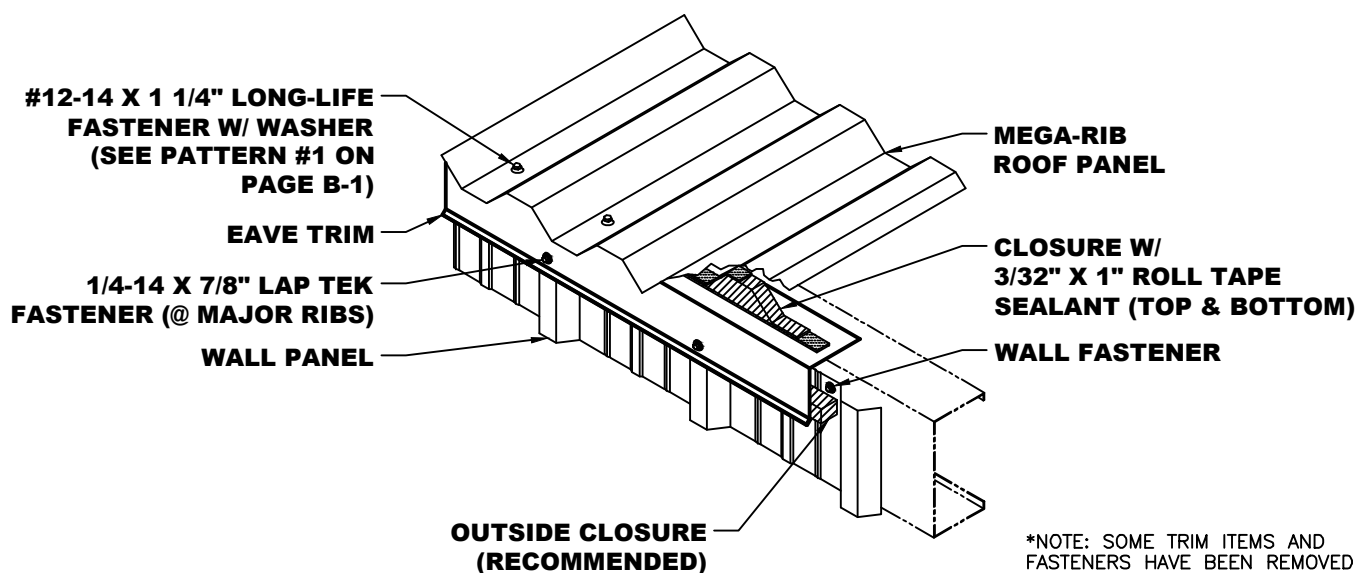
- NOTES:**
1. Attach Jamb Trim to Jamb Structural Member using #10-16 x 1" TEK2 Pancake Head Fasteners every 2'-0" O.C.
 2. Install Mega-Rib Panel to Wall Structural Member using Wall Fasteners. See Fastener Pattern #1 on page B-1.



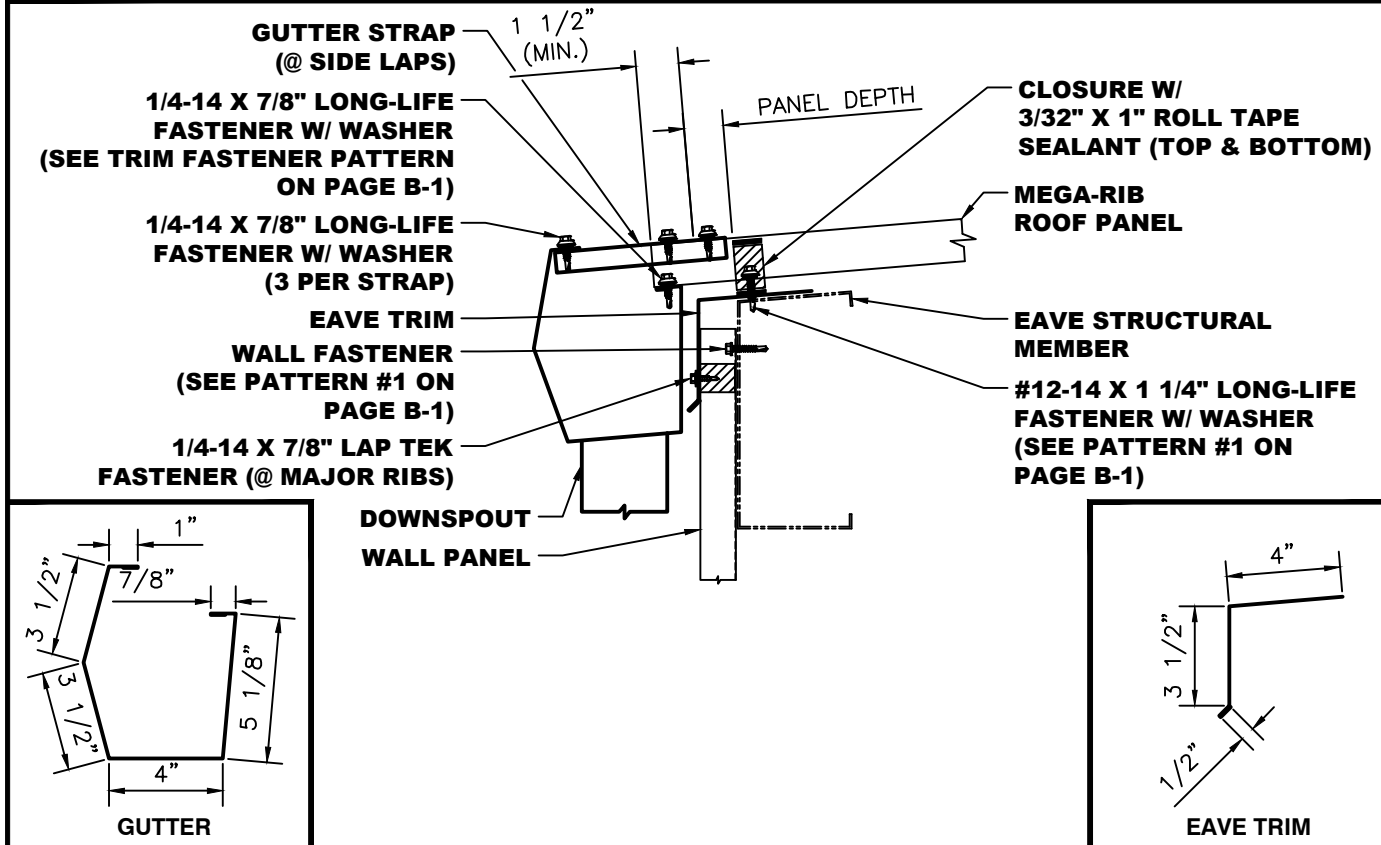
*NOTE: SOME TRIM ITEMS AND FASTENERS HAVE BEEN REMOVED FOR CLARITY OF ISOMETRIC DETAIL.



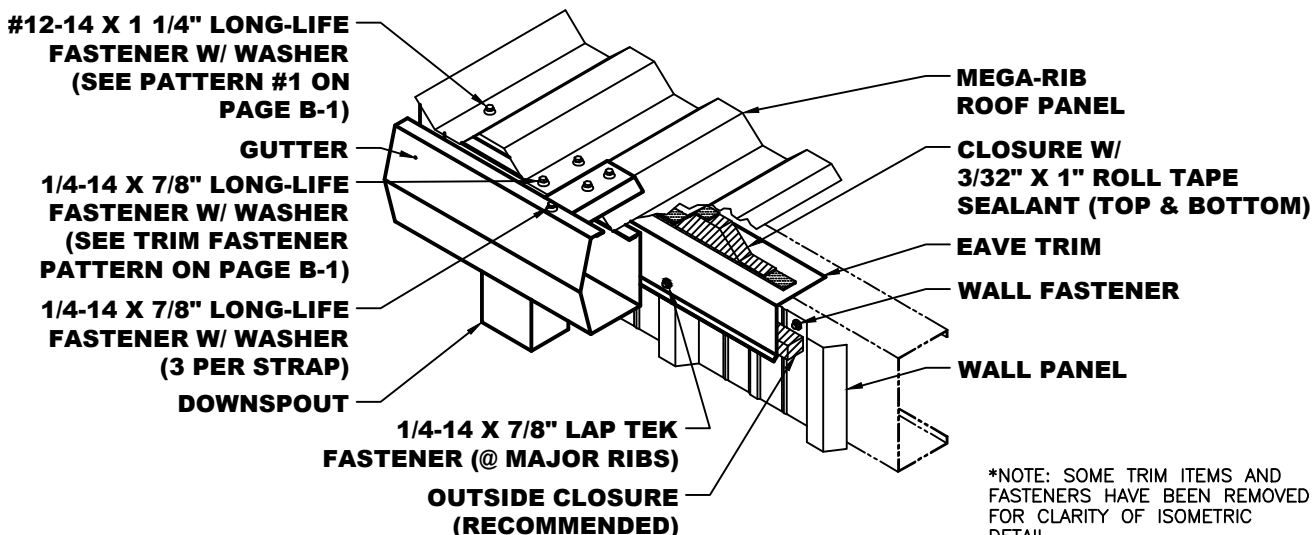
- NOTES:**
1. Eave Trim to run from out of wall to out of wall.
 2. Trim pieces lap 2". Apply 3/32" x 3/8" Butyl Tape Sealant in trim laps and Pop Rivet trims as shown on page C-25.
 3. Apply continuous run of 1/8" x 1 Butyl Tape Sealant on top of Eave Trim..
 4. Set Closures in tape and apply another continuous run of 1/8" x 1" Roll Tape Sealant on top of closures.
 5. Attach Mega-Rib Roof Panels in place and fasten with #12-14 x 1 1/4" Long-Life Fasteners with Washer. See fastener pattern on page B-1.

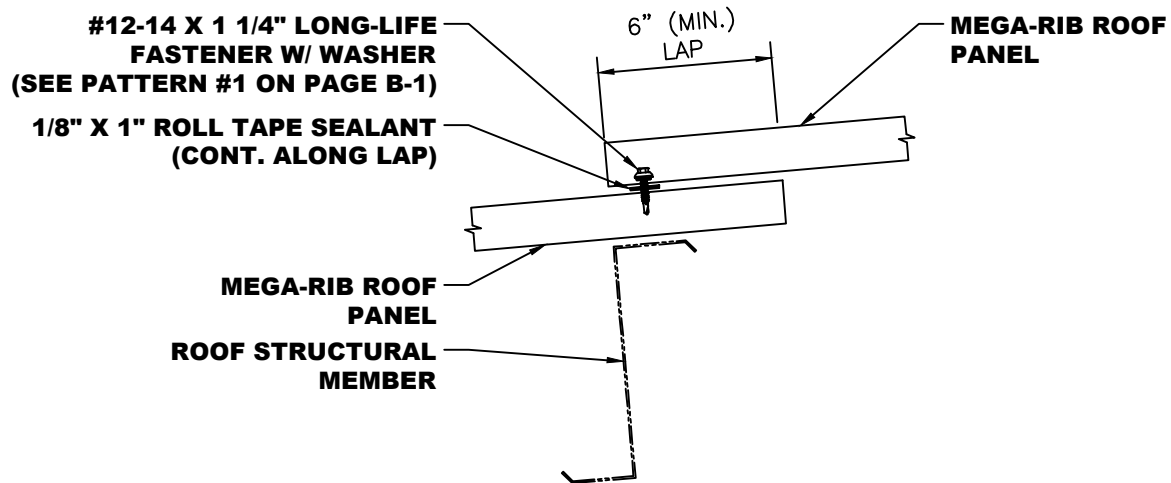


*NOTE: SOME TRIM ITEMS AND FASTENERS HAVE BEEN REMOVED FOR CLARITY OF ISOMETRIC DETAIL.

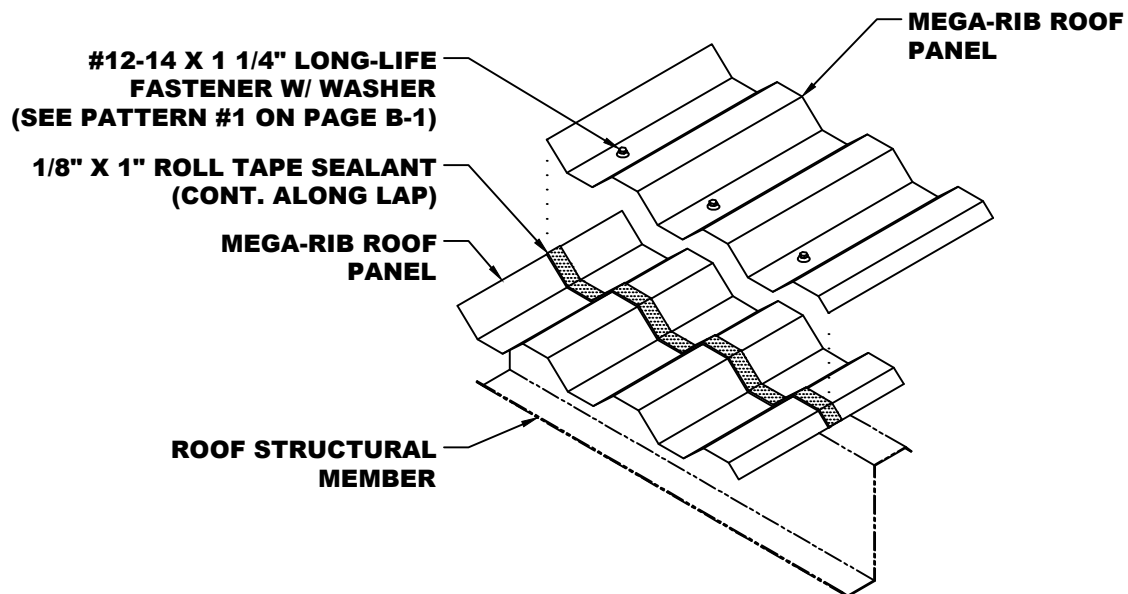


- NOTES:**
1. Eave Trim and Gutter to run from out of wall to out of wall.
 2. Trim pieces lap 2". Apply 3/32" x 3/8" Buytl Tape or Buytl Tube Sealant at trim laps and Pop Rivet trims as shown on page C-25.
 3. Apply continuous run of 1/8" x 1" Roll Tape Sealant on top of Eave Trim.
 4. Set Inside Closures in tape and apply another continuous run of 1/8" x 1" Roll Tape Sealant on top of closures.
 5. Attach Eave Trim to wall panels at major ribs with 1/4-14 x 7/8" Lap Tek fasteners.
 6. Attach Mega-Rib Roof Panels with #12-14 x 1 1/4" Long-Life fasteners with Washer. See fastener pattern on page B-1.
 7. Attach Gutter to roof panel with 1/4-14 x 7/8" Long-Life Fasteners with Washer. (See Trim Fastener Pattern on page B-1) Attach Gutter Straps to panel ribs with (2) 1/4-14 x 7/8" Long-Life Fastener with Washer. Then attach Gutter to Gutter Strap with (1) 1/4-14 x 7/8" Long-Life Fasteners with Washer.

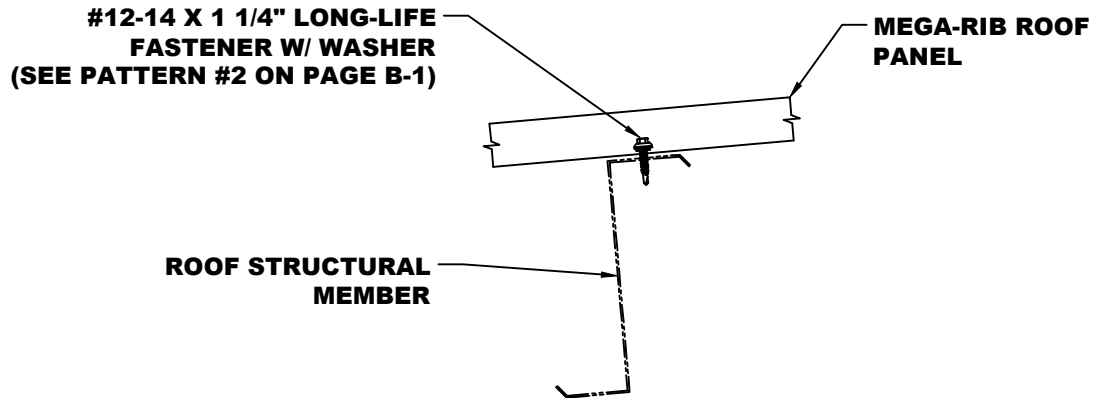




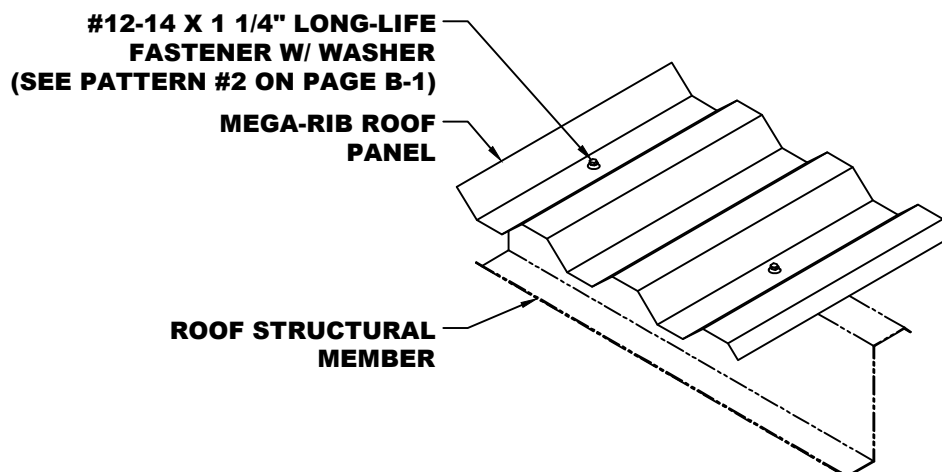
- NOTES:**
1. Extend lower Mega-Rib Roof Panel 6" past web of Roof Structural Member.
 2. Apply continuous run of 1/8" x 1" Roll Tape Sealant on top of lower Mega-Rib panel 5 3/4" down from end of panel.
 3. Install upper Mega-Rib panel and fasten with #12-14 x 1 1/4" Long-Life Fasteners with Washer. See fastener pattern #1 on page B-1.



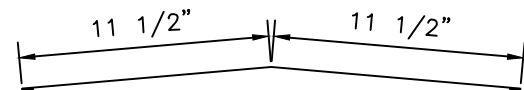
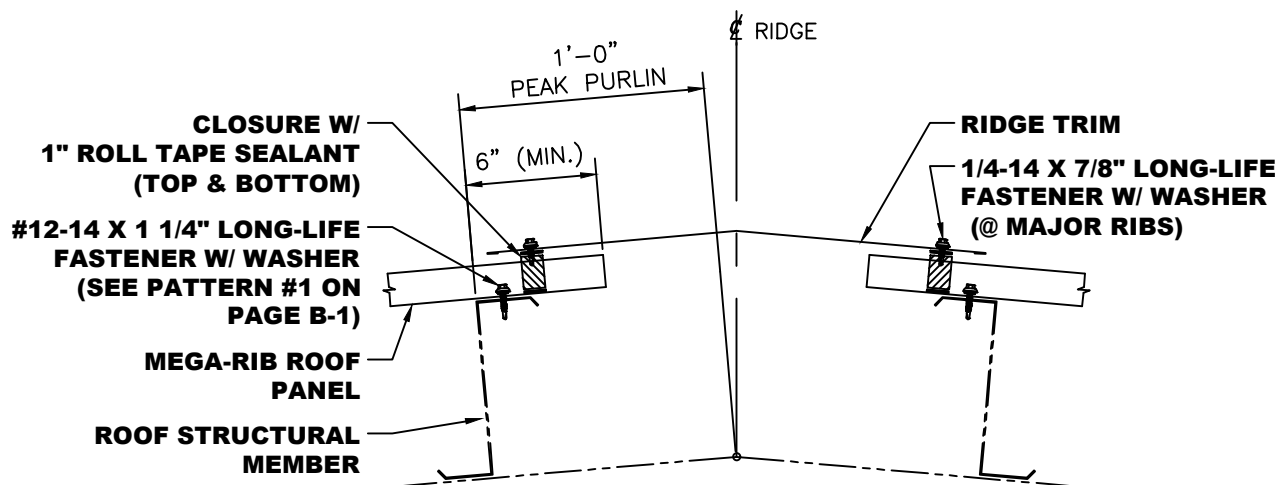
*NOTE: SOME TRIM ITEMS AND FASTENERS HAVE BEEN REMOVED FOR CLARITY OF ISOMETRIC DETAIL.



NOTES: 1. Attach Mega-Rib Roof Panels with #12-14 x 1 1/4" Long-Life Fasteners with Washer. See Fastener Pattern #2 on page B-1.

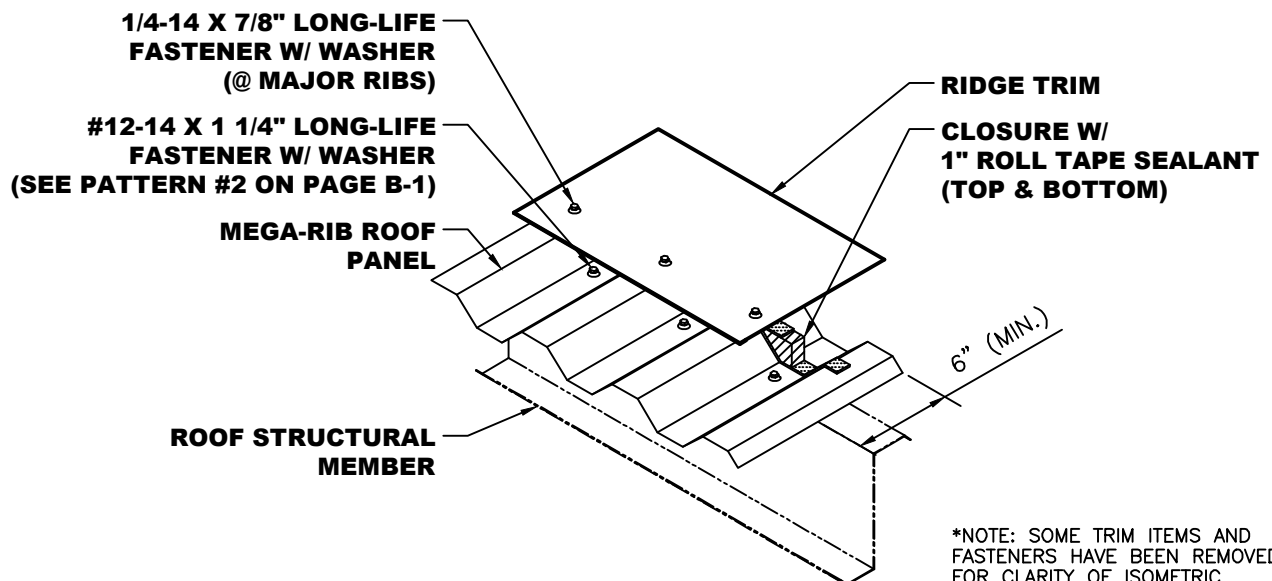


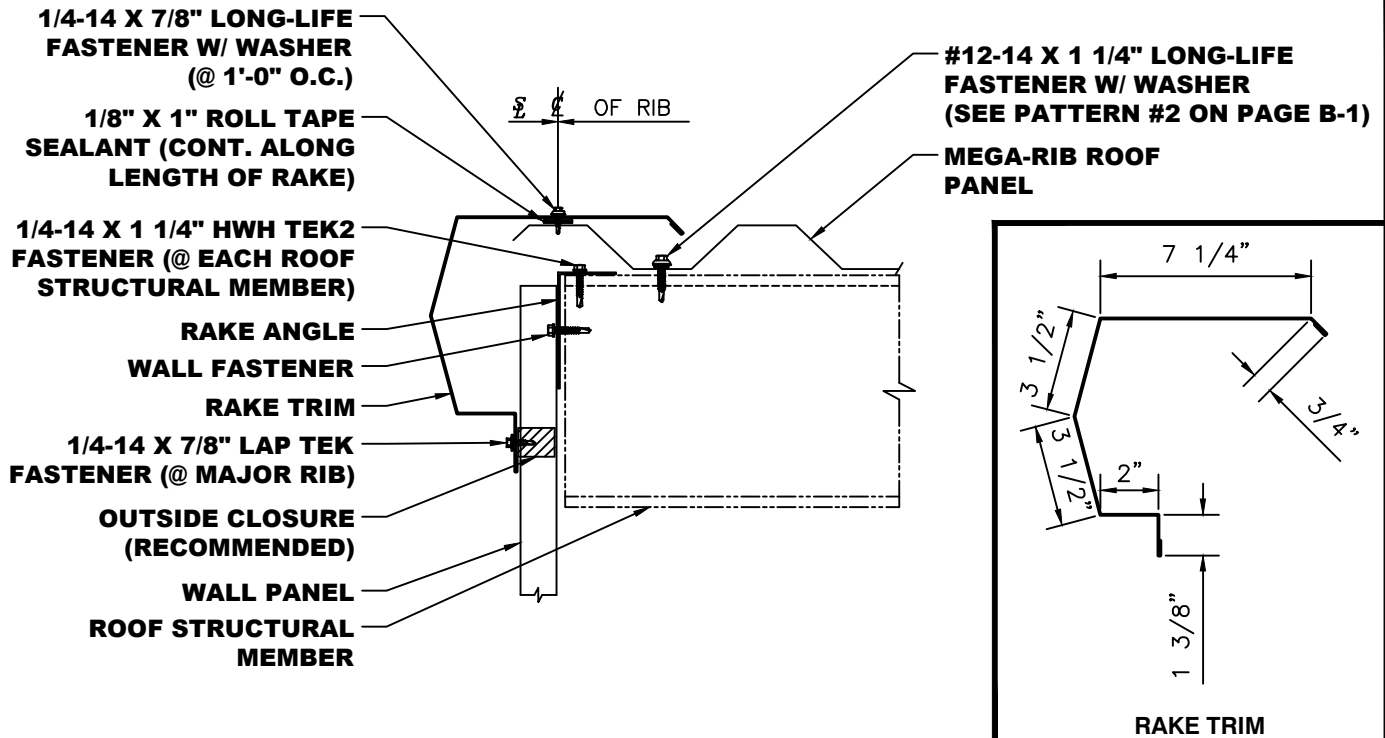
*NOTE: SOME TRIM ITEMS AND FASTENERS HAVE BEEN REMOVED FOR CLARITY OF ISOMETRIC DETAIL.



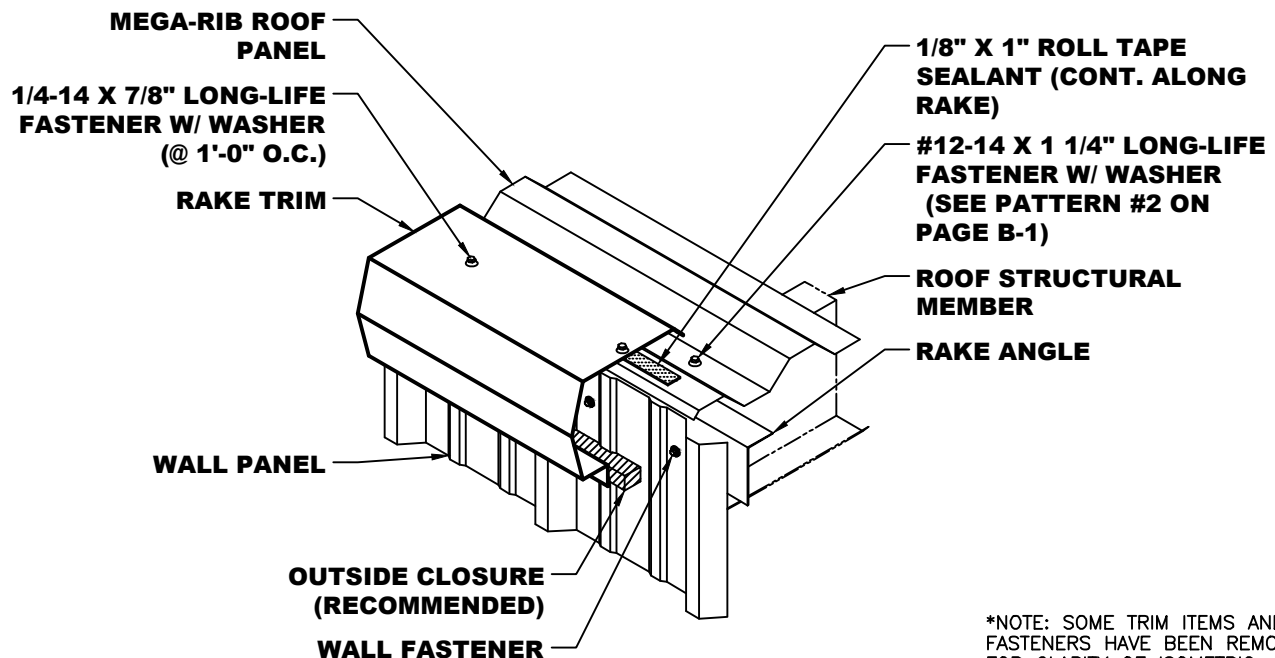
RIDGE TRIM

- NOTES:**
1. Attach Mega-Rib Roof Panels with #12-14 x 1 1/4" Long-Life Fasteners with Washer. See fastener pattern #1 on page B-1.
 2. Install a continuous line of 1/8" x 1" Buytl Tape Sealant above fasteners. Seat Outside Closures in tape sealant. Install another continuous line of 1/8" x 1" Tape Sealant on top of closures.
 3. Attach Ridge Trim to roof panels with 1/4-14 x 7/8" Long-Life Fasteners with Washer at every rib. Make sure fastener penetrates sealant.
 4. Trim pieces lap 2". Apply 3/32" x 3/8" Buytl Tape or Buytl Tube Sealant at trim laps and secure trim joint with 1/4-14 x 7/8" Long-Life Fasteners with Washer at 4" O.C.

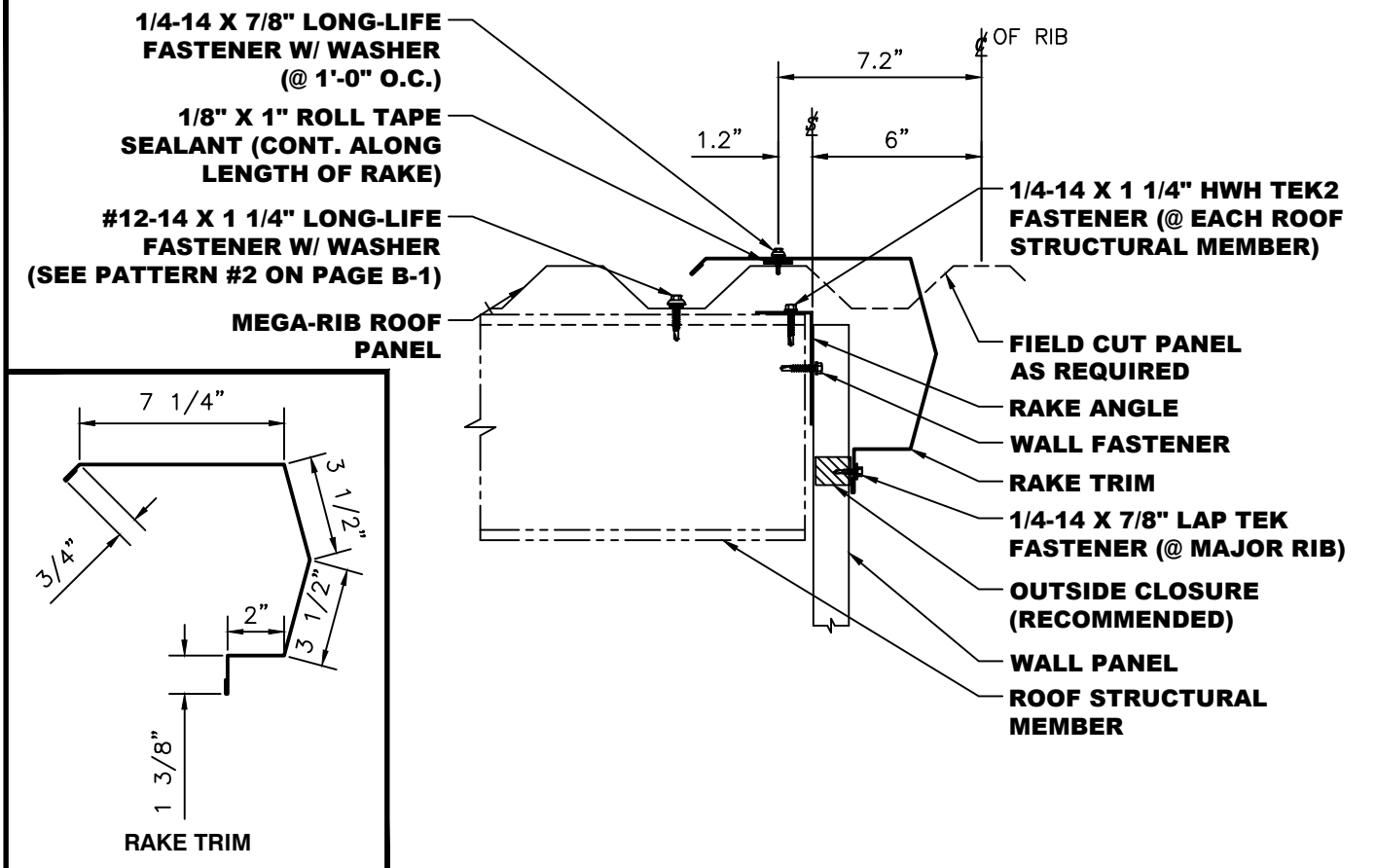




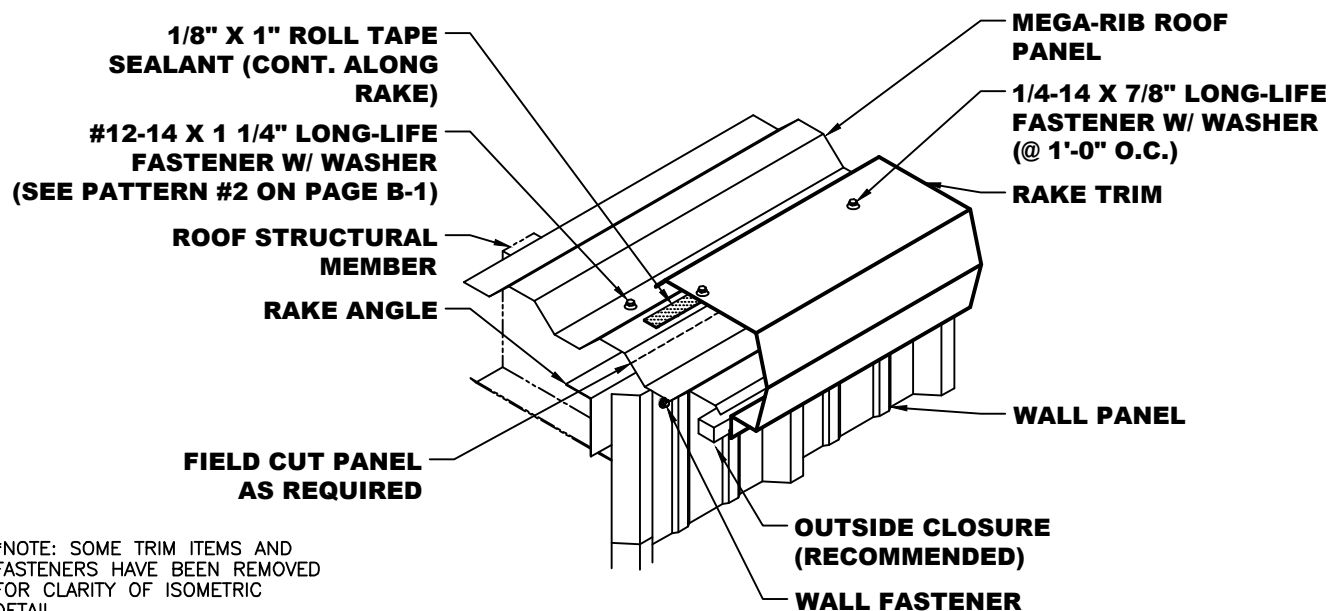
- NOTES:**
1. Attach Mega-Rib Roof Panels with #12-14 x 1 1/4" Long-Life Fasteners with Washer. See fastener pattern #2 on page B-1.
 2. Install a continuous line of 1/8" x 1" Buytl Tape Sealant to top of outside rib of panel.
 3. Attach Rake Trim to roof panels with 1/4-14 x 7/8" Long-Life Fasteners with Washer at 1'-0" O.C. Make sure fastener penetrates sealant.
 4. Trim pieces lap 2". Apply 3/32" x 3/8" Buytl Tape or Buytl Tube Sealant at trim laps and secure trim joint with 1/4-14 x 7/8" Long-Life Fasteners with Washer at 4" O.C.



*NOTE: SOME TRIM ITEMS AND FASTENERS HAVE BEEN REMOVED FOR CLARITY OF ISOMETRIC DETAIL.



- NOTES:**
1. Attach Mega-Rib Roof Panels with #12-14 x 1 1/4" Long-Life Fasteners with Washer. See fastener pattern #2 on page B-1. Field cut panel overhang as required.
 2. Install a continuous line of 1/8" x 1" Butyl Tape Sealant to top of outside rib of panel.
 3. Attach Rake Trim to roof panels with 1/4-14 x 7/8" Long-Life Fasteners with Washer at 1'-0" O.C. Make sure fastener penetrates sealant.
 4. Trim pieces lap 2". Apply 3/32" x 3/8" Butyl Tape or Butyl Tube Sealant at trim laps and secure trim joint with 1/4-14 x 7/8" Long-Life Fasteners with Washer at 4" O.C.

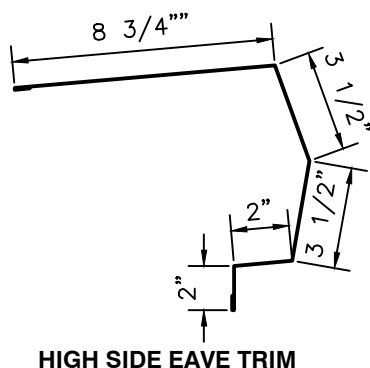


*NOTE: SOME TRIM ITEMS AND FASTENERS HAVE BEEN REMOVED FOR CLARITY OF ISOMETRIC DETAIL.

**OUTSIDE CLOSURE W/
1" ROLL TAPE SEALANT
(TOP & BOTTOM)**

**MEGA-RIB ROOF
PANEL**

**EAVE STRUCTURAL
MEMBER**



HIGH SIDE EAVE TRIM

**1/4-14 X 7/8" LONG-LIFE
FASTENER W/ WASHER
(@ MAJOR RIBS)**

**#12-14 X 1 1/4" LONG-LIFE
FASTENER W/ WASHER
(SEE PATTERN #1 ON PAGE B-1)**

**HIGH-SIDE
EAVE TRIM**

WALL FASTENER

**1/4-14 X 7/8" LAP TEK
FASTENER (@ MAJOR RIBS)**

**OUTSIDE CLOSURE
(RECOMMENDED)**

WALL PANEL

- NOTES:**
1. Attach Mega-Rib Roof Panels with #12-14 x 1 1/4" Long-Life Fasteners with Washer. See fastener pattern #1 on page B-1.
 2. Install a continuous line of 1/8" x 1" Butyl Tape Sealant below fasteners. Seat Outside Closures in tape sealant. Install another continuous line of 1/8" x 1" Butyl Tape Sealant on top of closures.
 3. Attach High-Side Eave Trim to roof panels with 1/4-14 x 7/8" Long-Life Fasteners with Washer at every rib. Make sure fastener penetrates sealant.
 4. Trim pieces lap 2". Apply 3/32" x 3/8" Butyl Tape or Butyl Tube Sealant at trim laps and secure trim joint with 1/4-14 x 7/8" Long-Life Fasteners with Washer at 4" O.C.

**1/4-14 X 7/8" LONG-LIFE
FASTENER W/ WASHER
(@ MAJOR RIBS)**

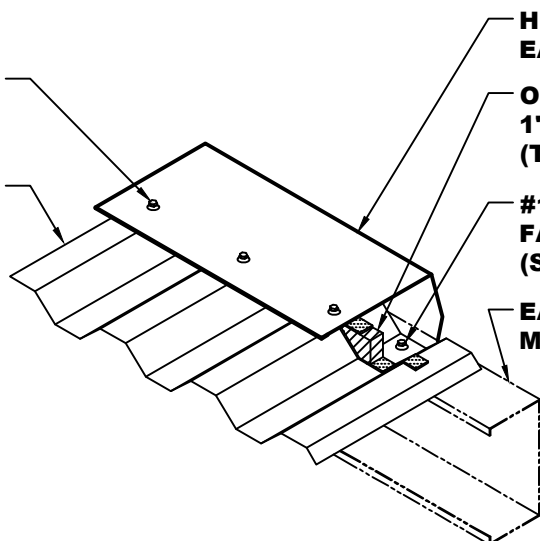
**MEGA-RIB ROOF
PANEL**

**HIGH-SIDE
EAVE TRIM**

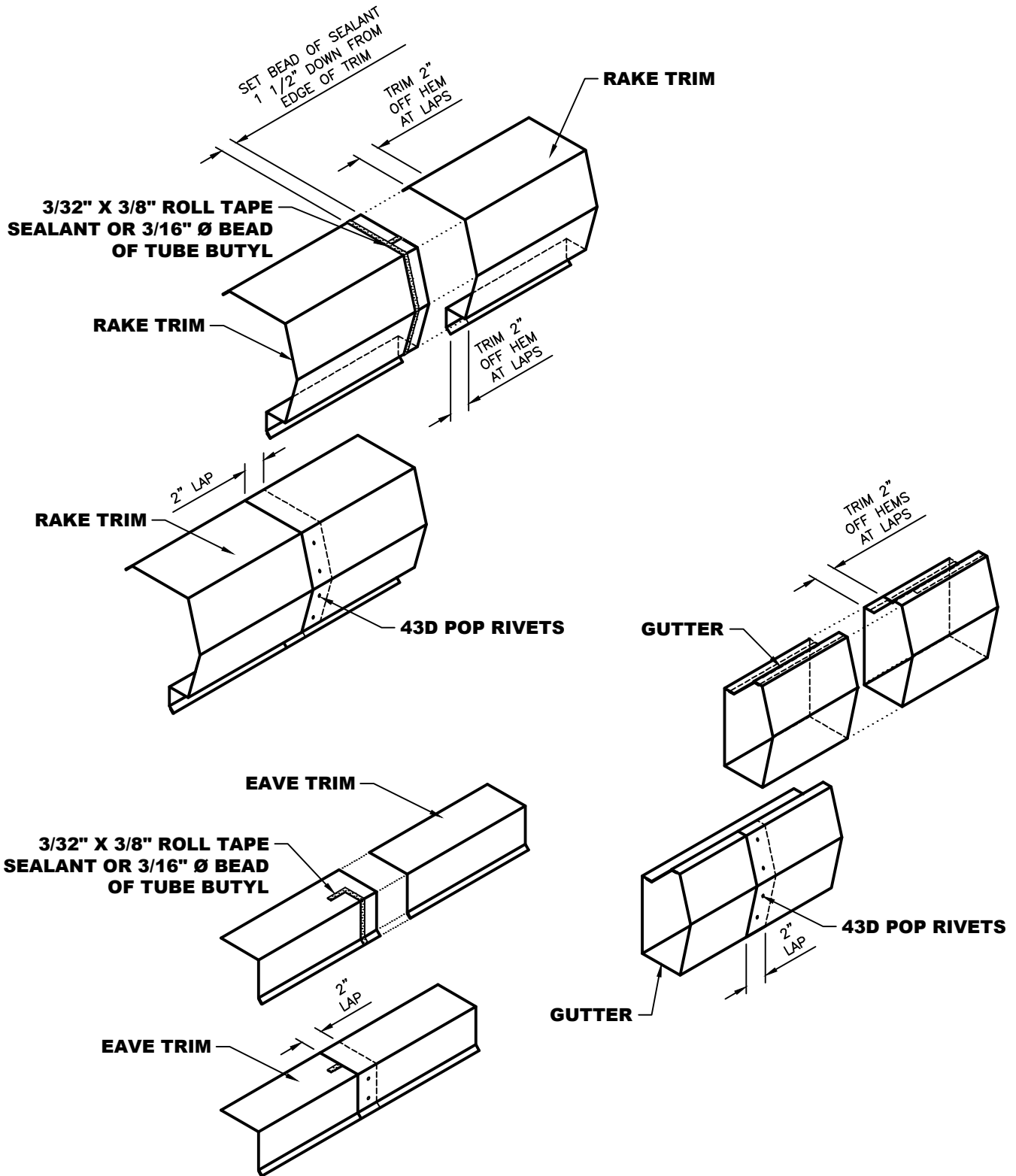
**OUTSIDE CLOSURE W/
1" ROLL TAPE SEALANT
(TOP & BOTTOM)**

**#12-14 X 1 1/4" LONG-LIFE
FASTENER W/ WASHER
(SEE PATTERN #1 ON PAGE B-1)**

**EAVE STRUCTURAL
MEMBER**



*NOTE: SOME TRIM ITEMS AND
FASTENERS HAVE BEEN REMOVED
FOR CLARITY OF ISOMETRIC
DETAIL.



NOTE: 1. Apply 3/32" x 3/8" Roll Tape Sealant or a 3/16" Ø bead of Tube Butyl 1 1/2" back from the edge of the trim. Also, apply a piece of tape sealant or bead of Tube Butyl as a Pigtail to completely seal joint.
 2. Notch the hems on the upper trim piece 2" so that the trim will fit flat in the lap joint.
 3. Secure trim laps with Pop Rivets as shown above.



☆ MANUFACTURING LOCATIONS ● SERVICE CENTERS ★ MANUFACTURING AND SERVICE CENTER



CORPORATE OFFICE
1500 HAMILTON RD.
BOSSIER CITY, LA 71111

MANUFACTURING LOCATIONS

ADELANTO, CA	ASHBURN, GA	BOSSIER CITY, LA	CLINTON, IL	DIAMOND, MO
HOUSTON, TX	LEWISPORT, KY	LOCKHART, TX	MARSHALL, MI	MAUSTON, WI
MERKEL, TX	PEACHTREE CITY, GA	SUNNYVALE, TX	WINCHESTER, VA	

McELROY METAL
SERVICE
CENTER
EMPLOYEE OWNED

17031 Koala Road
Adelanto, CA 92301

3052 Yadkin Road
Chesapeake, VA 23323

409 Lovejoy Road
Ft. Walton Beach, FL 32548

32 Industrial Circle
Lancaster, PA 17601

5123 Terminal Dr.
McFarland, WI 53558

8511 Industrial Drive
Pearland, TX 77584

1365 Dean Forest Rd.
Savannah, GA 31405

5215 Leo St.
Alexandria, LA 71301

9476 Meadowbrook Rd.
Clinton, IL 61727

3014 Lincoln Court
Garland, TX 75041

9435 US Hwy. 60 W.
Lewisport, KY 42351

514 Cave Road
Nashville, TN 37210

2755 Hwy 60
Pendergrass, GA 30567

7355 Oakley Industrial Blvd.
Union City, GA 30291

1007 Wilso Dr,
Baltimore, MD 21223

3215 Highway 59
Diamond, MO 64840

1440 Aldine Bender Road
Houston, TX 77032

2701 Cahill Street
Lockhart, TX 78644

8304 Hwy. 70 E.
North Little Rock, AR 72117

7450 Tower Street
Richland Hills, TX 76118

1144 Silstar Rd.
West Columbia, SC 29170

1500 Hamilton Rd.
Bossier City, LA 71111

390 N. Valley Dell Dr.
Fenton, MO 63026

10504 E. 59th Street
Indianapolis, IN 46236

1020 Veterans Street
Mauston, WI 53948

613 North Bierdeman Rd.
Pearl, MS 39208

8200 Berry Ave. Suite 100
Sacramento, CA 95828

325 McGhee Rd.
Winchester, VA 22603

Website: www.mcelroymetal.com • E-mail: info@mcelroymetal.com