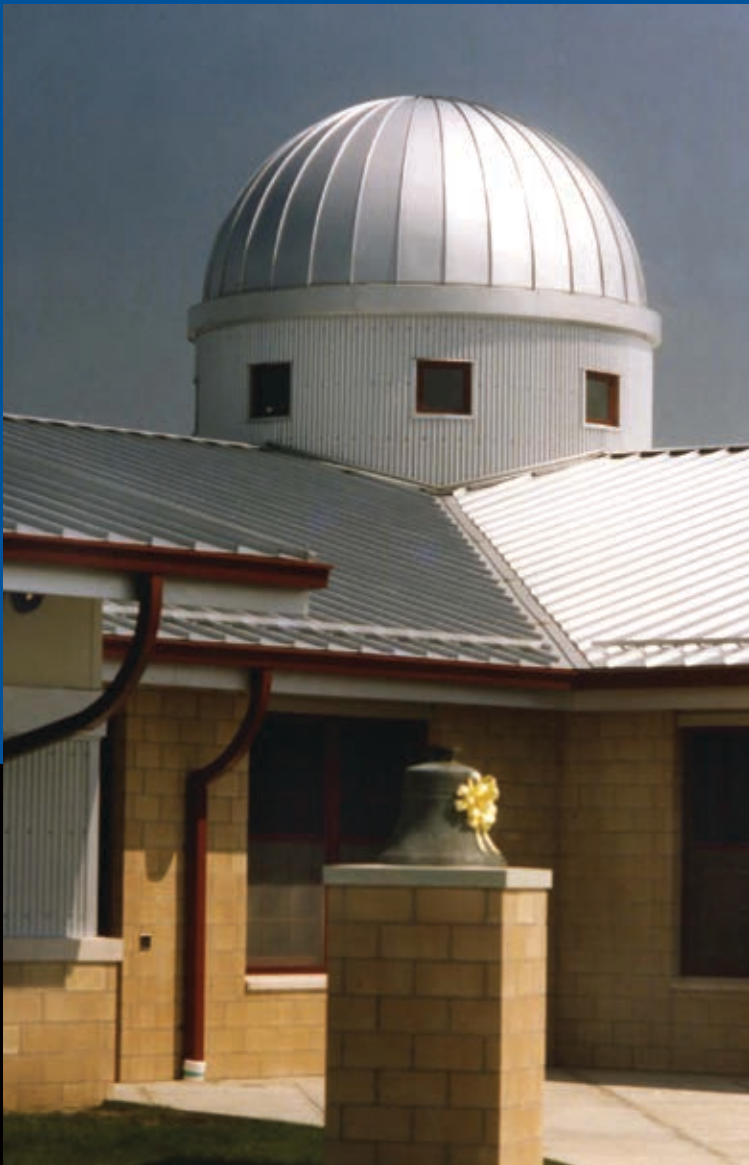




GALVALUME®

***McElroy's Superior Performance Substrate
– Proven in Three Decades of Service.***

McElroy manufactures the industry's finest, and it all starts with Galvalume

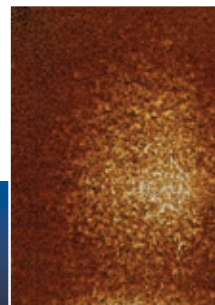


Galvalume®'s Superior Corrosion Resistance Means

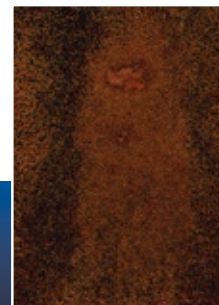
Long Term Durability

Galvalume's superior performance has been proven in the field. Over three decades of testing (one test ran for 20+ years) has shown that Galvalume delivers superior corrosion resistance compared to Galvanized panels. In fact, Galvalume's performance in the construction industry has been so superior, that steel mills warranty it against rupture, perforation, or failure due to corrosion. Similar warranties do not exist for Galvanized.

MODERATE MARINE
Galvanized G90



RURAL
Galvanized G90



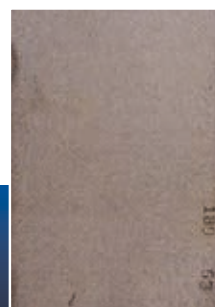
Galvanized (1 mil coating) G90 panels show complete red rust after 18 years at both marine and rural sites.

Long Term Testing

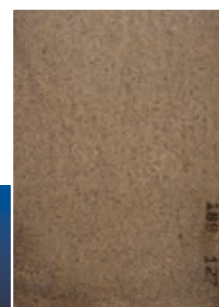
In one test, unpainted Galvalume and Galvanized panels were placed in four different types of outdoor environments, including normal marine and a rural setting. The harsher the surroundings, the better Galvalume performed. After 23 years of side-by-side comparison in all areas, Galvalume was two to four times more durable than Galvanized.*

*Tests conducted by Bethlehem Steel Corp, now a part of the Mittel Steel Co.

MODERATE MARINE
Galvalume Sheet



RURAL
Galvalume Sheet

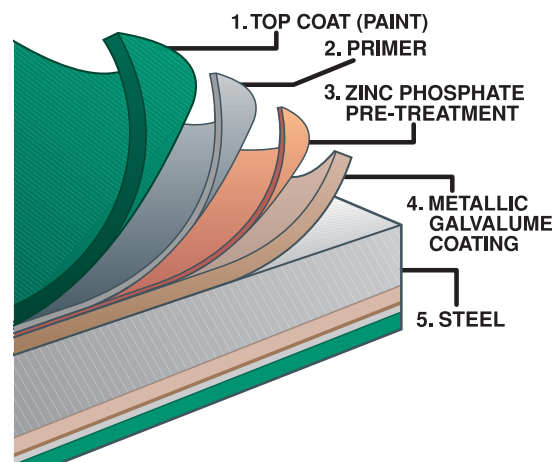


Galvalume (1 mil coating) panels continue to perform well in the marine and rural sites after 23 years.

The Benefits of Aluminum and Zinc

A patented alloy of barrier-resistant aluminum and corrosion-fighting zinc gives Galvalume its superior corrosion resistance. Most Galvalume substrates feature an alloy that is 55% aluminum, 43.5% zinc and 1.5% silicon. Tests have proven this alloy superior to the zinc-only coating used in regular Galvanized sheeting.

Time has proven that Galvalume steel roofs last longer, require less maintenance, and offer exceptional value. It's this combination that has made Galvalume steel roofing the ideal alternative to traditional non-metallic roof systems. In fact, Galvalume steel roofing now totals over 40 billion square feet worldwide, covering buildings of almost every type.



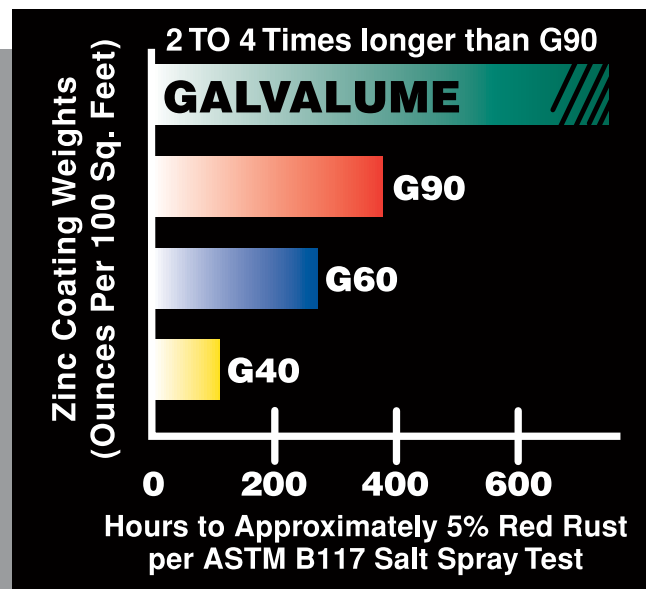
ns Every Application Looks Better, Lasts Longer!

Know your Numbers

Galvanized panels remain a popular substrate for metal roofing and siding. The grades of Galvanized correspond directly to anticipated field longevity.

With Galvanized substrates, the more zinc the better. These "G" numbers indicate how many ounces of zinc are applied to each 100 sq. feet of paneling. G60 has 60 ounces, G90 has 90 ounces and therefore provides better corrosion resistance. McElroy's G100 will have 66% more zinc than G60. These numbers correlate directly into increased longevity and long-term aesthetics of the project.

The corrosion measured in the test's chart (right) is commonly called "red rust." The amount of time it takes for each type of steel panel to acquire 5% red rust can be compared in the graph. The test was conducted with a salt spray to force corrosion so elapsed time could be accurately measured. Note how the higher-zinc panels outperformed the lower. **Also note how Galvalume outperformed them all.**



Galvalume Paint Systems

McElroy offers a choice of paint systems for its top-of-the-line products featuring Galvalume substrate – Silicone Modified Polyester (SMP) and Kynar 500® coatings.

For long-life projects, specify Kynar 500 PVDF coating because of its long-term protection against surface fading and chalking. When steel and paint companies conduct coating tests, Kynar 500 consistently ranks highest in the performance results.

Metal panels using bare or acrylic-coated Galvalume substrates often exhibit noticeable color variations from panel to panel. If a uniform appearance is critical to the end user, a painted product is recommended.



Both Kynar 500 (PVDF) and Silicone Modified Polyester (SMP) panels were installed on this Louisiana residence pictured above. On day one, colors were identical. Less than 8 years later, the Silicone Modified Polyester (SMP) panel shows fading and chalking. Note, no fade or chalking of the darker Kynar 500 (PVDF) panels.

Galvalume® Substrate is the Heart of McElroy's Best – And Best for All Long-Life Applications.



Don't just take our word for it.

For more information about McElroy Metal products utilizing Galvalume steel substrate, ask your McElroy representative, or log on to www.mcelroymetal.com/galvalume. Our site contains additional information, plus valuable links to other Galvalume sites.

Incompatibilities

For the finest, long-term service, Galvalume sheets should not be configured in direct contact with incompatible materials, including but not limited to pretreated lumber, concrete, copper, moisture run-off from copper, brass, lead flashing, pencil graphite, green or wet lumber and animal waste. These materials are corrosion accelerants and will shorten Galvalume's project life.



Trusted by professionals throughout America.

Website: www.mcelroymetal.com • E-mail: info@mcelroymetal.com

MM620 REV 4/19