



# Modern-Rib Exposed Fastener Panel



**REGAL WHITE / BRITE WHITE**  
PVDF SMP



**IVORY**  
PVDF & SMP



**LIGHT STONE**  
PVDF & SMP



**EVERGREEN**  
PVDF & SMP



**ROMAN BLUE**  
PVDF & SMP



**SURREY BEIGE**  
PVDF & SMP



**CLAY**  
PVDF & SMP



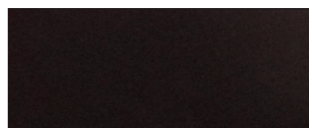
**TERRATONE**  
PVDF & SMP



**ASH GRAY**  
PVDF & SMP



**TUDOR BROWN**  
PVDF & SMP



**PATRICIAN BRONZE**  
PVDF & SMP



**CHARCOAL**  
PVDF & SMP



**MATTE BLACK**  
PVDF & SMP



**AUTUMN RED**  
PVDF & SMP



**BRANDYWINE**  
PVDF & SMP



**HARTFORD GREEN**  
PVDF & SMP



**GALVALUME PLUS**



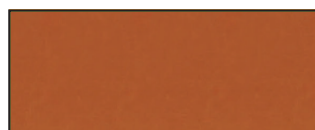
**SEPIA BROWN**  
PVDF



**BRITE RED**  
PVDF



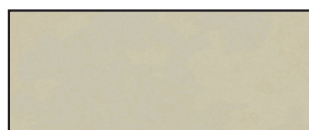
**REGAL BLUE**  
PVDF



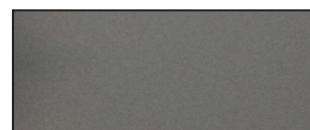
**COPPER PENNY METALLIC**  
PVDF



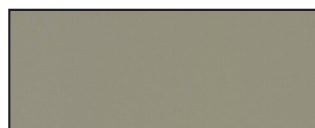
**FOREST GREEN**  
PVDF



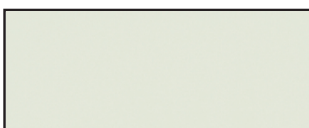
**ALMOND**  
PVDF



**SLATE GRAY**  
PVDF



**TAUPE**  
SMP



**ALAMO WHITE**  
SMP



**ANTIQUE BROWN**  
SMP

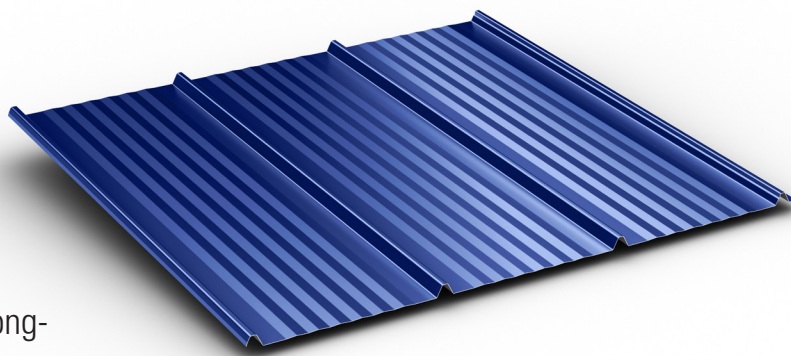


**PEWTER GRAY**  
SMP

<sup>1</sup> Colors shown may vary due to the printed representation. Actual color chips are available from McElroy Metal and McElroy Metal contractors and distributors. <sup>2</sup> 29 gauge Galvalume® is standard. 26 and 24 gauge Galvalume are optional. <sup>3</sup> PVDF indicates Kynar 500® coating - SMP indicates Silicone Modified Polyester Coating. <sup>4</sup> \*Deep tone colors and Metallic colors - additional cost will apply.

Modern-Rib is McElroy Metal's newest panel. Combining the economics of an exposed fastener panel along with major ribs that simulate standing seam panels, Modern-Rib adds beauty and sophisticated styling to residential roofs and post frame structures.

Modern-Rib is available with Silicone Modified Polyester (SMP) and Kynar 500® (PVDF) coatings. For long-term performance and curb appeal, McElroy recommends PVDF coatings.



## Details

- Minimum slope 1:12
- Must be installed over solid deck
- Tape sealant is required in seams (side -laps) on slopes 3:12 to 1:12
- Standard panel lengths up to 40' (Please inquire for longer lengths)

## Manufacturing

- Roll formed in factory

## Panel Options

- Panel width: 36" Cover Width
- Panel configurations: Striated
- **Coating**
  - Kynar 500®
  - Silicone Modified Polyester (SMP)
  - Acrylic Coated Galvalume®
- **Substrate:**
  - Standard 29 gauge Galvalume
  - Optional 26 gauge Galvalume
  - Optional 24 gauge Galvalume

## Testing Data

- Fire Rating: Class A
- Uplift Test: UL 580 Class 90
- Class 4 Impact Resistance UL 2218
- Fire Resistance: UL 263
- For any available Test Data, Section Properties or Load Tables, please visit our download section at: [www.mcelroymetal.com](http://www.mcelroymetal.com)



Oil canning (pan wave) is a natural occurrence in metal panels and is not a cause for panel rejection.

[www.mcelroymetal.com](http://www.mcelroymetal.com) | [info@mcelroymetal.com](mailto:info@mcelroymetal.com)