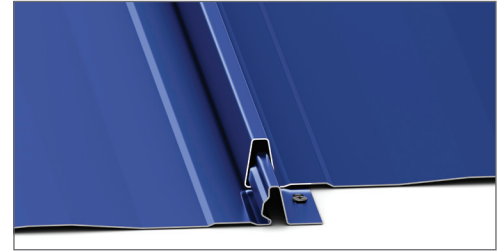
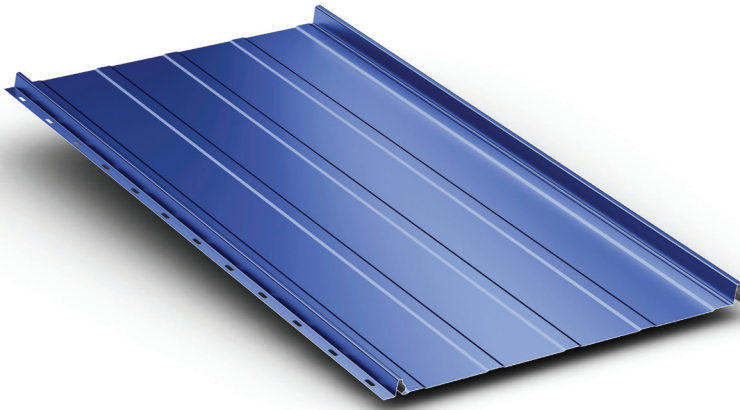


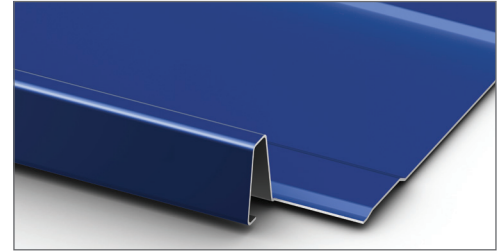
# Installation is a snap

Meridian has it all... An aesthetically pleasing, snap-together, standing seam roof panel that is economical and easy to install. With no need for clips, Meridian panels are simply attached to the roof deck with pancake head fasteners. Equally well-suited for commercial and residential applications, Meridian is always an excellent choice!

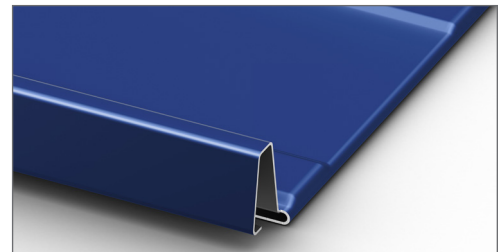




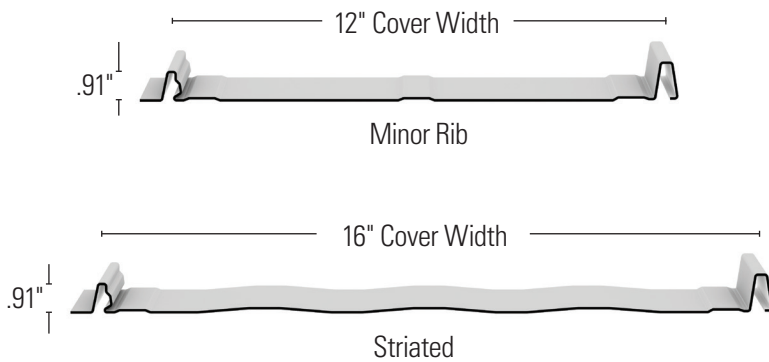
Seam Detail



Factory Eave Notch



Eave Notch Folded in Field



\*12" and 16" both available in minor rib and striated.

## Details

- Factory formed eave notch upon request
- Minimum slope: 3:12
- Must be installed over solid deck
- Oil Canning is a natural occurrence in metal panels and is not cause for panel rejection

**Note:** Meridian manufactured in Sunnyvale, TX features a slightly different lap and should not be mixed with panels from other facilities

## Panel Options

- Panel width: 12" and 16"
- Panel configurations: 16" minor ribs or striated 12" minor ribs or striated
- Coating: Kynar 500® (PVDF)
- Substrate:
  - Standard 26 GA Galvalume® 16" only
  - Standard 24 GA Galvalume 12" and 16"

## Testing Data

- Fire Rating: Class A
- Air Infiltration: ASTM E1680
- Water Infiltration: ASTM E1646
- Class 4 Impact Resistance: UL 2218
- Texas Department of Insurance Approval: Evaluation RC-34
- Florida State Approval: 2358.1
- For any available Test Data, Section Properties or Load Tables, please visit our download section at [www.mcelroymetal.com](http://www.mcelroymetal.com)



Corporate Office  
 1500 Hamilton Rd., Bossier City, LA 71111  
[www.mcelroymetal.com](http://www.mcelroymetal.com) | [info@mcelroymetal.com](mailto:info@mcelroymetal.com)