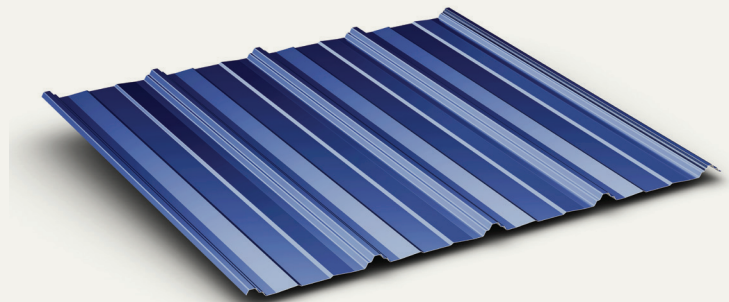




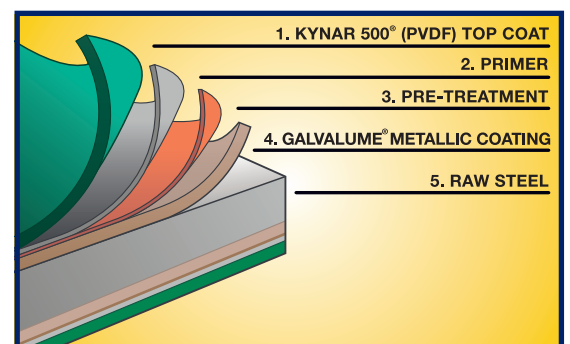
Mesa is a low profile $\frac{3}{4}$ " panel well suited for commercial, agricultural, and residential applications. With copyright and patent protection, Mesa offers unique features over other roof and wall panels and takes Post-Frame construction to a higher level.

Specifics:

- 1:12 Minimum Slope (with sealant)
- Nearly Invisible Lap
- Kynar 500® (PVDF) Paint = Greater Gloss Retention
- Galvalume® Substrate
- Edge Rust Inhibitor
- .015 Thickness = Stronger Panel
- Made in the USA



A good metal panel involves far more than what you can physically see. To deliver the decades long performance that today's savvy customers demand, it's important to choose the best overall system including the substrate, primer and coating. Our Mesa panel delivers on each of those aspects and more!

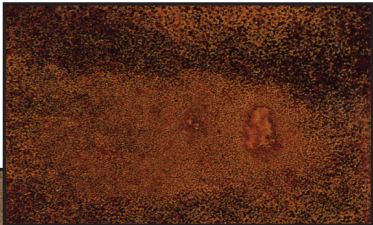


Substrate:

The most popular steel substrates in the metal roofing and siding industry are Galvanized and Galvalume. Galvanized substrates are coated with a zinc alloy, while Galvalume substrates are coated with an alloy of zinc plus aluminum.

The addition of aluminum drastically improves performance to the point that Galvalume offers a 45-year substrate warranty for bare/acrylic products and an unprecedented 50-year substrate warranty for painted products. In stark contrast, Galvanized products offer no substrate warranty. Consequently, we've chosen Galvalume as our standard substrate for the Mesa panel.

To the right: Galvanized test panel covered in red rust after 18 years in a rural environment



To the left: Galvalume test panel shows only moderate edge discoloration after 23 years in the same rural environment



Paint System:

Kynar 500 (PVDF) Coating

Three types of coatings are available for metal panels - Kynar 500 (PVDF) (best), silicone modified polyester (SMP) (better), and polyester (good). Coatings are ranked by their ability to fight fade and chalk as well as their ability to retain gloss.

Kynar 500 (PVDF) is the best for long service life, color retention and chalk resistance. Selecting Kynar 500 (PVDF) means long-lasting "like new" appearance versus other coatings which can begin to degrade and look aged after a few years.



Building addition dramatically illustrates Kynar 500 (PVDF) superior performance. This building was built in two phases, nine years apart. Note, no color difference in the two halves of the roof. No fade! No chalk!



Both Kynar 500 (PVDF) and Silicone Modified Polyester (SMP) panels were installed on this Louisiana residence. On day one, colors were identical. Photo taken less than eight (8) years later shows fading and chalking of the lighter Silicone Modified Polyester (SMP) panels. Note, no fade or chalking of the darker Kynar 500 panels.

Edge-Rust Inhibitor:

A special clear, rust inhibitor is factory-applied to the cut ends of each Mesa panel. This inhibitor minimizes rusting of the exposed edge.



Environmental tests show extensive corrosion along cut end of panel without Edge-Rust Inhibitor.



Minimal corrosion is detected along cut end of panel with Edge-Rust Inhibitor application.

Made in the USA

Foreign steel is very common in the metal panel industry. However, you can rest assure that . . .

Mesa is manufactured from steel made in the USA!



Corporate Office
1500 Hamilton Rd., Bossier City, LA 71111
www.mcelroymetal.com | info@mcelroymetal.com

