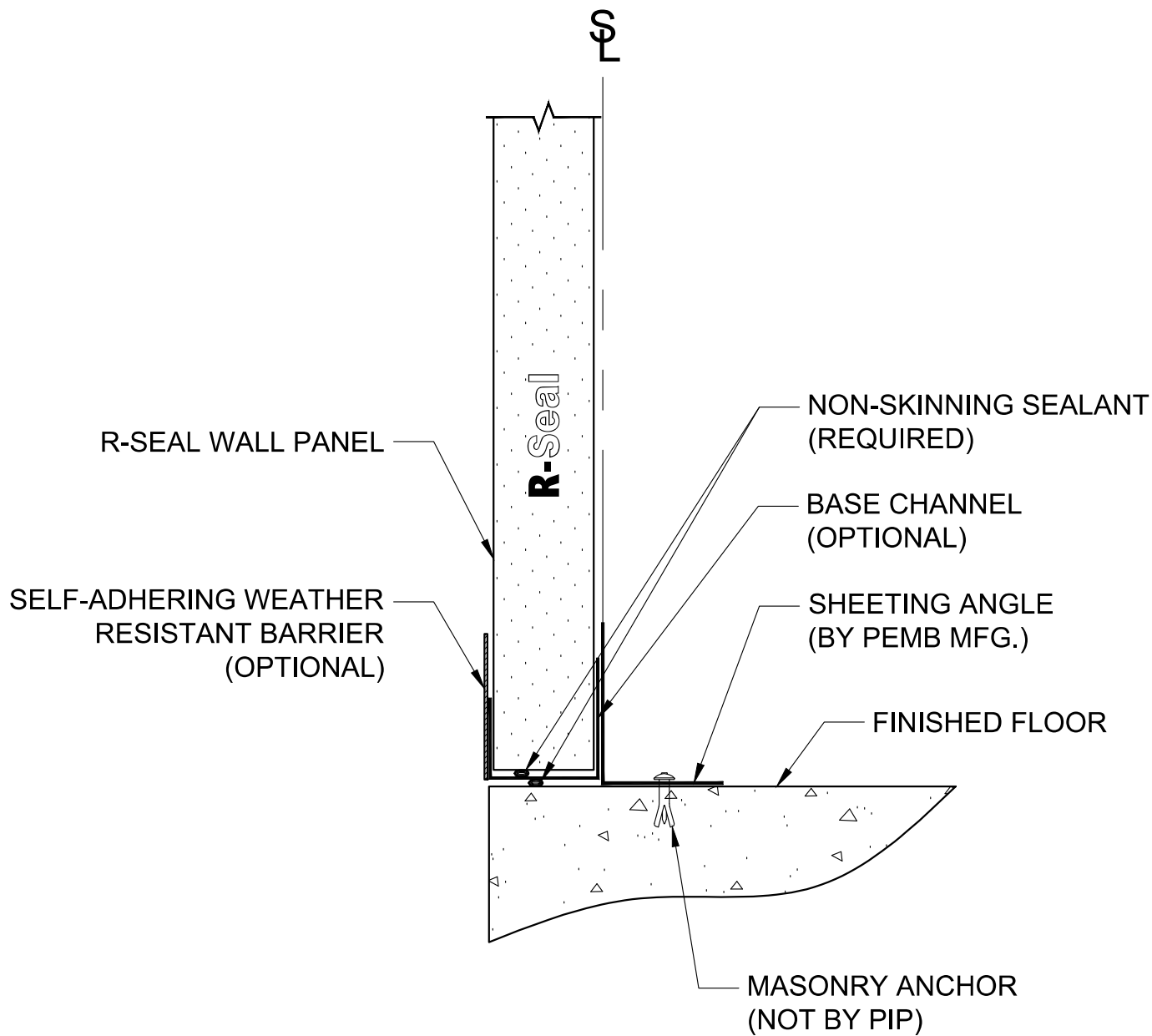


The information contained in this detail and the accompanying material is thought to be reliable and correct, but is subject to change without notice. Pacific Insulation Products assumes no responsibility for engineering or design of any structures or sub-structure, whether such structure contains products manufactured or supplied by Pacific Insulation Products or not. Typical details are meant to show the product to the seller in a manner which is representative of the way in which they are installed. It is the responsibility of the buyer or his/her architect or engineer to verify that any product is suitable for the conditions and use intended and that the products are compatible with any material.

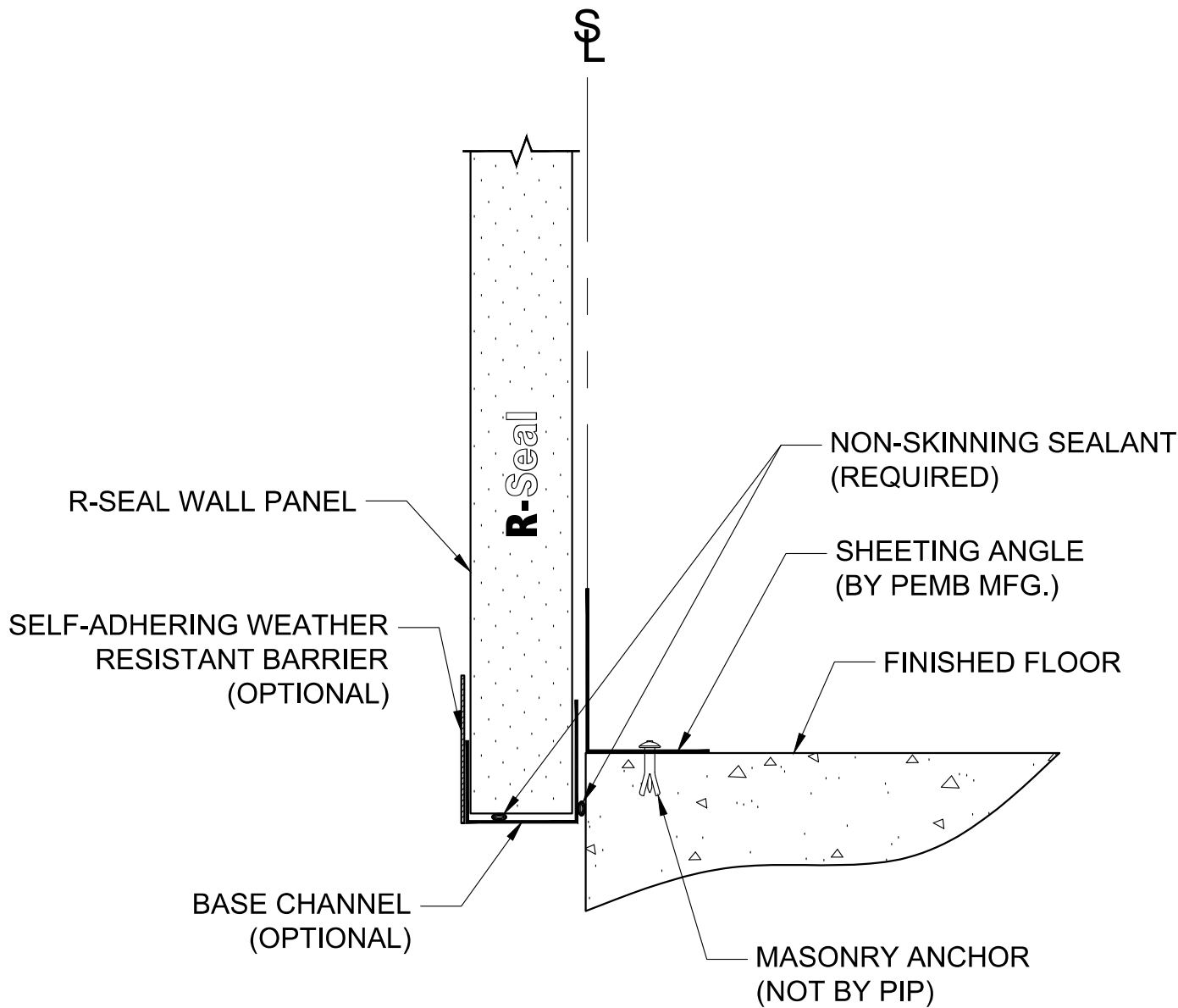
ISSUE:	DWN:	CHK:	ENG:	MFG:	DATE:	<div>R-SEAL</div> <div>MBI EAVE DETAIL</div> <div>OPTION # 3</div>	<div><div>R-SEAL</div><div>Simply Efficient</div></div> <div>PO BOX #250</div> <div>SULTAN, WA 98294</div> <div>877-300-3794</div> <div>SALES@R-SEAL.COM</div>	PAGE: 1 OF 1



The information contained in this detail and the accompanying material is thought to be reliable and correct, but is subject to change without notice. Pacific Insulation Products assumes no responsibility for engineering or design of any structures or sub-structure, weather such structure contains products manufactured or supplied by Pacific Insulation Products or not. Typical details are meant to show the product to the seller in a manner which is representative of the way in which they are installed. It is the responsibility of the buyer or his/her architect or engineer to verify that any product is suitable for the conditions and use intended and that the products are compatible with any material.

ISSUE:	DWN:	CHK:	ENG:	MFG:	DATE:	<div><div>R-SEAL</div><div>Simply Efficient</div></div>	<div>PO BOX #250 SULTAN, WA 98294</div> <div>877-300-3794 SALES@R-SEAL.COM</div>
						STANDARD AIR BARRIER	

PAGE: 1 OF 1



The information contained in this detail and the accompanying material is thought to be reliable and correct, but is subject to change without notice. Pacific Insulation Products assumes no responsibility for engineering or design of any structures or sub-structure, weather such structure contains products manufactured or supplied by Pacific Insulation Products or not. Typical details are meant to show the product to the seller in a manner which is representative of the way in which they are installed. It is the responsibility of the buyer or his/her architect or engineer to verify that any product is suitable for the conditions and use intended and that the products are compatible with any material.

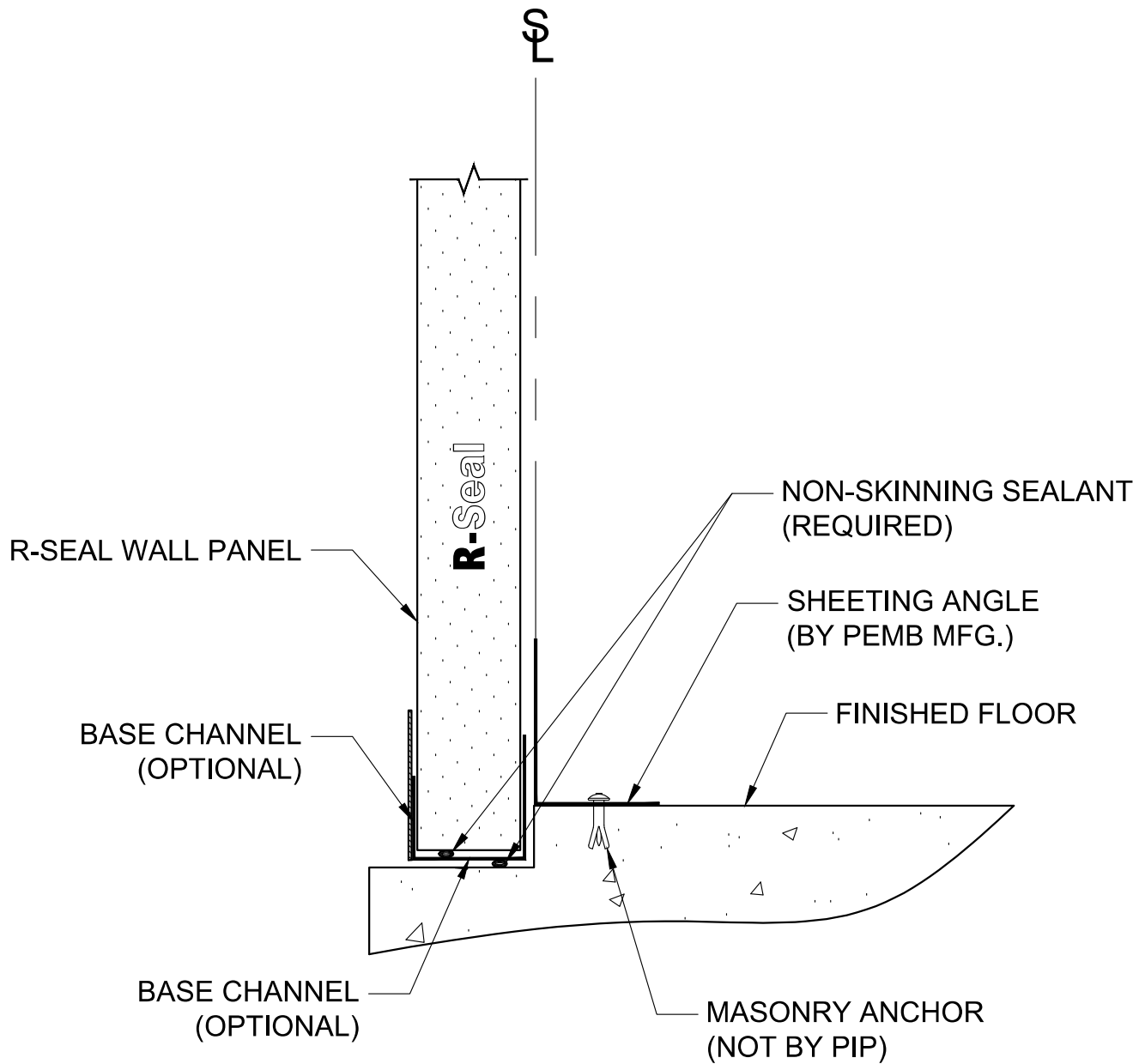
ISSUE:	DWN:	CHK:	ENG:	MFG:	DATE:

*R-SEAL*  
*MBI OFFSET BASE DETAIL*


STANDARD AIR BARRIER

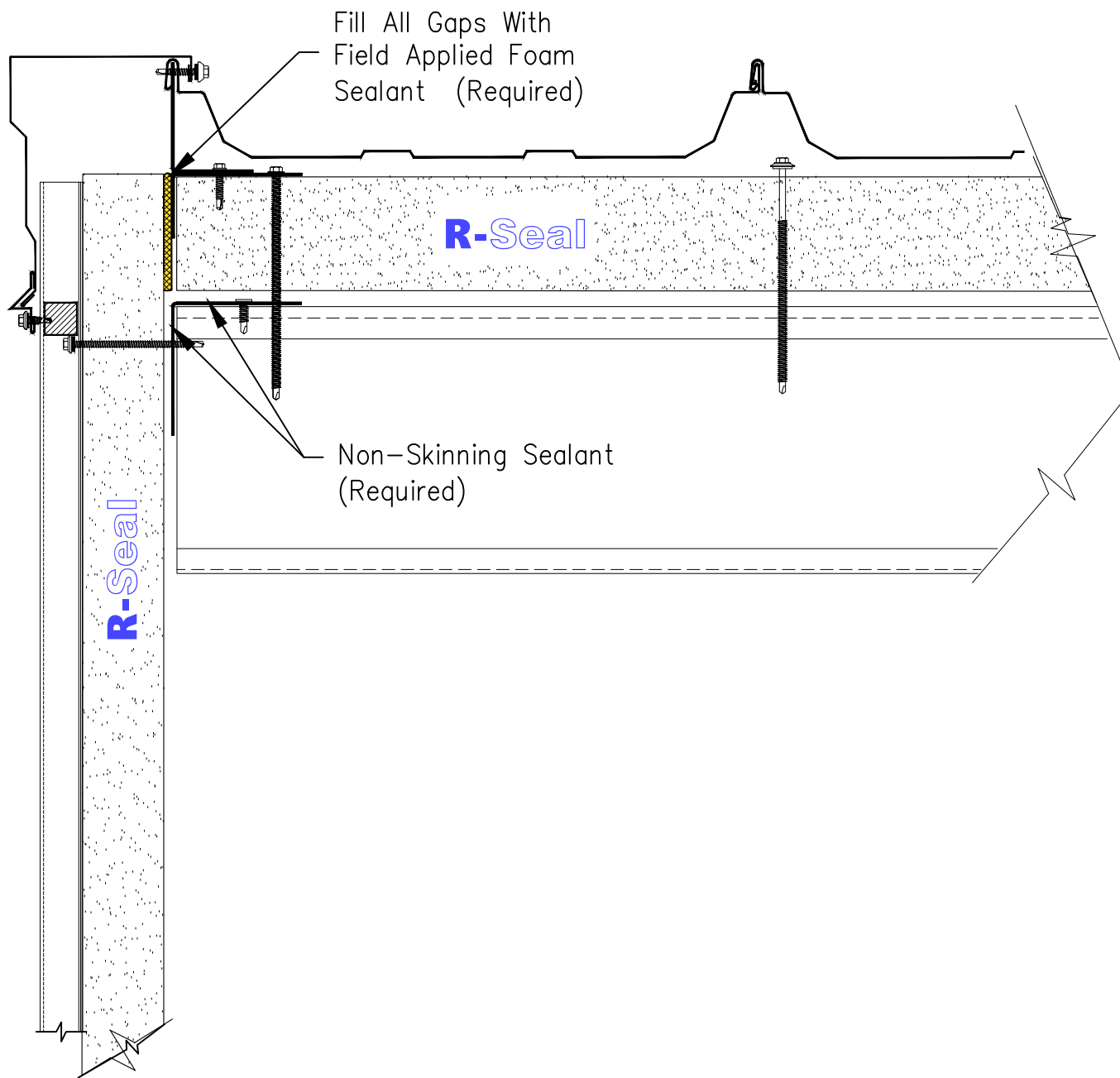


PO BOX #250  
SULTAN, WA 98294  
877-300-3794  
SALES@R-SEAL.COM




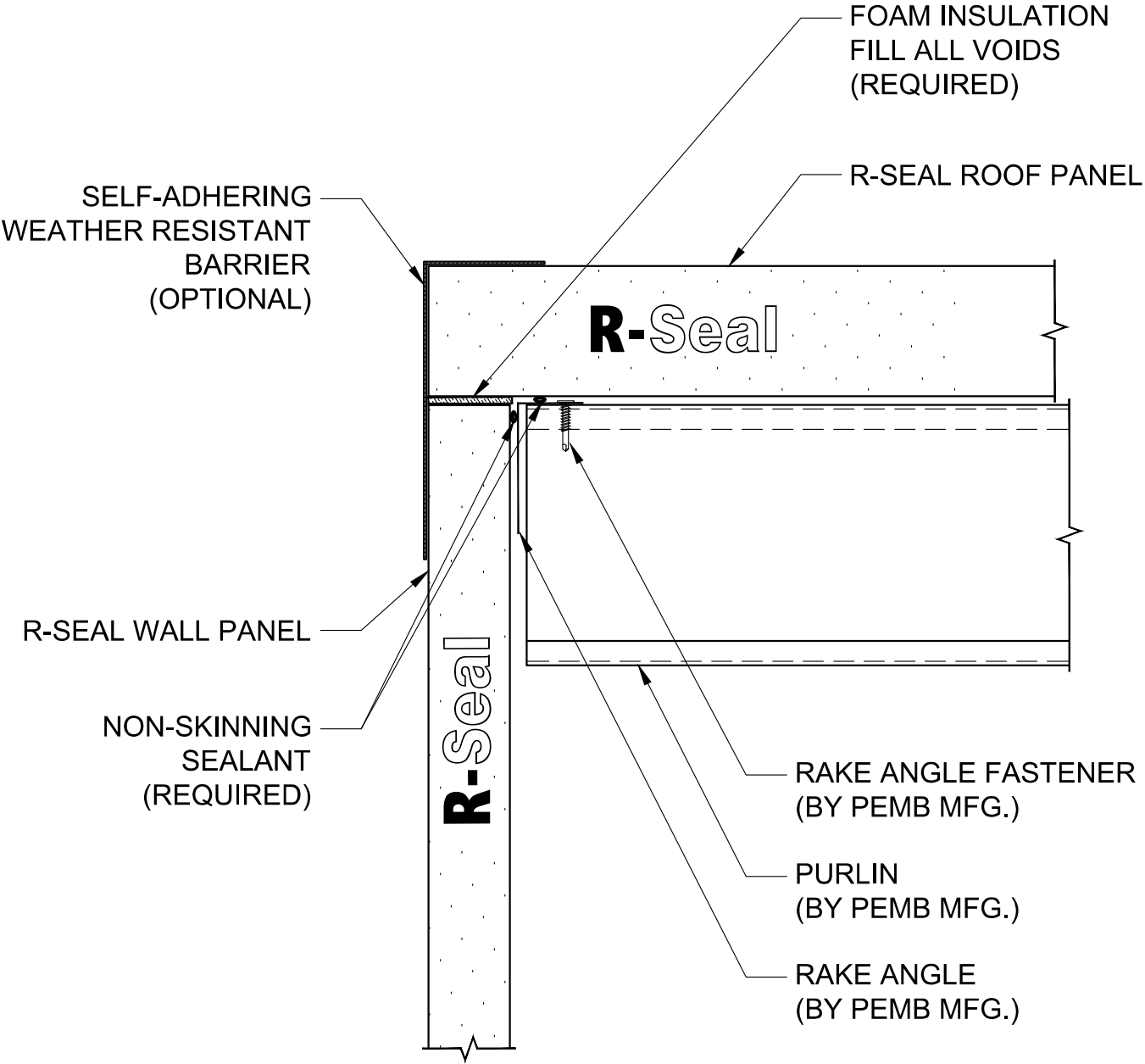
The information contained in this detail and the accompanying material is thought to be reliable and correct, but is subject to change without notice. Pacific Insulation Products assumes no responsibility for engineering or design of any structures or sub-structure, whether such structure contains products manufactured or supplied by Pacific Insulation Products or not. Typical details are meant to show the product to the seller in a manner which is representative of the way in which they are installed. It is the responsibility of the buyer or his/her architect or engineer to verify that any product is suitable for the conditions and use intended and that the products are compatible with any material.

ISSUE:	DWN:	CHK:	ENG:	MFG:	DATE:	R-SEAL MBI PNL NOTCH BASE DETAIL	 <b>Simply Efficient</b>	PO BOX #250 SULTAN, WA 98294  877-300-3794 SALES@R-SEAL.COM	PAGE: 1 OF 1
						STANDARD AIR BARRIER			



The information contained in this detail and the accompanying material is thought to be reliable and correct, but is subject to change without notice. Pacific Insulation Products assumes no responsibility for engineering or design of any structures or sub-structure, whether such structure contains products manufactured or supplied by Pacific Insulation Products or not. Typical details are meant to show the product to the seller in a manner which is representative of the way in which they are installed. It is the responsibility of the buyer or his/her architect or engineer to verify that any product is suitable for the conditions and use intended and that the products are compatible with any material.

ISSUE:	DWN:	CHK:	ENG:	MFG:	DATE:	<div>R-SEAL MBI RAKE DETAIL</div>	<div> Simply Efficient</div>	<div>PO BOX #250 SULTAN, WA 98294  877-300-3794 SALES@R-SEAL.COM</div>	PAGE: 1 OF 1
						<div>STANDARD AIR BARRIER</div>			



The information contained in this detail and the accompanying material is thought to be reliable and correct, but is subject to change without notice. Pacific Insulation Products assumes no responsibility for engineering or design of any structures or sub-structure, whether such structure contains products manufactured or supplied by Pacific Insulation Products or not. Typical details are meant to show the product to the seller in a manner which is representative of the way in which they are installed. It is the responsibility of the buyer or his/her architect or engineer to verify that any product is suitable for the conditions and use intended and that the products are compatible with any material.

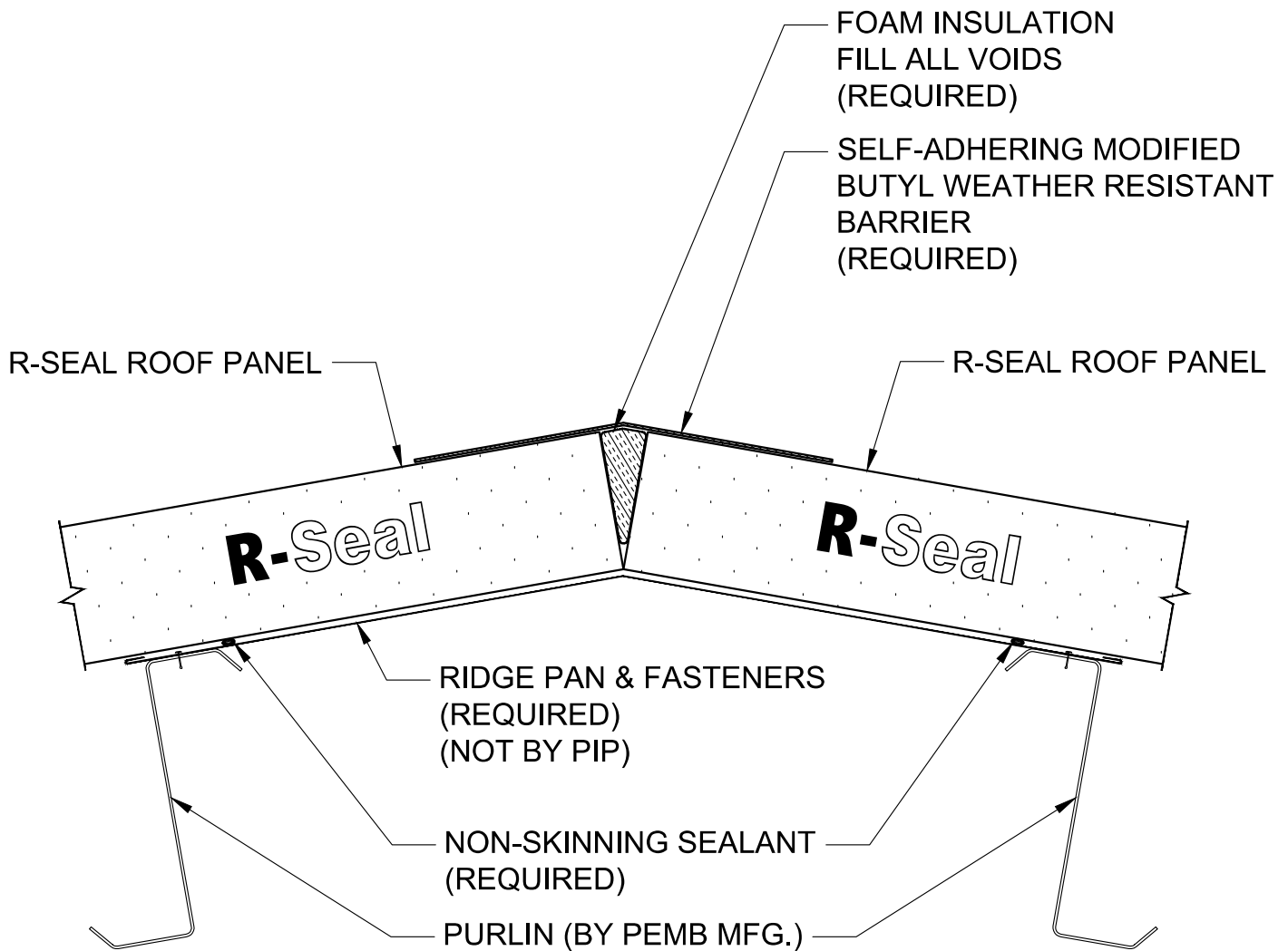
ISSUE:	DWN:	CHK:	ENG:	MFG:	DATE:

R-SEAL  
MBI RAKE DETAIL  
OPTION #2

STANDARD AIR BARRIER



PO BOX #250  
SULTAN, WA 98294  
877-300-3794  
SALES@R-SEAL.COM



The information contained in this detail and the accompanying material is thought to be reliable and correct, but is subject to change without notice. Pacific Insulation Products assumes no responsibility for engineering or design of any structures or sub-structure, whether such structure contains products manufactured or supplied by Pacific Insulation Products or not. Typical details are meant to show the product to the seller in a manner which is representative of the way in which they are installed. It is the responsibility of the buyer or his/her architect or engineer to verify that any product is suitable for the conditions and use intended and that the products are compatible with any material.

ISSUE:	DWN:	CHK:	ENG:	MFG:	DATE:	<div><i>R-SEAL</i></div> <div><i>MBI RIDGE DETAIL</i></div>
						<div><i>STANDARD AIR BARRIER</i></div>

R-SEAL

Simply Efficient

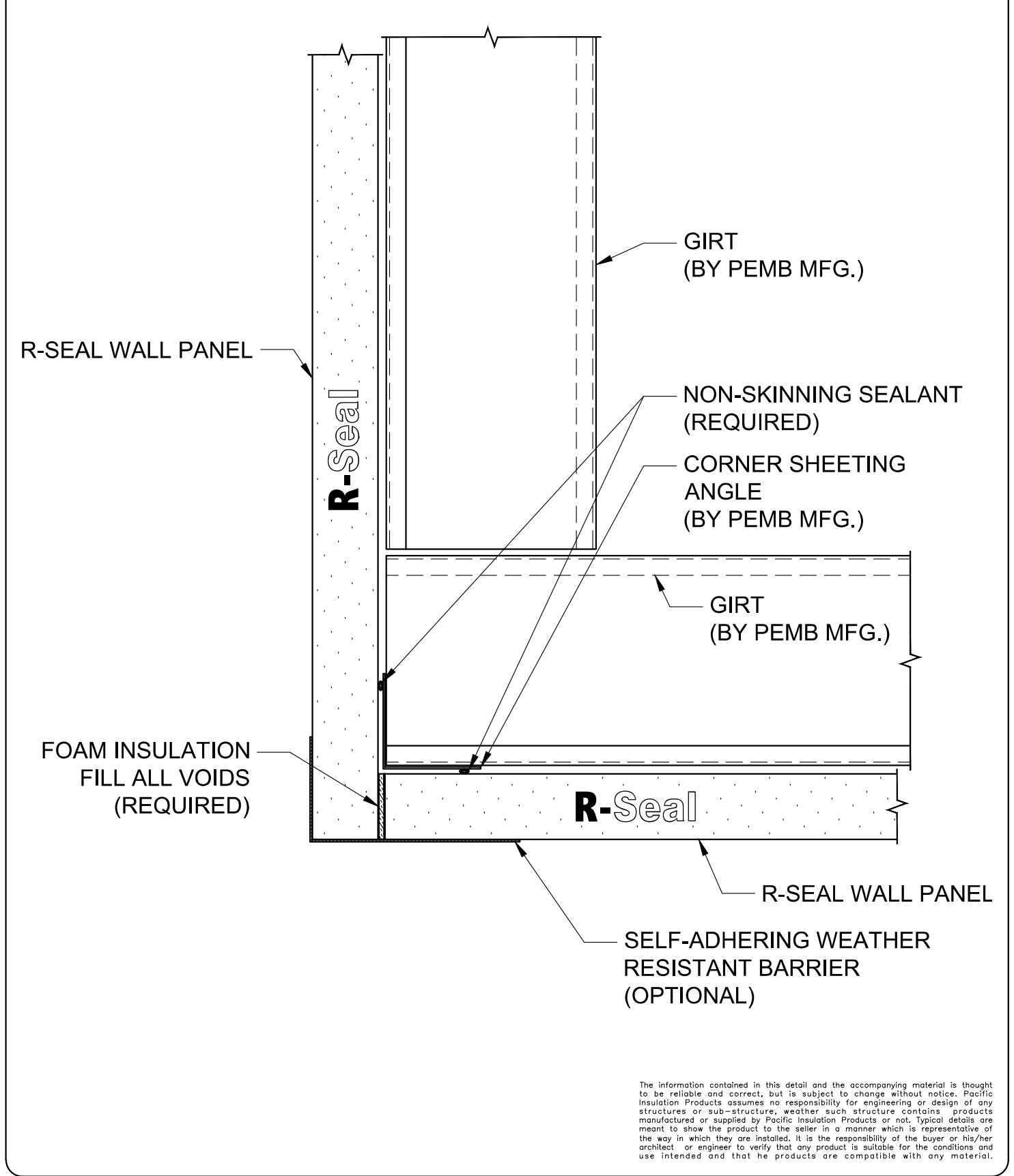
PO BOX #250


SULTAN, WA 98294

877-300-3794

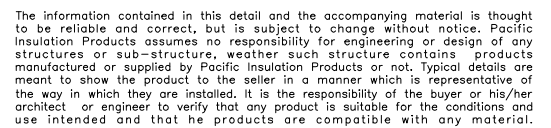
SALES@R-SEAL.COM

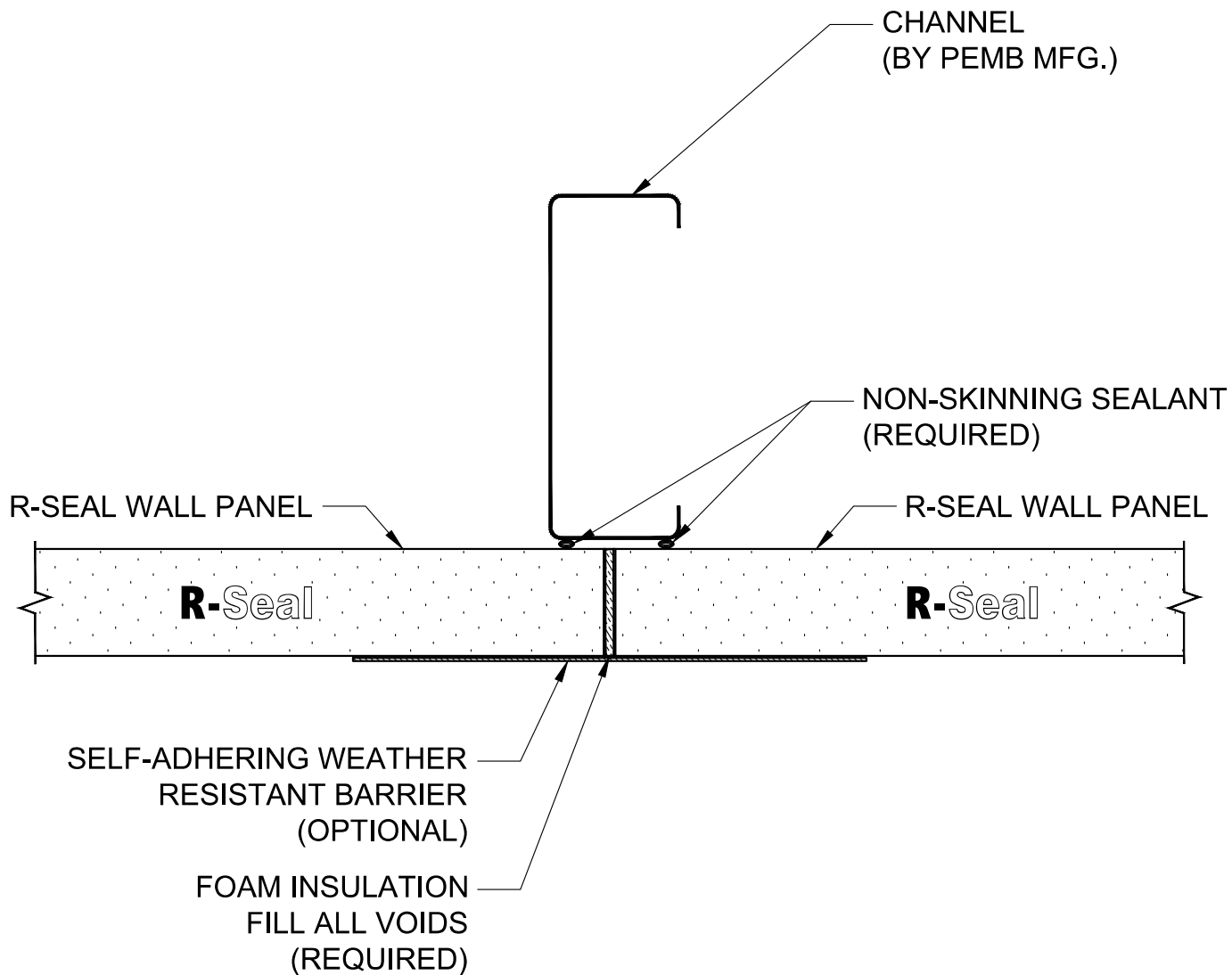
PAGE: 1 OF 1




ISSUE:	DWN:	CHK:	ENG:	MFG:	DATE:	R-SEAL MBI OUTSIDE CORNER DETAIL		 Simply Efficient	PO BOX #250 SULTAN, WA 98294  877-300-3794 SALES@R-SEAL.COM	PAGE: 1 OF 1
						STANDARD AIR BARRIER				

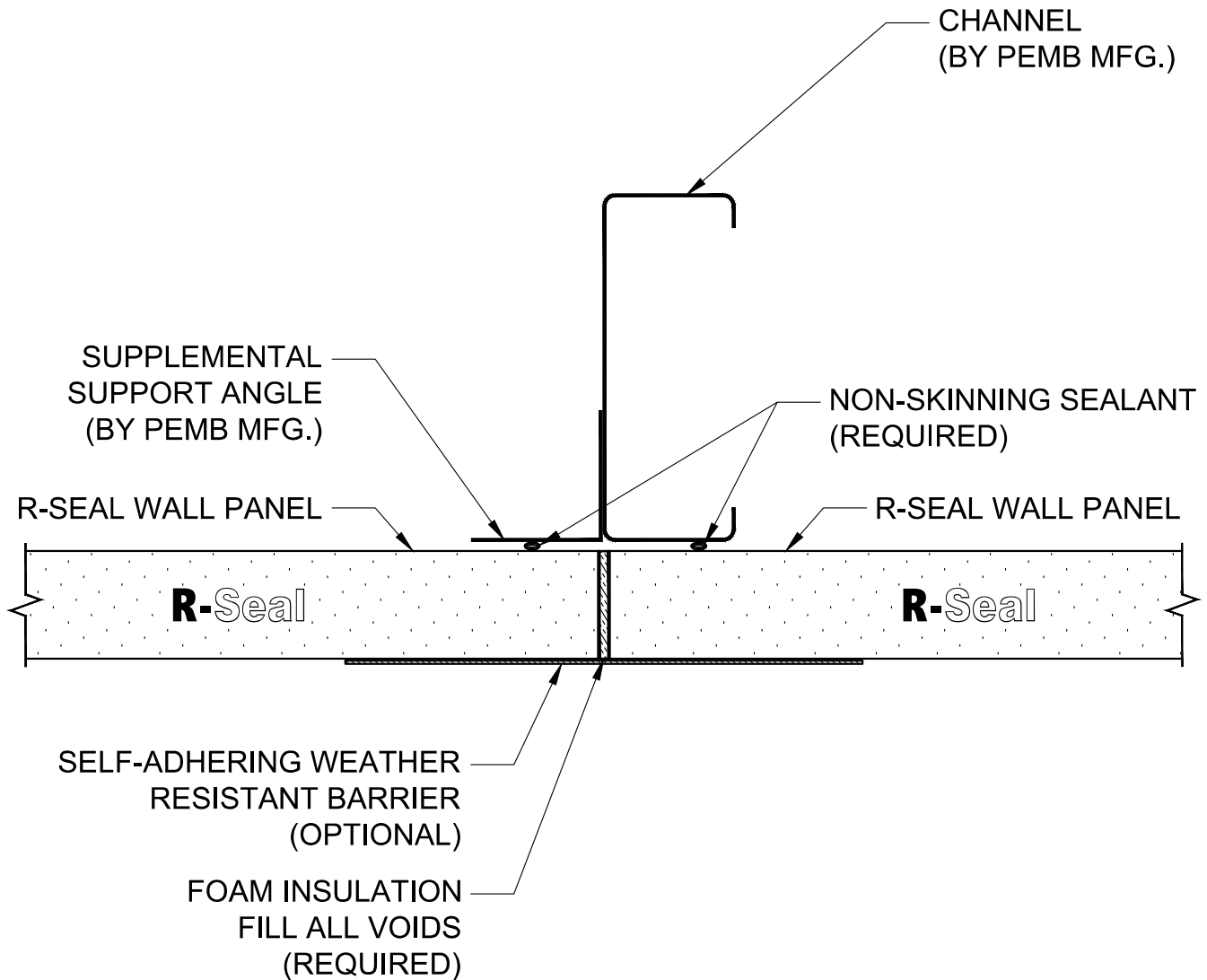






The information contained in this detail and the accompanying material is thought to be reliable and correct, but is subject to change without notice. Pacific Insulation Products assumes no responsibility for engineering or design of any structures or sub-structure, weather such structure contains products manufactured or supplied by Pacific Insulation Products or not. Typical details are meant to show the product to the seller in a manner which is representative of the way in which they are installed. It is the responsibility of the buyer or his/her architect or engineer to verify that any product is suitable for the conditions and use intended and that the products are compatible with any material.

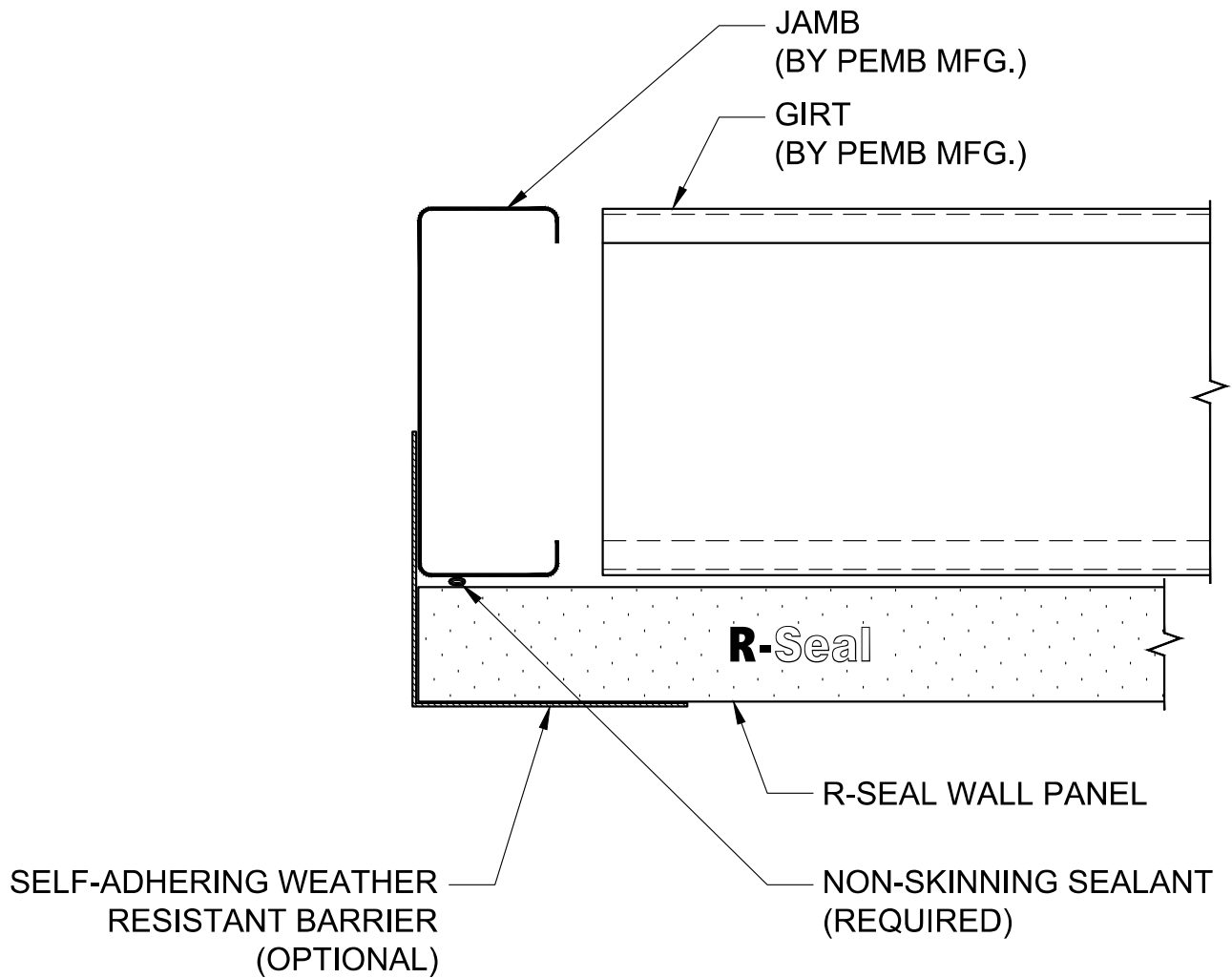
ISSUE:	DWN:	CHK:	ENG:	MFG:	DATE:	R-SEAL MBI WALL LAP DETAIL		 <b>Simply Efficient</b> PO BOX #250 SULTAN, WA 98294 877-300-3794 SALES@R-SEAL.COM	PAGE: 1 OF 1
						STANDARD AIR BARRIER			




The information contained in this detail and the accompanying material is thought to be reliable and correct, but is subject to change without notice. Pacific Insulation Products assumes no responsibility for engineering or design of any structures or sub-structure, weather such structure contains products manufactured or supplied by Pacific Insulation Products or not. Typical details are meant to show the product to the seller in a manner which is representative of the way in which they are installed. It is the responsibility of the buyer or his/her architect or engineer to verify that any product is suitable for the conditions and use intended and that the products are compatible with any material.

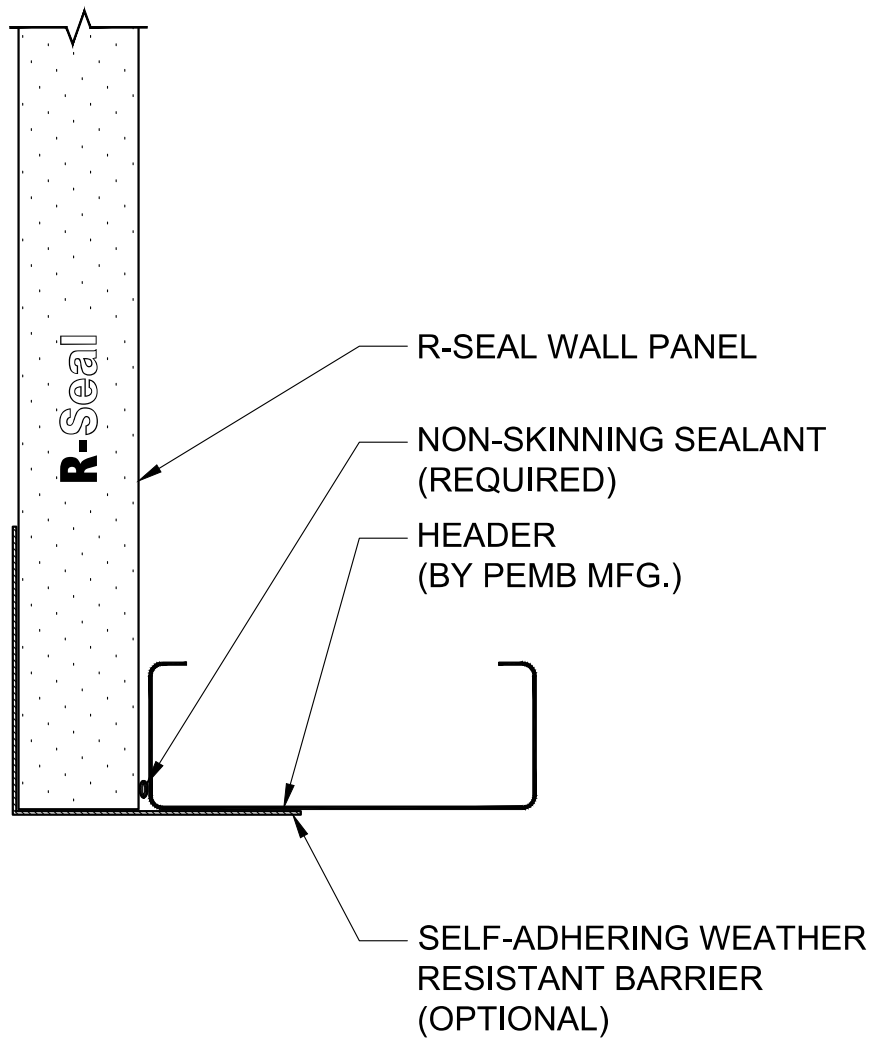
ISSUE:	DWN:	CHK:	ENG:	MFG:	DATE:	<div><div>R-SEAL</div><div>MBI HORIZONTAL WALL SUPPORT ANGLE DETAIL</div></div>	<div><div><div>R-SEAL</div><div>Simply Efficient</div></div><div><div>PO BOX #250 SULTAN, WA 98294</div><div>877-300-3794 SALES@R-SEAL.COM</div></div></div>
						STANDARD AIR BARRIER	

PAGE: 1 OF 1




The information contained in this detail and the accompanying material is thought to be reliable and correct, but is subject to change without notice. Pacific Insulation Products assumes no responsibility for engineering or design of any structures or sub-structure, weather such structure contains products manufactured or supplied by Pacific Insulation Products or not. Typical details are meant to show the product to the seller in a manner which is representative of the way in which they are installed. It is the responsibility of the buyer or his/her architect or engineer to verify that any product is suitable for the conditions and use intended and that the products are compatible with any material.

ISSUE:	DWN:	CHK:	ENG:	MFG:	DATE:	R-SEAL MBI JAMB DETAIL		 <b>Simply Efficient</b> PO BOX #250 SULTAN, WA 98294 877-300-3794 SALES@R-SEAL.COM	PAGE: 1 OF 1
						STANDARD AIR BARRIER			



The information contained in this detail and the accompanying material is thought to be reliable and correct, but is subject to change without notice. Pacific Insulation Products assumes no responsibility for engineering or design of any structures or sub-structure, weather such structure contains products manufactured or supplied by Pacific Insulation Products or not. Typical details are meant to show the product to the seller in a manner which is representative of the way in which they are installed. It is the responsibility of the buyer or his/her architect or engineer to verify that any product is suitable for the conditions and use intended and that the products are compatible with any material.

ISSUE:	DWN:	CHK:	ENG:	MFG:	DATE:	<i>R-SEAL</i> <i>MBI HEADER DETAIL</i>	<div> <b>Simply Efficient</b></div> <div><i>PO BOX #250</i> <i>SULTAN, WA 98294</i>  <i>877-300-3794</i> <i>SALES@R-SEAL.COM</i></div>	PAGE: 1 OF 1
						<i>STANDARD AIR BARRIER</i>		