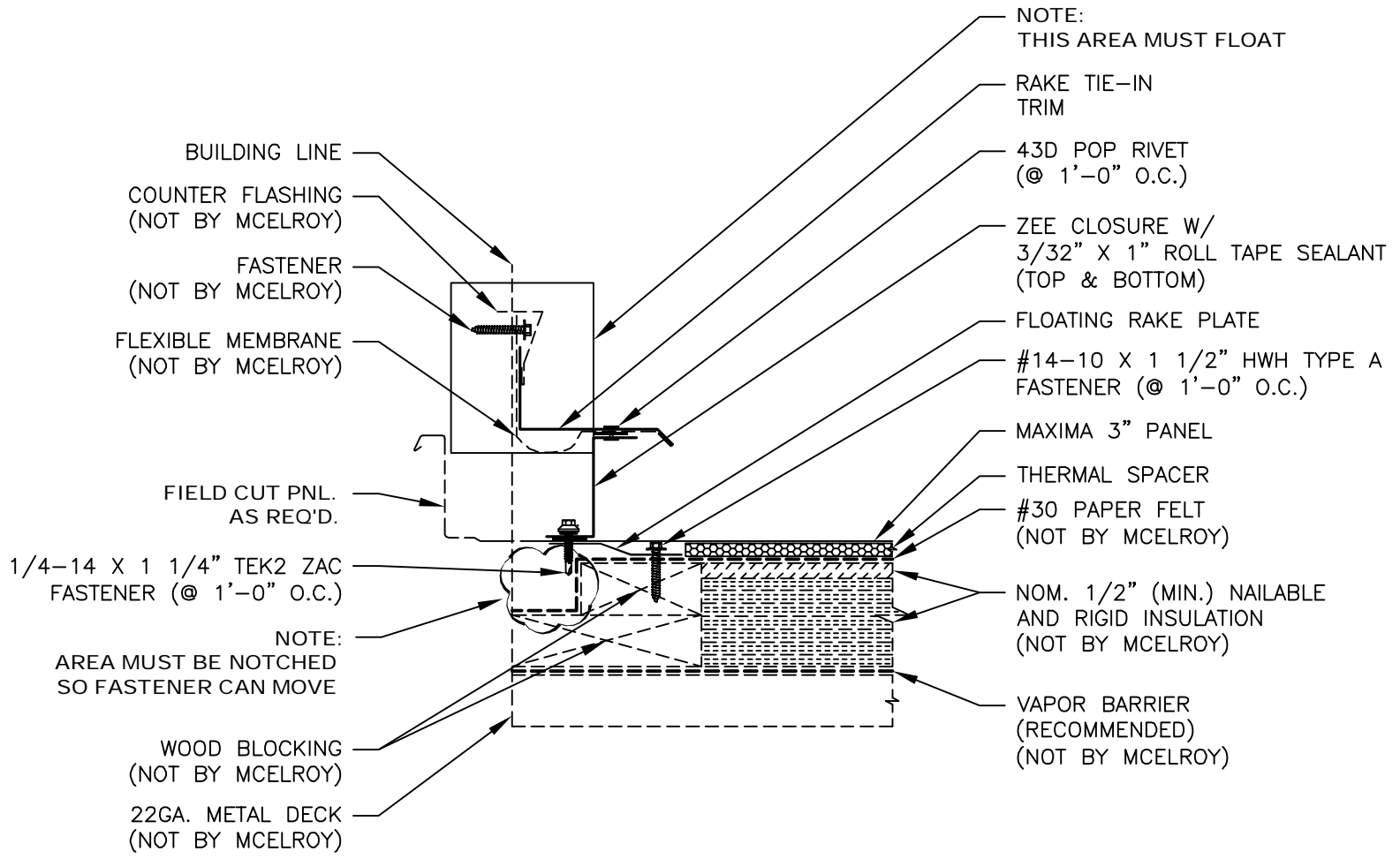


RAKE TIE-IN DETAIL (OFF MODULE)



NOTE:  
THIS AREA MUST FLOAT

RAKE TIE-IN  
TRIM

43D POP RIVET  
(@ 1'-0" O.C.)

ZEE CLOSURE W/  
3/32" X 1" ROLL TAPE SEALANT  
(TOP & BOTTOM)

FLOATING RAKE PLATE

#14-10 X 1 1/2" HWH TYPE A  
FASTENER (@ 1'-0" O.C.)

MAXIMA 3" PANEL

THERMAL SPACER

#30 PAPER FELT  
(NOT BY MCELROY)

NOM. 1/2" (MIN.) NAILABLE  
AND RIGID INSULATION  
(NOT BY MCELROY)

VAPOR BARRIER  
(RECOMMENDED)  
(NOT BY MCELROY)

NOTE:  
AREA MUST BE NOTCHED  
SO FASTENER CAN MOVE

WOOD BLOCKING  
(NOT BY MCELROY)

22GA. METAL DECK  
(NOT BY MCELROY)