



Construction No. 268 TGKX.268 Roof Deck Constructions

[Page Bottom](#)

Design/System/Construction/Assembly Usage Disclaimer

- Authorities Having Jurisdiction should be consulted in all cases as to the particular requirements covering the installation and use of UL Certified products, equipment, system, devices, and materials.
 - Authorities Having Jurisdiction should be consulted before construction.
 - Fire resistance assemblies and products are developed by the design submitter and have been investigated by UL for compliance with applicable requirements. The published information cannot always address every construction nuance encountered in the field.
 - When field issues arise, it is recommended the first contact for assistance be the technical service staff provided by the product manufacturer noted for the design. Users of fire resistance assemblies are advised to consult the general Guide Information for each product category and each group of assemblies. The Guide Information includes specifics concerning alternate materials and alternate methods of construction.
 - Only products which bear UL's Mark are considered Certified.
-

Roof Deck Constructions

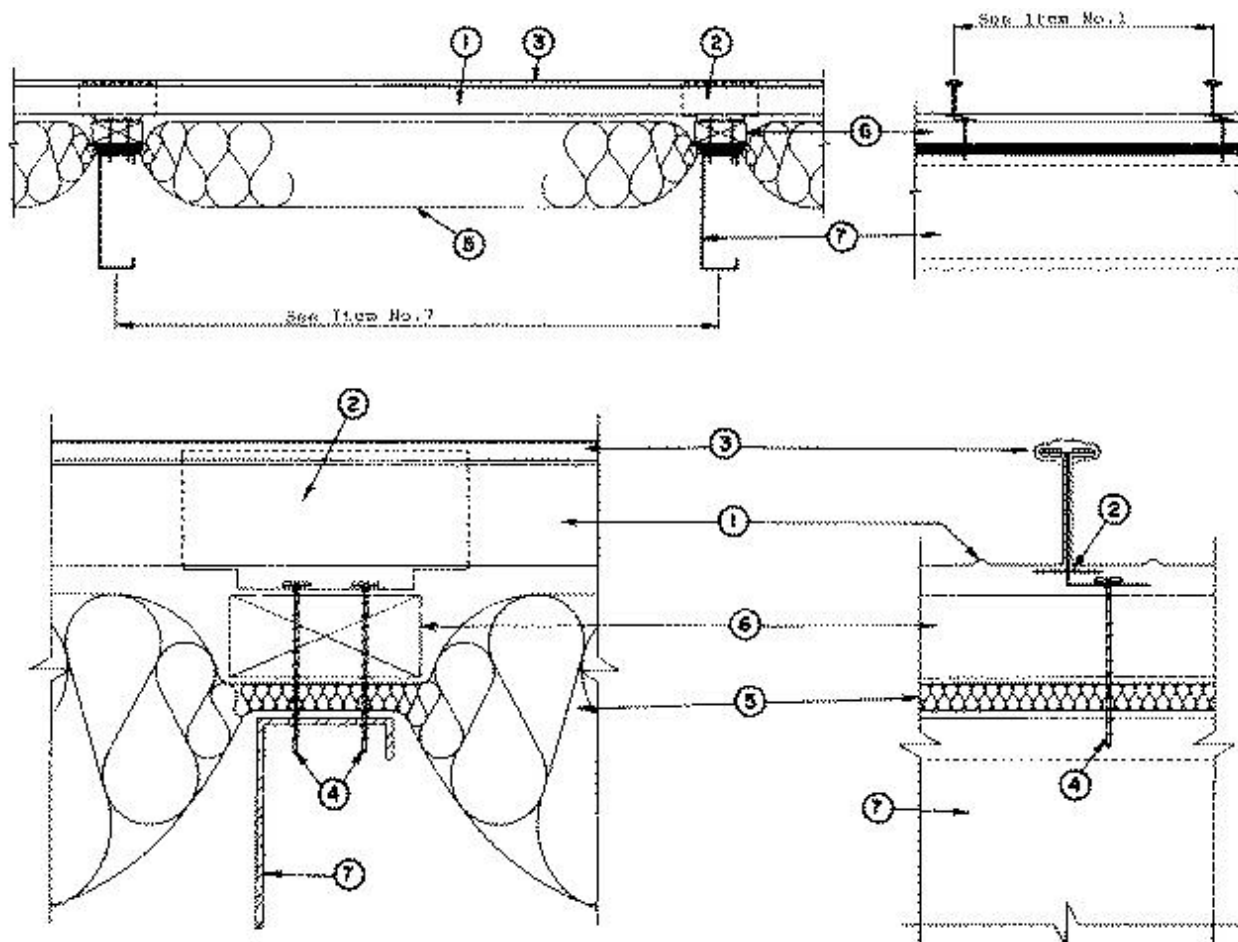
[See General Information for Roof Deck Constructions](#)

Construction No. 268

July 15, 2013

Wind Uplift – Class 90 (See Item No. 7)

Fire Not Investigated



1. **Metal Roof Deck Panels*** — Min No. 24 MSG gauge coated steel or stainless steel or min .030 in. thick aluminum; nom 18 in. wide, 2-3/8 in. high standing seams. Panels continuous over two or more spans. Floating end laps to occur over purlins with panels overlapped 8 in. End lap to begin 3 in. from purlin web and to extend across purlin flange. A bead of mastic sealant may be used at panel end and side laps.

INNOVATIVE METALS CO INC, DBA IMETCO ([View Classification](#)) — " Series 300 Standard Seam" .

MCELROY METAL MILL INC ([View Classification](#)) — "ABC 238T Roof Panel"

METAL SALES MANUFACTURING CORPORATION ([View Classification](#)) — "T-Armor Roof Panel"

THE GARLAND CO ([View Classification](#)) — " R-MER Span"

TREMCO INC ([View Classification](#)) — "TremLock T-238"

2. **Panel Clips*** — No. 16 MSG min gauge coated steel or stainless steel, 5-3/8 in. long by 2-5/8 in. high. Base to have two or three 1/4 in. diam guide holes to accommodate screw fasteners (Item 4).

INNOVATIVE METALS CO INC, DBA IMETCO ([View Classification](#)) — " 301016SS or 301016GS Clips" .

2A. **Panel Clips*** — (Not Shown) - No. 16 MSG min gauge coated steel or stainless steel, 6 in. long by 2.718 in. high. Base to have two or four .281 in. dia. guide holes to accommodate screw fasteners (Item 4).

MCELROY METAL MILL INC ([View Classification](#)) — "ABC 238T Roof Clip"

METAL SALES MANUFACTURING CORPORATION ([View Classification](#)) — "T-Armor Roof Clip"

3. **Cap** — Used at seam, nom 1 in. wide, 1/2 in. deep fabricated from min No. 24 MSG gauge steel, stainless

steel or .030 in. thick aluminum. Cap continuously seamed over panel seams using an electric seaming tool. Seaming process to include panel clips (Item 2).

4. **Fasteners** — (Screws) — Fasteners used to attach panel clips to purlin to be No. 14 by 3 in. long self-tapping, hex-head, plated or stainless steel screws without washers or 1/4 - 14 hex head driller without washer. Two fasteners per clip to be used. Fasteners used to attach thermal spacer (Item 6) to purlins to be same type, spaced 18 in. OC. Fastener used at end lap to be an expanding bolt type with an aluminum sleeve having a 5/8 in. diam cap with a 1/4 - 20 by 1-7/16 in. long stainless steel bolt. Spacing at end lap to be 1, 3, 3, 4, 3, 3, in. pattern.

5. **Insulation** — (Optional) — Any compressible blanket insulation, 6 in. max thickness before compression, or foamed plastic (rigid insulation) supplied in min thickness 1 in., max thickness 4 in.

6. **Thermal Spacer** — (Optional) — Located over insulation at purlin locations. Nom wood 2 in. by 4 in. or polystyrene, 1 in. thick, 3 in. wide, continuous over purlins when blanket insulation exceeds 4 in. max thickness before compression.

7. **Purlins** — No. 16 MSG min steel (50,000 psi min yield strength).

Spacing	60 in. OC for steel panels - Class 90.
	48 in. OC for aluminum panels - Class 90.

8. **Lateral Bracing** — (Not Shown) — As required.

*Bearing the UL Classification Mark

Last Updated on 2013-07-15

[Questions?](#)

[Print this page](#)

[Terms of Use](#)

[Page Top](#)

© 2013 UL LLC

When the UL Leaf Mark is on the product, or when the word "Environment" is included in the UL Mark, please search the [UL Environment database](#) for additional information regarding this product's certification.

The appearance of a company's name or product in this database does not in itself assure that products so identified have been manufactured under UL's Follow-Up Service. Only those products bearing the UL Mark should be considered to be Certified and covered under UL's Follow-Up Service. Always look for the Mark on the product.

UL permits the reproduction of the material contained in the Online Certification Directory subject to the following conditions: 1. The Guide Information, Assemblies, Constructions, Designs, Systems, and/or Certifications (files) must be presented in their entirety and in a non-misleading manner, without any manipulation of the data (or drawings). 2. The statement "Reprinted from the Online Certifications Directory with permission from UL" must appear adjacent to the extracted material. In addition, the reprinted material must include a copyright notice in the following format: "© 2013 UL LLC".