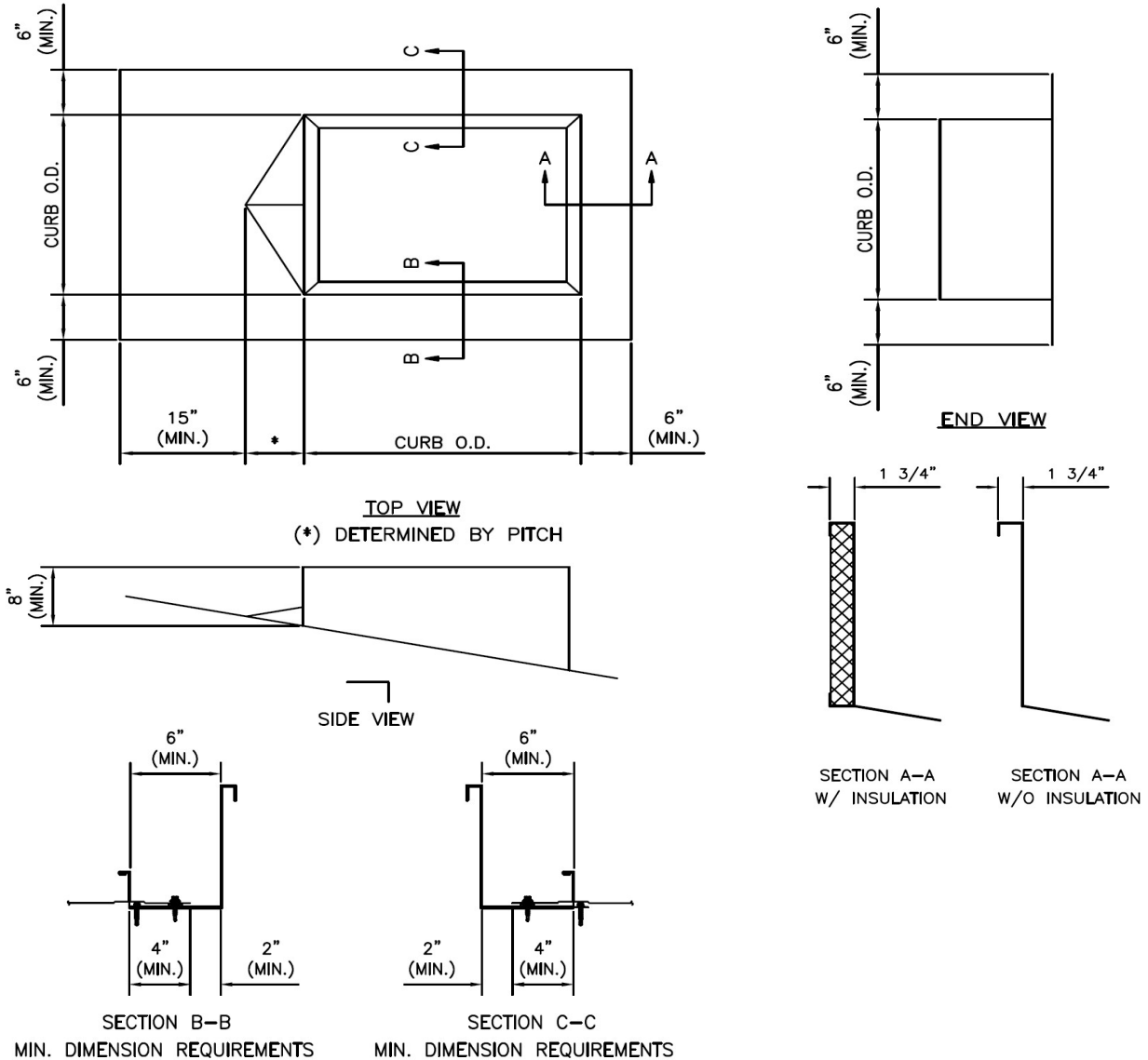


TECHNICAL BULLETIN

Issue Date : August 15, 2023

No. 99-418-23

Curb Requirements for Weathertightness Warranties



Notes:

The upper flange of the curb should have a diverter. The distance from the uppermost part of the diverter to the end of the panel should be 12" (min) and the distance of the curb flange to the end of the panel should be 3" (min) from the uppermost part of the diverter.

If the curb is sitting in four (4) panels or less, the clearance from the curb wall to the panel seam (rib) should be 6" (min). For every panel above four (4), 1" must be added to the minimum clearance. The minimum distance from panel edge to the curb wall is 1". The minimum distance from panel edge to the curb flange is 2". (See Detail AA) The lower flange should be 6" (min) and needs to lap over the roof panels 3" (min). ***Clips cannot attach through the curb flanges***

All of these dimensions should be determined taking into account the unit being used and the substrate under it.

**CORPORATE OFFICE
SHREVEPORT, LOUISIANA**