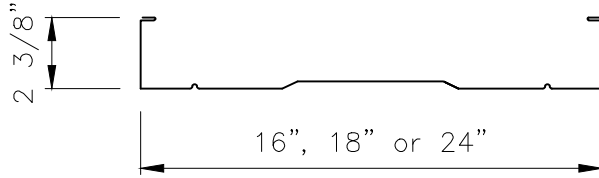
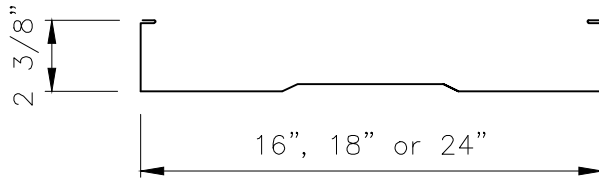


## 238T Symmetrical Panel

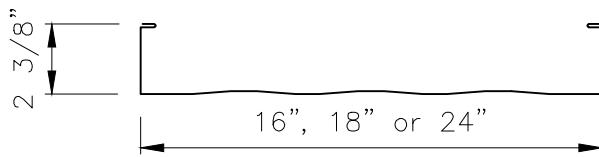
## Product Data



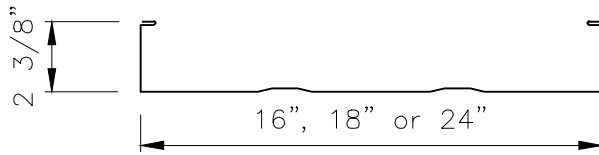
**PLANK & PENCIL PROFILE (Standard)**



**PLANK PROFILE**



**STRIATED PROFILE**



**MINOR RIB PROFILE**



**FLAT PROFILE**

### Applications

Symmetrical roof/wall panel used on slopes down to 1/2:12. (1/4:12 slope considered with prior approval) Continuous length up to 200'. Tapered panels and convex curving available – 24ft radius minimum.

### Substrates

Bar Joist, Open Purlin, Solid Wood Decking, Metal Deck, Re-Roof over existing Modified, Built-up, Single-ply or Metal.

### Material

Standard – 24 GA. ASTM A792 (50 ksi)  
Optional – 22 GA. ASTM A792 (50 ksi)  
.032 and .040 Aluminum ASTM B209 3003  
and 20 oz. Copper ASTM B370

### Manufacturing

Roll formed in factory or at jobsite. Curved at jobsite. (24" panels formed on-site only)

### Finishes

Acrylic Coated Galvalume®  
Fluoropolymer (Kynar 500® PVDF resin-based)

### Panel Conditions

Plank & Pencil Rib, Plank, Striated, Minor Ribs and Flat  
(Oil canning is inherent in all metal panels and is not cause for panel rejection. A signed oil canning acknowledgement will be required for all orders prior to production.)

### Testing/Agency Approvals \*

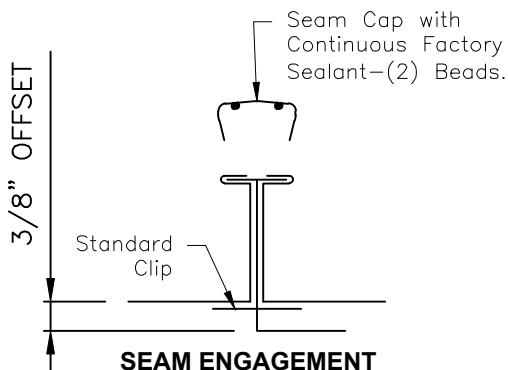
Uplift: FM 4471 Class 1–75, Class 1–195  
UL 580 Class 90  
ASTM E1592  
Static Water: FM 4471 Appendix G, ASTM E2140  
Air & Water Infiltration: ASTM E1680, ASTM E1646  
Impact Resistance: UL Class 4, FM Class 1–SH  
Fire Rating: UL Class A  
Texas Windstorm: RC–270  
Florida Building Code: 16606.1, 16606.2, 16606.3  
Miami Dade Approval

\*Testing and Approvals are product specific. Please inquire for details.\*

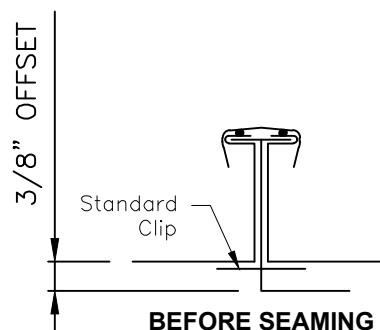
### NOTE:

All data represented on this sheet may not be applicable to all widths and gauges. Please contact McElroy Metal for more information.

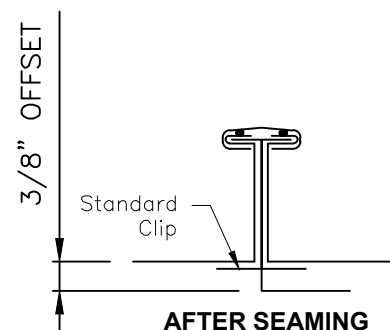
\*Requires Mechanical Seamer and Hand Seamer to finish seam cap.\*



**SEAM ENGAGEMENT**



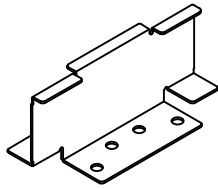
**BEFORE SEAMING**



**AFTER SEAMING**

## 238T Symmetrical Panel (Continued)

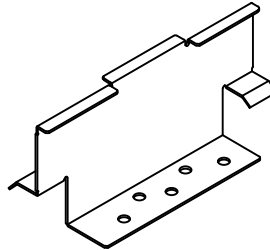
## Product Data



### **STANDARD CLIP**

16 GA.

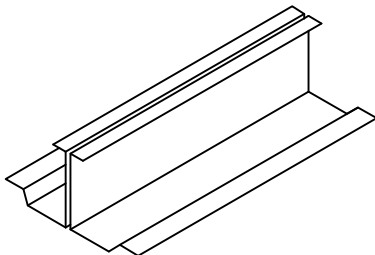
Standard: Galvanized G90 - ASTM A653 (50 ksi)  
Optional: Stainless 304SS - ASTM A240 (50 ksi)



### **RETROFIT CLIP**

16 GA.

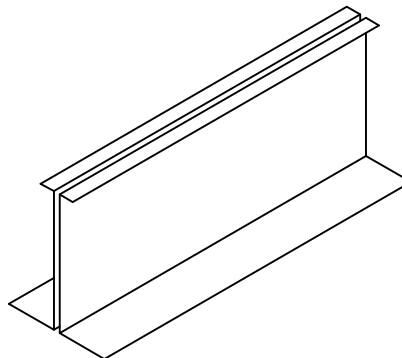
Standard: Galvanized G90 - ASTM A653 (50 ksi)  
Optional: Stainless 304SS - ASTM A240 (50 ksi)



### **MULTI-SPAN CLIP**

2-Piece

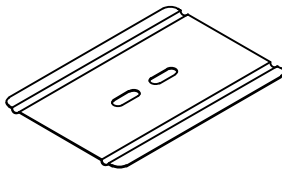
Standard: 24 GA. - ASTM A792 (50 ksi)  
Optional: 22 GA. - ASTM A792 (50 ksi)  
\*Typically sold in 10' lengths\*



### **TALL MULTI-SPAN CLIP**

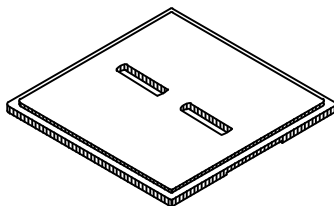
2-Piece

Standard: 24 GA. - ASTM A792 (50 ksi)  
Optional: 22 GA. - ASTM A792 (50 ksi)  
\*Typically sold in 10' lengths\*



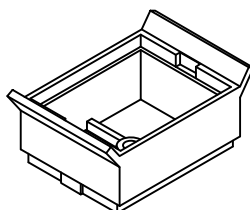
### **BEARING PLATE**

24 GA. - ASTM A792 (50ksi)



### **STACKABLE LEVELING SHIM**

6" x 6" x 1/4" Thick

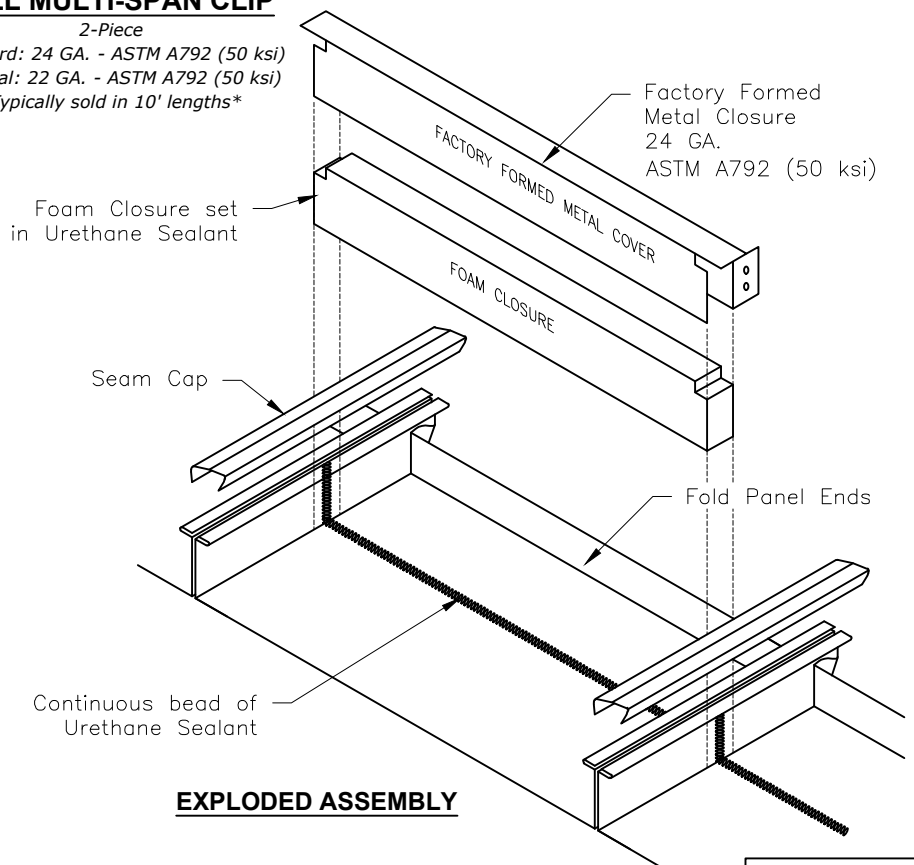


### **1 3/8" PEDESTAL**

\*For use with Multi-Span Clip Only\*  
20% Glass-Filled Polycarbonate Black

#### **NOTE:**

All data represented on this sheet may not be applicable to all widths and gauges. Please contact McElroy Metal for more information.



### **EXPLODED ASSEMBLY**