

TECHNICAL BULLETIN

Issue Date: April 27, 2020

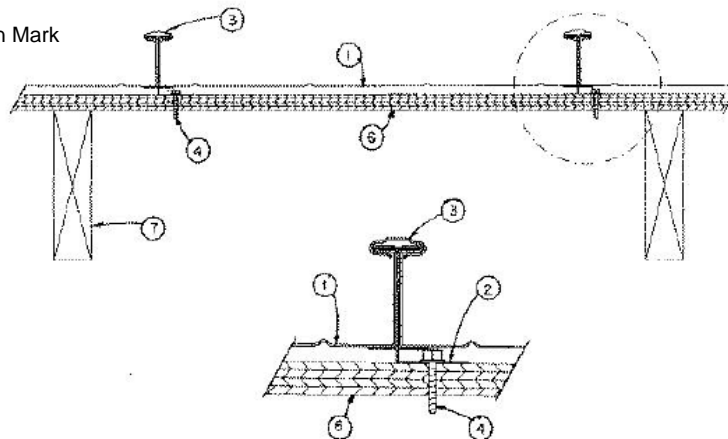
No. 03-369-20

UL Construction #268B 238T UL 580 Class 90 Wind Uplift

1. **Metal Roof Deck Panels*** - Min No. 24 MSG gauge steel or stainless steel or 0.030 in. thick aluminum, nom 18 in. wide, 2-3/8 in. high standing seams. Heavier gauges or narrower panels acceptable. Panels continuous over three or more clips with no end laps.
 McElroy Metal Mill, Inc. "ABC 238T Roof Panel"
- 2A. **Panel Clips*** — (Not Shown) - No. 16 MSG min gauge coated steel or stainless steel, 6 in. long by 2.718 in. high. Base to have two or four .281 in. dia. guide holes to accommodate screw fasteners (Item 4).
 McElroy Metal Mill, Inc. "ABC 238T Roof Clip"
3. **Cap** — Used at seam, nom 1 in. wide, 1/2 in. deep fabricated from min No. 24 MSG steel, stainless steel or .030 in. thick aluminum. Cap continuously seamed over panel seams with a special motorized seaming tool. Seaming process to include panel clips (Item 2).
4. **Fasteners** — (Screws) — Fasteners used to attach panel clips to plywood deck to be No. 14 by 1 in. long type A point, plated or stainless steel screws without washers or No. 12-11 Low profile, No.3 Square drive wood screw. Two fasteners per clip to be used.
5. **Underlayment** — (Optional) — (Not Shown) Underlayment used over plywood deck to be Type 15 or 30 organic felt. Sides overlapped min 2 in., end laps per manufacturer's instructions. Felt nailed to plywood deck with 1-1/4 in. long steel cap nails, located per manufacturer's instructions. Nail spacing to be max 12 in. OC at the side lap and max 24 in. OC in interior rows.
As An Alternate — A self-adhering modified bitumen water proofing membrane may be used, installed per manufacturer's instructions. Note — when alternate is used the plywood joints need not be sealed.
6. **Plywood Decking** — Plywood decking to be graded per PS83 specifications, 19/32 in. thick, exposure 1, APA Rated Sheathing (42/20) square edged. Butt ends not blocked. All butt and side joints to be sealed against leakage by using tape and/or caulk. (Note exception under Item 5, Alternate).
7. **Supports** — Spaced max of 24 in. OC. Any of the following types may be used to support the plywood decking:
 - a. Nom 2 by 6 in., No. 2 grade or better S-P-F, Hemlock Fir, Douglas Fir or Southern Yellow Pine or equivalent.
 - b. Wood trusses with a nom 2 by 4 in. upper chord of the same grade as item a.
 - c. No. 22 MSG min cold formed coated steel (min yield to be 3,000 psi).
8. **Plywood Fasteners** — (Not Shown) Fasteners used to attach the plywood deck to the supports to be as follows:
 - a. For plywood-to-wood supports No. 8-18 by 1-7/8 in. long bugle-head steel screws with a No. 2 Phillips drive, a "Hi-Low" thread pattern and an "S-Point" .
 - b. As an alternate to Item a, 8d common nails may be used.
 - c. For plywood-to-steel supports for a steel thickness less than No. 20 MSG No. 7-19 by 1-1/4 in. long bugle-head steel screws with a No. 2 Phillips drive, a "Hi-Low" thread pattern and an "S-Point" . For a steel thickness greater than No. 20 MSG to No. 16 MSG, No. 6-20 by 1-1/4 in. long bugle-head steel screws with a No. 2 Phillips drive and a S12 (TEKS/3)supR point.
 Spacing: Fastener spacing for all fastener types to be 6 in. OC at the plywood edges and 12 in. OC in the interior.

Refer to General Information, Roof Deck Construction (Roofing Materials and Systems Directory) for items not evaluated.

*Bearing the UL Classification Mark



MANUFACTURING LOCATIONS

ADELANTO, CA	ASHBURN, GA	BOSSIER CITY, LA	CLINTON, IL	DIAMOND, MO	HOUSTON, TX	LEWISPORT, KY
MARSHALL, MI	MAUSTON, WI	MERKEL, TX	PEACHTREE CITY, GA	SUNNYVALE, TX	WINCHESTER, VA	